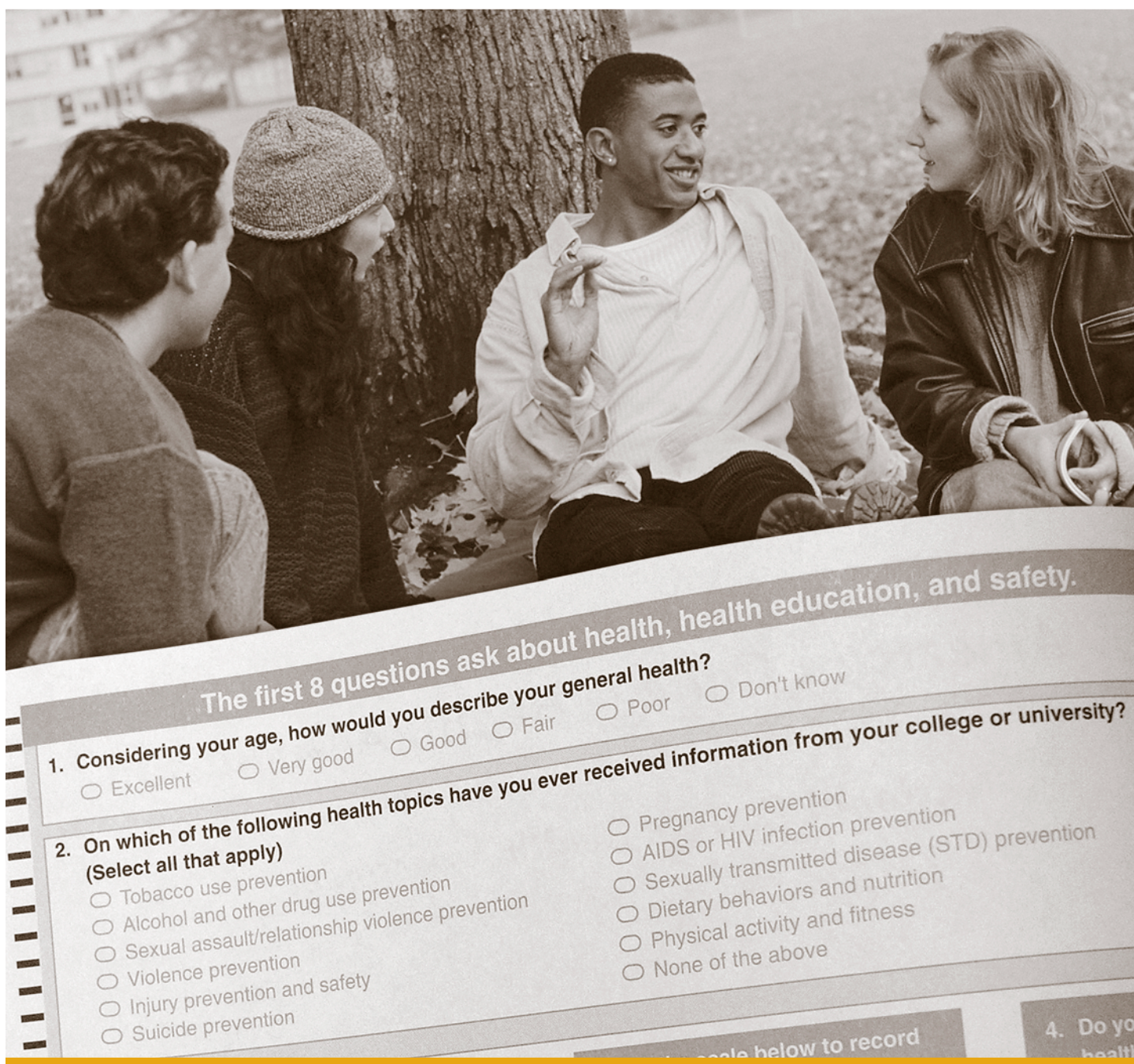




American College Health Association **National College Health Assessment**

Reference Group Data Report



Fall 2007



American College Health Association



Reference Group Data Report

Fall 2007

The ACHA-NCHA supports the health of the campus community by fulfilling the academic mission, supporting short- and long-term healthy behaviors, and gaining a current profile of health trends within the campus community.

Suggested citation for this document: American College Health Association. American College Health Association-National College Health Assessment: Reference Group Data Report Fall 2007. Baltimore: American College Health Association; 2008.

Demographics of Participating Colleges/Universities

Forty-eight postsecondary institutions self-selected to participate in the Fall 2007 ACHA National College Health Assessment and 23,044 surveys were completed by students on these campuses. For the purpose of forming the Reference Group, only those institutions that surveyed all students, or used a random sampling technique are included in the analysis, yielding a final data set consisting of 20,507 students and 39 schools. Demographic characteristics of the 39 campuses follow:

Demographical Characteristics of the 39 Postsecondary Institutions Included in the Fall 2007 ACHA-NCHA Reference Group.	
Campus Characteristic	<i>n</i>
Type of Institution	
Public	22
Private	17
2-year	2
4-year	37
Location of Campus	
Northeast (CT, ME, MA, NH, NJ, NY, PA, RI, VT)	13
Midwest (IL, IN, IA, KS, MI, MN, MO, NE, ND, OH, SD, WI)	6
South (AL, AR, DE, DC, FL, GA, KY, LA, MD, MS, NC, OK, SC, TN, TX, VA, WV)	9
West (AK, AZ, CA, CO, HI, ID, MT, NV, NM, OR, UT, WA, WY)	10
Outside US	1
Campus Size	
< 2,500 students	9
2,500 – 4,999 students	6
5,000 – 9,999 students	6
10,000 – 19,999 students	13
20,000 students or more	5
Campus Setting	
Very large city (population over 500,000)	5
Large city (population 250,000-499,999)	4
Small city (population 50,000-249,999)	9
Large town (population 10,000 – 49,999)	15
Small town (population 2,500-9,999)	5
Rural community (population under 2,500)	1
Carnegie Classification	
Associates Colleges	3
Baccalaureate Colleges	10
Masters Colleges and Universities	12
Research Institutions	12
Special Focus Institutions	1
Miscellaneous/Not Classified	1

Demographical Characteristics of the 39 Postsecondary Institutions Included in the Fall 2007 ACHA-NCHA Reference Group.	
Campus Characteristic	<i>n</i>
ACHA Membership Status	
Institutional Member	34
Nonmember	5
Religious Affiliation	
No	33
Yes	6
<u>If yes:</u>	
Catholic	4
Protestant or Other Christian	2
Postsecondary Minority Institution (US Department of Education)	
No	38
Yes	1
<u>*If yes:</u>	
Postsecondary Minority Institution	0
Historically Black College or University (HBCU)	0
High Hispanic Enrollment	1
Hispanic Serving Institution (HSI)	0
Indian Tribally Controlled College or University	0
Alaska Native-Serving Institution	0
Native Hawaiian-Serving Institution	0
*institutions may hold more than one type of minority status	

	All Spring 2007 Institutions	Paper Survey Administration	Web Survey Administration
Number of institutions	39	9	30
Number of students	30,507	3,947	16,560
Mean response proportion	31%	63%	21%
Median response proportion	25%	82%	21%



American College Health Association-National College Health Assessment (ACHA-NCHA) Reference Group Data Report - Fall 2007

American College Health Association
P.O. Box 28937
Baltimore, MD 21240-8937
(410) 859-1500
www.acha.org

03/19/08

FREQUENCY REPORT

Number of Surveys (n) = 20,507 Paper & Web Surveys

1. Considering your age, how would you describe your general health?

	Male		Female		Unknown		Total		
	Freq.	Pct.	Freq.	Pct.	Freq.	Pct.	Freq.	Pct.	
1 Excellent	1,391	21	1,757	14	143	20	3,291	16.1	
2 Very good	2,808	42	5,435	42	261	36	8,504	41.6	
3 Good	1,907	28	4,376	34	220	30	6,503	31.8	
4 Fair	547	8	1,159	9	75	10	1,781	8.7	
5 Poor	78	1	190	2	11	2	279	1.4	
6 Don't know	23	0	34	0	14	2	71	0.3	
Valid responses =	6,754	33	12,951	63	724	4	20,429	99.6	

Invalid responses include no response or multiple responses.

2. On which of the following health topics have you ever received information from your college or university?

	Male		Female		Unknown		Total		
	Freq.	Pct.	Freq.	Pct.	Freq.	Pct.	Freq.	Pct.	
1 Tobacco use prevention	1,666	25	2,494	19	200	27	4,360	21.3	
2 Alcohol and other drug use	3,451	51	5,923	46	362	49	9,736	47.5	
3 Sexual assault/relationship	2,789	41	5,663	44	317	43	8,769	42.8	
4 Violence prevention	1,582	23	3,118	24	158	21	4,858	23.7	
5 Injury prevention and safety	1,155	17	1,941	15	108	15	3,204	15.6	
6 Suicide prevention	903	13	1,431	11	88	12	2,422	11.8	
7 Pregnancy prevention	1,162	17	2,368	18	156	21	3,686	18.0	
8 AIDS or HIV infection	1,586	23	2,462	19	192	26	4,240	20.7	
9 Sexually transmitted disease	1,977	29	3,392	26	216	29	5,585	27.2	
10 Dietary behaviors and nutrition	1,741	26	3,857	30	145	20	5,743	28.0	
11 Physical activity and fitness	2,375	35	4,874	38	204	28	7,453	36.3	
12 None of the above	1,934	29	3,588	28	194	26	5,716	27.9	

Valid responses = all responses and blanks: since multiple responses were possible, more than 100% may be included.

3A. Believability of each source of health information:

Leaflets, pamphlets, flyers

	Male		Female		Unknown		Total		
	Freq.	Pct.	Freq.	Pct.	Freq.	Pct.	Freq.	Pct.	
1 Believable	3,265	49	8,284	65	377	56	11,926	59.4	
2 Neither believable nor unbelievable	2,921	44	4,099	32	260	39	7,280	36.3	
3 Unbelievable	451	7	374	3	32	5	857	4.3	
Valid responses =	6,637	33	12,757	64	669	3	20,063	97.8	

Invalid responses include no response or multiple responses.

3B. Believability of each source of health information:

Campus newspaper articles

	Male		Female		Unknown		Total		
	Freq.	Pct.	Freq.	Pct.	Freq.	Pct.	Freq.	Pct.	
1 Believable	2,924	44	6,312	50	344	52	9,580	47.9	
2 Neither believable nor unbelievable	3,144	48	5,718	45	280	42	9,142	45.7	
3 Unbelievable	542	8	681	5	38	6	1,261	6.3	
Valid responses =	6,610	33	12,711	64	662	3	19,983	97.4	

Invalid responses include no response or multiple responses.

3C. Believability of each source of health information:

Health center medical staff

	Male		Female		Unknown		Total		
	Freq.	Pct.	Freq.	Pct.	Freq.	Pct.	Freq.	Pct.	
1 Believable	5,846	89	11,439	90	548	83	17,833	89.3	
2 Neither believable nor unbelievable	652	10	1,107	9	93	14	1,852	9.3	
3 Unbelievable	84	1	187	2	16	2	287	1.4	
Valid responses =	6,582	33	12,733	64	657	3	19,972	97.4	

Invalid responses include no response or multiple responses.



American College Health Association-National College Health Assessment (ACHA-NCHA) Reference Group Data Report - Fall 2007

American College Health Association
P.O. Box 28937
Baltimore, MD 21240-8937
(410) 859-1500
www.acha.org

03/19/08

FREQUENCY REPORT

Number of Surveys (n) = 20,507 Paper & Web Surveys

3D. Believability of each source of health information:**Health educators**

	Male		Female		Unknown		Total		
	Freq.	Pct.	Freq.	Pct.	Freq.	Pct.	Freq.	Pct.	
1 Believable	5,761	87	11,560	91	547	84	17,868	89.5	
2 Neither believable nor unbelievable	764	12	1,085	9	92	14	1,941	9.7	
3 Unbelievable	70	1	80	1	16	2	166	0.8	
Valid responses =	6,595	33	12,725	64	655	3	19,975	97.4	

Invalid responses include no response or multiple responses.

3E. Believability of each source of health information:**Friends**

	Male		Female		Unknown		Total		
	Freq.	Pct.	Freq.	Pct.	Freq.	Pct.	Freq.	Pct.	
1 Believable	1,522	23	3,032	24	184	28	4,738	23.7	
2 Neither believable nor unbelievable	4,375	66	8,558	67	404	61	13,337	66.6	
3 Unbelievable	714	11	1,154	9	70	11	1,938	9.7	
Valid responses =	6,611	33	12,744	64	658	3	20,013	97.6	

Invalid responses include no response or multiple responses.

3F. Believability of each source of health information:**Resident assistants/advisors**

	Male		Female		Unknown		Total		
	Freq.	Pct.	Freq.	Pct.	Freq.	Pct.	Freq.	Pct.	
1 Believable	2,249	34	4,823	38	256	40	7,328	36.9	
2 Neither believable nor unbelievable	3,796	58	7,172	57	344	53	11,312	56.9	
3 Unbelievable	526	8	672	5	44	7	1,242	6.2	
Valid responses =	6,571	33	12,667	64	644	3	19,882	97.0	

Invalid responses include no response or multiple responses.

3G. Believability of each source of health information:**Parents**

	Male		Female		Unknown		Total		
	Freq.	Pct.	Freq.	Pct.	Freq.	Pct.	Freq.	Pct.	
1 Believable	4,082	62	8,580	68	419	65	13,081	65.5	
2 Neither believable nor unbelievable	2,329	35	3,877	31	206	32	6,412	32.1	
3 Unbelievable	206	3	259	2	24	4	489	2.4	
Valid responses =	6,617	33	12,716	64	649	3	19,982	97.4	

Invalid responses include no response or multiple responses.

3H. Believability of each source of health information:**Religious Center**

	Male		Female		Unknown		Total		
	Freq.	Pct.	Freq.	Pct.	Freq.	Pct.	Freq.	Pct.	
1 Believable	1,770	27	3,583	28	189	29	5,542	27.8	
2 Neither believable nor unbelievable	3,090	47	6,528	51	323	50	9,941	49.8	
3 Unbelievable	1,746	26	2,591	20	135	21	4,472	22.4	
Valid responses =	6,606	33	12,702	64	647	3	19,955	97.3	

Invalid responses include no response or multiple responses.

3I. Believability of each source of health information:**Television**

	Male		Female		Unknown		Total		
	Freq.	Pct.	Freq.	Pct.	Freq.	Pct.	Freq.	Pct.	
1 Believable	935	14	1,826	14	140	21	2,901	14.5	
2 Neither believable nor unbelievable	4,057	61	8,100	64	373	57	12,530	62.5	
3 Unbelievable	1,643	25	2,835	22	144	22	4,622	23.0	
Valid responses =	6,635	33	12,761	64	657	3	20,053	97.8	

Invalid responses include no response or multiple responses.



**American College Health Association-National College Health Assessment (ACHA-NCHA)
Reference Group Data Report - Fall 2007**

American College Health Association
P.O. Box 28937
Baltimore, MD 21240-8937
(410) 859-1500
www.acha.org

03/19/08

FREQUENCY REPORT

Number of Surveys (n) = 20,507 Paper & Web Surveys

3J. Believability of each source of health information:

	Male		Female		Unknown		Total		
	Freq.	Pct.	Freq.	Pct.	Freq.	Pct.	Freq.	Pct.	
1 Believable	1,442	22	3,035	24	171	26	4,648	23.2	
2 Neither believable nor unbelievable	3,963	60	7,679	60	369	56	12,011	60.1	
3 Unbelievable	1,203	18	2,021	16	116	18	3,340	16.7	
Valid responses =	6,608	33	12,735	64	656	3	19,999	97.5	

Invalid responses include no response or multiple responses.

3K. Believability of each source of health information:

	Male		Female		Unknown		Total		
	Freq.	Pct.	Freq.	Pct.	Freq.	Pct.	Freq.	Pct.	
1 Believable	2,755	42	5,852	46	293	45	8,900	44.8	
2 Neither believable nor unbelievable	3,403	52	6,276	50	310	48	9,989	50.3	
3 Unbelievable	397	6	531	4	42	7	970	4.9	
Valid responses =	6,555	33	12,659	64	645	3	19,859	96.8	

Invalid responses include no response or multiple responses.

3L. Believability of each source of health information:

	Male		Female		Unknown		Total		
	Freq.	Pct.	Freq.	Pct.	Freq.	Pct.	Freq.	Pct.	
1 Believable	4,000	61	8,384	66	334	52	12,718	63.9	
2 Neither believable nor unbelievable	2,350	36	4,035	32	269	42	6,654	33.4	
3 Unbelievable	218	3	262	2	41	6	521	2.6	
Valid responses =	6,568	33	12,681	64	644	3	19,893	97.0	

Invalid responses include no response or multiple responses.

3M. Believability of each source of health information:

	Male		Female		Unknown		Total		
	Freq.	Pct.	Freq.	Pct.	Freq.	Pct.	Freq.	Pct.	
1 Believable	1,652	25	3,256	26	200	31	5,108	25.5	
2 Neither believable nor unbelievable	4,229	64	8,243	65	354	55	12,826	64.1	
3 Unbelievable	750	11	1,227	10	90	14	2,067	10.3	
Valid responses =	6,631	33	12,726	64	644	3	20,001	97.5	

Invalid responses include no response or multiple responses.

3N. Believability of each source of health information:

	Male		Female		Unknown		Total		
	Freq.	Pct.	Freq.	Pct.	Freq.	Pct.	Freq.	Pct.	
1 Believable	631	12	1,281	13	53	19	1,965	13.0	
2 Neither believable nor unbelievable	4,001	79	7,851	80	198	71	12,050	79.6	
3 Unbelievable	453	9	648	7	28	10	1,129	7.5	
Valid responses =	5,085	34	9,780	65	279	2	15,144	73.8	

Invalid responses include no response or multiple responses.

4A. Do you usually get health-related information from any of the following sources? Leaflets, pamphlets, flyers

	Male		Female		Unknown		Total		
	Freq.	Pct.	Freq.	Pct.	Freq.	Pct.	Freq.	Pct.	
1 No	3,790	58	5,284	41	277	44	9,351	46.8	
2 Yes	2,794	42	7,468	59	354	56	10,616	53.2	
Valid responses =	6,584	33	12,752	64	631	3	19,967	97.4	

Invalid responses include no response or multiple responses.



American College Health Association-National College Health Assessment (ACHA-NCHA) Reference Group Data Report - Fall 2007

American College Health Association

P.O. Box 28937

Baltimore, MD 21240-8937

(410) 859-1500

www.acha.org

03/19/08

FREQUENCY REPORT

Number of Surveys (n) = 20,507 Paper & Web Surveys

4B. Do you usually get health-related information from any of the following sources? Campus newspaper articles

	Male		Female		Unknown		Total		
	Freq.	Pct.	Freq.	Pct.	Freq.	Pct.	Freq.	Pct.	
1 No	4,686	71	9,053	71	396	64	14,135	71.1	
2 Yes	1,879	29	3,629	29	225	36	5,733	28.9	
Valid responses =	6,565	33	12,682	64	621	3	19,868	96.9	

Invalid responses include no response or multiple responses.

4C. Do you usually get health-related information from any of the following sources? Health center medical staff

	Male		Female		Unknown		Total		
	Freq.	Pct.	Freq.	Pct.	Freq.	Pct.	Freq.	Pct.	
1 No	3,095	47	4,895	39	259	42	8,249	41.4	
2 Yes	3,473	53	7,824	62	364	58	11,661	58.6	
Valid responses =	6,568	33	12,719	64	623	3	19,910	97.1	

Invalid responses include no response or multiple responses.

4D. Do you usually get health-related information from any of the following sources? Health educators

	Male		Female		Unknown		Total		
	Freq.	Pct.	Freq.	Pct.	Freq.	Pct.	Freq.	Pct.	
1 No	3,136	48	5,321	42	258	43	8,715	43.9	
2 Yes	3,424	52	7,367	58	348	57	11,139	56.1	
Valid responses =	6,560	33	12,688	64	606	3	19,854	96.8	

Invalid responses include no response or multiple responses

4E. Do you usually get health-related information from any of the following sources? Friends

	Male		Female		Unknown		Total		
	Freq.	Pct.	Freq.	Pct.	Freq.	Pct.	Freq.	Pct.	
1 No	3,175	48	4,940	39	274	44	8,389	42.3	
2 Yes	3,383	52	7,733	61	343	56	11,459	57.7	
Valid responses =	6,558	33	12,673	64	617	3	19,848	96.8	

Invalid responses include no response or multiple responses

4F. Do you usually get health-related information from any of the following sources? Resident assistants/advisors

	Male		Female		Unknown		Total		
	Freq.	Pct.	Freq.	Pct.	Freq.	Pct.	Freq.	Pct.	
1 No	5,290	81	10,344	82	439	72	16,073	81.2	
2 Yes	1,254	19	2,286	18	170	28	3,710	18.8	
Valid responses =	6,544	33	12,630	64	609	3	19,783	96.5	

Invalid responses include no response or multiple responses

4G. Do you usually get health-related information from any of the following sources? Parents

	Male		Female		Unknown		Total		
	Freq.	Pct.	Freq.	Pct.	Freq.	Pct.	Freq.	Pct.	
1 No	1,975	30	2,818	22	170	28	4,963	25.0	
2 Yes	4,581	70	9,890	78	441	72	14,912	75.0	
Valid responses =	6,556	33	12,708	64	611	3	19,875	96.9	

Invalid responses include no response or multiple responses

4H. Do you usually get health-related information from any of the following sources? Religious center

	Male		Female		Unknown		Total		
	Freq.	Pct.	Freq.	Pct.	Freq.	Pct.	Freq.	Pct.	
1 No	5,637	86	11,210	88	489	80	17,336	87.3	
2 Yes	925	14	1,484	12	119	20	2,528	12.7	
Valid responses =	6,562	33	12,694	64	608	3	19,864	96.9	

Invalid responses include no response or multiple responses



American College Health Association-National College Health Assessment (ACHA-NCHA) Reference Group Data Report - Fall 2007

American College Health Association
P.O. Box 28937
Baltimore, MD 21240-8937
(410) 859-1500
www.acha.org

03/19/08

FREQUENCY REPORT

Number of Surveys (n) = 20,507 Paper & Web Surveys

4I. Do you usually get health-related information from any of the following sources? Television

	Male		Female		Unknown		Total		
	Freq.	Pct.	Freq.	Pct.	Freq.	Pct.	Freq.	Pct.	
1 No	3,530	54	6,581	52	318	52	10,429	52.4	
2 Yes	3,032	46	6,155	48	296	48	9,483	47.6	
Valid responses =	6,562	33	12,736	64	614	3	19,912	97.1	

Invalid responses include no response or multiple responses

4J. Do you usually get health-related information from any of the following sources? Magazines

	Male		Female		Unknown		Total		
	Freq.	Pct.	Freq.	Pct.	Freq.	Pct.	Freq.	Pct.	
1 No	3,606	55	5,316	42	310	51	9,232	46.4	
2 Yes	2,948	45	7,393	58	304	50	10,645	53.6	
Valid responses =	6,554	33	12,709	64	614	3	19,877	96.9	

Invalid responses include no response or multiple responses

4K. Do you usually get health-related information from any of the following sources? Campus peer educators

	Male		Female		Unknown		Total		
	Freq.	Pct.	Freq.	Pct.	Freq.	Pct.	Freq.	Pct.	
1 No	5,151	79	10,153	80	459	76	15,763	79.7	
2 Yes	1,378	21	2,482	20	148	24	4,008	20.3	
Valid responses =	6,529	33	12,635	64	607	3	19,771	96.4	

Invalid responses include no response or multiple responses

4L. Do you usually get health-related information from any of the following sources? Faculty/coursework

	Male		Female		Unknown		Total		
	Freq.	Pct.	Freq.	Pct.	Freq.	Pct.	Freq.	Pct.	
1 No	4,179	64	7,469	59	398	66	12,046	60.9	
2 Yes	2,344	36	5,193	41	208	34	7,745	39.1	
Valid responses =	6,523	33	12,662	64	606	3	19,791	96.5	

Invalid responses include no response or multiple responses

4M. Do you usually get health-related information from any of the following sources? Internet/world wide web

	Male		Female		Unknown		Total		
	Freq.	Pct.	Freq.	Pct.	Freq.	Pct.	Freq.	Pct.	
1 No	2,054	31	3,045	24	215	35	5,314	26.7	
2 Yes	4,499	69	9,669	76	401	65	14,569	73.3	
Valid responses =	6,553	33	12,714	64	616	3	19,883	97.0	

Invalid responses include no response or multiple responses

4N. Do you usually get health-related information from any of the following sources? Other

	Male		Female		Unknown		Total		
	Freq.	Pct.	Freq.	Pct.	Freq.	Pct.	Freq.	Pct.	
1 No	3,181	60	5,649	55	176	59	9,006	56.8	
2 Yes	2,088	40	4,632	45	124	41	6,844	43.2	
Valid responses =	5,269	33	10,281	65	300	2	15,850	77.3	

Invalid responses include no response or multiple responses

5A. Within the last 12 months, how often did you: Wear a seatbelt when you rode in a car?

	Male		Female		Unknown		Total		
	Freq.	Pct.	Freq.	Pct.	Freq.	Pct.	Freq.	Pct.	
1 N/A didn't do this within the last	45	1	31	0	9	1	85	0.4	
2 Never	46	1	30	0	6	1	82	0.4	
3 Rarely	155	2	138	1	14	2	307	1.5	
4 Sometimes	313	5	375	3	29	4	717	3.5	
5 Most of the time	1,221	18	2,002	16	121	17	3,344	16.4	
6 Always	4,971	74	10,355	80	534	75	15,860	77.8	
Valid responses =	6,751	33	12,931	63	713	3	20,395	99.5	

Invalid responses include no response or multiple responses



**American College Health Association-National College Health Assessment (ACHA-NCHA)
Reference Group Data Report - Fall 2007**

American College Health Association
P.O. Box 28937
Baltimore, MD 21240-8937
(410) 859-1500
www.acha.org

03/19/08

FREQUENCY REPORT

Number of Surveys (n) = 20,507 Paper & Web Surveys

5B. Within the last 12 months, how often did you: Wear a helmet when you rode a bicycle?

	Male		Female		Unknown		Total		
	Freq.	Pct.	Freq.	Pct.	Freq.	Pct.	Freq.	Pct.	
1 N/A didn't do this within the last 12 months	2,839	42	7,141	55	351	51	10,331	50.8	
2 Never	1,766	26	2,343	18	138	20	4,247	20.9	
3 Rarely	505	8	749	6	54	8	1,308	6.4	
4 Sometimes	396	6	620	5	38	6	1,054	5.2	
5 Most of the time	404	6	704	5	28	4	1,136	5.6	
6 Always	805	12	1,363	11	84	12	2,252	11.1	
Valid responses =	6,715	33	12,920	64	693	3	20,328	99.1	

Invalid responses include no response or multiple responses

5C. Within the last 12 months, how often did you: Wear a helmet when you rode a motorcycle?

	Male		Female		Unknown		Total		
	Freq.	Pct.	Freq.	Pct.	Freq.	Pct.	Freq.	Pct.	
1 N/A didn't do this within the last 12 months	5,261	79	10,480	81	506	74	16,247	80.1	
2 Never	195	3	222	2	24	4	441	2.2	
3 Rarely	77	1	75	1	4	1	156	0.8	
4 Sometimes	91	1	119	1	10	2	220	1.1	
5 Most of the time	176	3	182	1	15	2	373	1.8	
6 Always	903	14	1,826	14	125	18	2,854	14.1	
Valid responses =	6,703	33	12,904	64	684	3	20,291	98.9	

Invalid responses include no response or multiple responses

5D. Within the last 12 months, how often did you: Wear a helmet when you were inline skating?

	Male		Female		Unknown		Total		
	Freq.	Pct.	Freq.	Pct.	Freq.	Pct.	Freq.	Pct.	
1 N/A didn't do this within the last 12 months	5,430	81	10,838	84	520	76	16,788	82.7	
2 Never	735	11	1,179	9	76	11	1,990	9.8	
3 Rarely	135	2	235	2	25	4	395	1.9	
4 Sometimes	78	1	132	1	13	2	223	1.1	
5 Most of the time	85	1	131	1	7	1	223	1.1	
6 Always	245	4	378	3	46	7	669	3.3	
Valid responses =	6,708	33	12,893	64	687	3	20,288	98.9	

Invalid responses include no response or multiple responses

6A. Within the last 12 months, were you: In a physical fight?

	Male		Female		Unknown		Total		
	Freq.	Pct.	Freq.	Pct.	Freq.	Pct.	Freq.	Pct.	
1 No	5,735	85	12,357	96	596	84	18,688	91.7	
2 Yes	1,013	15	576	5	112	16	1,701	8.3	
Valid responses =	6,748	33	12,933	63	708	3	20,389	99.4	

Invalid responses include no response or multiple responses

6B. Within the last 12 months, were you: Physically assaulted (do not include sexual assault)?

	Male		Female		Unknown		Total		
	Freq.	Pct.	Freq.	Pct.	Freq.	Pct.	Freq.	Pct.	
1 No	6,327	94	12,497	97	657	93	19,481	95.7	
2 Yes	403	6	430	3	48	7	881	4.3	
Valid responses =	6,730	33	12,927	63	705	3	20,362	99.3	

Invalid responses include no response or multiple responses

**7A. Within the last 12 months, have you experienced:
Verbal threats for sex against your will?**

	Male		Female		Unknown		Total		
	Freq.	Pct.	Freq.	Pct.	Freq.	Pct.	Freq.	Pct.	
1 No	6,575	97	12,459	96	672	95	19,706	96.5	
2 Yes	180	3	496	4	36	5	712	3.5	
Valid responses =	6,755	33	12,955	63	708	3	20,418	99.6	

Invalid responses include no response or multiple responses



American College Health Association-National College Health Assessment (ACHA-NCHA) Reference Group Data Report - Fall 2007

American College Health Association
P.O. Box 28937
Baltimore, MD 21240-8937
(410) 859-1500
www.acha.org

03/19/08

FREQUENCY REPORT

Number of Surveys (n) = 20,507 Paper & Web Surveys

7B. Within the last 12 months, have you experienced:**Sexual touching against your will?**

	Male		Female		Unknown		Total		
	Freq.	Pct.	Freq.	Pct.	Freq.	Pct.	Freq.	Pct.	
1 No	6,471	96	11,858	92	637	90	18,966	93.1	
2 Yes	270	4	1,071	8	69	10	1,410	6.9	
Valid responses =	6,741	33	12,929	63	706	3	20,376	99.4	

Invalid responses include no response or multiple responses

7C. Within the last 12 months, have you experienced:**Attempted sexual penetration (vaginal, anal, oral intercourse) against your will?**

	Male		Female		Unknown		Total		
	Freq.	Pct.	Freq.	Pct.	Freq.	Pct.	Freq.	Pct.	
1 No	6,666	99	12,482	96	676	96	19,824	97.2	
2 Yes	85	1	465	4	29	4	579	2.8	
Valid responses =	6,751	33	12,947	63	705	3	20,403	99.5	

Invalid responses include no response or multiple responses

7D. Within the last 12 months, have you experienced:**Sexual penetration (vaginal, anal, oral intercourse) against your will?**

	Male		Female		Unknown		Total		
	Freq.	Pct.	Freq.	Pct.	Freq.	Pct.	Freq.	Pct.	
1 No	6,674	99	12,628	98	681	98	19,983	98.3	
2 Yes	61	1	265	2	16	2	342	1.7	
Valid responses =	6,735	33	12,893	63	697	3	20,325	99.1	

Invalid responses include no response or multiple responses

8A. Within the last 12 months, have you been in a relationship that was:**Emotionally abusive?**

	Male		Female		Unknown		Total		
	Freq.	Pct.	Freq.	Pct.	Freq.	Pct.	Freq.	Pct.	
1 No	6,048	90	10,882	84	591	84	17,521	85.9	
2 Yes	699	10	2,066	16	110	16	2,875	14.1	
Valid responses =	6,747	33	12,948	63	701	3	20,396	99.5	

Invalid responses include no response or multiple responses

8B. Within the last 12 months, have you been in a relationship that was:**Physically abusive?**

	Male		Female		Unknown		Total		
	Freq.	Pct.	Freq.	Pct.	Freq.	Pct.	Freq.	Pct.	
1 No	6,609	98	12,601	97	671	96	19,881	97.6	
2 Yes	130	2	336	3	30	4	496	2.4	
Valid responses =	6,739	33	12,937	63	701	3	20,377	99.4	

Invalid responses include no response or multiple responses

8C. Within the last 12 months, have you been in a relationship that was:**Sexually abusive?**

	Male		Female		Unknown		Total		
	Freq.	Pct.	Freq.	Pct.	Freq.	Pct.	Freq.	Pct.	
1 No	6,630	99	12,657	98	672	96	19,959	98.0	
2 Yes	102	2	269	2	27	4	398	2.0	
Valid responses =	6,732	33	12,926	63	699	3	20,357	99.3	

Invalid responses include no response or multiple responses



**American College Health Association-National College Health Assessment (ACHA-NCHA)
Reference Group Data Report - Fall 2007**

American College Health Association

P.O. Box 28937

Baltimore, MD 21240-8937

(410) 859-1500

www.acha.org

03/19/08

FREQUENCY REPORT

Number of Surveys (n) = 20,507 Paper & Web Surveys

9A. Within the last thirty days, on how many days did you use: Cigarettes

	Male		Female		Unknown		Total		
	Freq.	Pct.	Freq.	Pct.	Freq.	Pct.	Freq.	Pct.	
1 Never used	4,313	64	8,600	66	466	68	13,379	65.6	
2 Have used, but not in last 30	1,037	15	2,043	16	74	11	3,154	15.5	
3 1 - 2 days	381	6	630	5	23	3	1,034	5.1	
4 3 - 5 days	194	3	243	2	18	3	455	2.2	
5 6 - 9 days	117	2	194	2	12	2	323	1.6	
6 10 - 19 days	157	2	250	2	15	2	422	2.1	
7 20 - 29 days	149	2	251	2	20	3	420	2.1	
8 All 30 days	401	6	747	6	55	8	1,203	5.9	
Valid responses =	6,749	33	12,958	64	683	3	20,390	99.4	

Invalid responses include no response or multiple responses

9B. Within the last thirty days, on how many days did you use: Cigars

	Male		Female		Unknown		Total		
	Freq.	Pct.	Freq.	Pct.	Freq.	Pct.	Freq.	Pct.	
1 Never used	4,028	60	10,759	83	532	78	15,319	75.3	
2 Have used, but not in last 30	1,881	28	1,845	14	99	14	3,825	18.8	
3 1 - 2 days	548	8	262	2	28	4	838	4.1	
4 3 - 5 days	137	2	32	0	11	2	180	0.9	
5 6 - 9 days	57	1	14	0	5	1	76	0.4	
6 10 - 19 days	38	1	17	0	4	1	59	0.3	
7 20 - 29 days	19	0	1	0	1	0	21	0.1	
8 All 30 days	23	0	5	0	6	1	34	0.2	
Valid responses =	6,731	33	12,935	64	686	3	20,352	99.2	

Invalid responses include no response or multiple responses

9C. Within the last thirty days, on how many days did you use: Smokeless tobacco

	Male		Female		Unknown		Total		
	Freq.	Pct.	Freq.	Pct.	Freq.	Pct.	Freq.	Pct.	
1 Never used	5,291	79	12,118	95	612	90	18,021	89.3	
2 Have used, but not in last 30	830	12	527	4	32	5	1,389	6.9	
3 1 - 2 days	165	3	75	1	10	2	250	1.2	
4 3 - 5 days	68	1	26	0	7	1	101	0.5	
5 6 - 9 days	61	1	29	0	5	1	95	0.5	
6 10 - 19 days	86	1	22	0	3	0	111	0.6	
7 20 - 29 days	67	1	7	0	2	0	76	0.4	
8 All 30 days	113	2	10	0	9	1	132	0.7	
Valid responses =	6,681	33	12,814	64	680	3	20,175	98.4	

Invalid responses include no response or multiple responses

9D. Within the last thirty days, on how many days did you use: Alcohol (beer, wine, liquor)

	Male		Female		Unknown		Total		
	Freq.	Pct.	Freq.	Pct.	Freq.	Pct.	Freq.	Pct.	
1 Never used	1,665	25	2,758	21	213	31	4,636	22.8	
2 Have used, but not in last 30	887	13	2,153	17	93	14	3,133	15.4	
3 1 - 2 days	1,029	15	2,604	20	106	16	3,739	18.4	
4 3 - 5 days	1,048	16	2,123	17	89	13	3,260	16.0	
5 6 - 9 days	911	14	1,708	13	77	11	2,696	13.3	
6 10 - 19 days	874	13	1,246	10	72	11	2,192	10.8	
7 20 - 29 days	242	4	275	2	15	2	532	2.6	
8 All 30 days	86	1	38	0	16	2	140	0.7	
Valid responses =	6,742	33	12,905	63	681	3	20,328	99.1	

Invalid responses include no response or multiple responses



American College Health Association-National College Health Assessment (ACHA-NCHA) Reference Group Data Report - Fall 2007

American College Health Association

P.O. Box 28937

Baltimore, MD 21240-8937

(410) 859-1500

www.acha.org

03/19/08

FREQUENCY REPORT

Number of Surveys (n) = 20,507 Paper & Web Surveys

9E. Within the last thirty days, on how many days did you use: Marijuana (pot, hash, hash oil)

	Male		Female		Unknown		Total		
	Freq.	Pct.	Freq.	Pct.	Freq.	Pct.	Freq.	Pct.	
1 Never used	4,417	66	9,110	71	478	70	14,005	68.8	
2 Have used, but not in last 30	1,238	18	2,430	19	97	14	3,765	18.5	
3 1 - 2 days	342	5	593	5	42	6	977	4.8	
4 3 - 5 days	204	3	235	2	15	2	454	2.2	
5 6 - 9 days	118	2	153	1	9	1	280	1.4	
6 10 - 19 days	142	2	181	1	9	1	332	1.6	
7 20 - 29 days	127	2	138	1	14	2	279	1.4	
8 All 30 days	148	2	84	1	19	3	251	1.2	
Valid responses =	6,736	33	12,924	64	683	3	20,343	99.2	

Invalid responses include no response or multiple responses

9F. Within the last thirty days, on how many days did you use: Cocaine (crack, rock, freebase)

	Male		Female		Unknown		Total		
	Freq.	Pct.	Freq.	Pct.	Freq.	Pct.	Freq.	Pct.	
1 Never used	6,277	93	12,280	95	637	93	19,194	94.2	
2 Have used, but not in last 30	348	5	541	4	35	5	924	4.5	
3 1 - 2 days	56	1	61	1	8	1	125	0.6	
4 3 - 5 days	20	0	24	0	0	0	44	0.2	
5 6 - 9 days	25	0	18	0	2	0	45	0.2	
6 10 - 19 days	6	0	8	0	0	0	14	0.1	
7 20 - 29 days	2	0	2	0	1	0	5	0.0	
8 All 30 days	10	0	1	0	4	1	15	0.1	
Valid responses =	6,744	33	12,935	64	687	3	20,366	99.3	

Invalid responses include no response or multiple responses

9G. Within the last thirty days, on how many days did you use: Amphetamines (diet pills, speed, meth, crank)

	Male		Female		Unknown		Total		
	Freq.	Pct.	Freq.	Pct.	Freq.	Pct.	Freq.	Pct.	
1 Never used	6,290	93	12,024	93	642	93	18,956	93.1	
2 Have used, but not in last 30	320	5	659	5	31	5	1,010	5.0	
3 1 - 2 days	41	1	77	1	2	0	120	0.6	
4 3 - 5 days	23	0	41	0	2	0	66	0.3	
5 6 - 9 days	10	0	37	0	3	0	50	0.2	
6 10 - 19 days	19	0	41	0	1	0	61	0.3	
7 20 - 29 days	12	0	35	0	1	0	48	0.2	
8 All 30 days	19	0	32	0	6	1	57	0.3	
Valid responses =	6,734	33	12,946	64	688	3	20,368	99.3	

Invalid responses include no response or multiple responses

9H. Within the last thirty days, on how many days did you use: Rohypnol (roofies), GHB or Liquid X (intentional use)

	Male		Female		Unknown		Total		
	Freq.	Pct.	Freq.	Pct.	Freq.	Pct.	Freq.	Pct.	
1 Never used	6,620	98	12,820	99	669	97	20,109	98.9	
2 Have used, but not in last 30	89	1	88	1	8	1	185	0.9	
3 1 - 2 days	7	0	4	0	2	0	13	0.1	
4 3 - 5 days	4	0	1	0	0	0	5	0.0	
5 6 - 9 days	4	0	4	0	0	0	8	0.0	
6 10 - 19 days	1	0	0	0	1	0	2	0.0	
7 20 - 29 days	2	0	0	0	1	0	3	0.0	
8 All 30 days	7	0	1	0	6	1	14	0.1	
Valid responses =	6,734	33	12,918	64	687	3	20,339	99.2	

Invalid responses include no response or multiple responses



**American College Health Association-National College Health Assessment (ACHA-NCHA)
Reference Group Data Report - Fall 2007**

American College Health Association

P.O. Box 28937

Baltimore, MD 21240-8937

(410) 859-1500

www.acha.org

03/19/08

FREQUENCY REPORT

Number of Surveys (n) = 20,507 Paper & Web Surveys

9J. Within the last thirty days, on how many days did you use: MDMA (Ecstasy, XTC, E, X, Adam)

	Male		Female		Unknown		Total	
	Freq.	Pct.	Freq.	Pct.	Freq.	Pct.	Freq.	Pct.
1 Never used	5,024	95	10,529	96	228	96	15,781	95.9
2 Have used, but not in last 30	238	5	362	3	9	4	609	3.7
3 1 - 2 days	21	0	31	0	1	0	53	0.3
4 3 - 5 days	4	0	1	0	0	0	5	0.0
5 6 - 9 days	2	0	2	0	0	0	4	0.0
6 10 - 19 days	3	0	0	0	0	0	3	0.0
7 20 - 29 days	0	0	0	0	0	0	0	0.0
8 All 30 days	3	0	0	0	0	0	3	0.0
Valid responses =	5,295	32	10,925	66	238	1	16,458	80.3

Invalid responses include no response or multiple responses

9I. Within the last thirty days, on how many days did you use: Other drugs

	Male		Female		Unknown		Total	
	Freq.	Pct.	Freq.	Pct.	Freq.	Pct.	Freq.	Pct.
1 Never used	5,884	89	11,822	93	602	91	18,308	91.6
2 Have used, but not in last 30	453	7	625	5	31	5	1,109	5.5
3 1 - 2 days	115	2	128	1	7	1	250	1.3
4 3 - 5 days	60	1	52	0	7	1	119	0.6
5 6 - 9 days	24	0	25	0	1	0	50	0.3
6 10 - 19 days	27	0	17	0	3	1	47	0.2
7 20 - 29 days	7	0	16	0	0	0	23	0.1
8 All 30 days	28	0	47	0	10	2	85	0.4
Valid responses =	6,598	33	12,732	64	661	3	19,991	97.5

Invalid responses include no response or multiple responses

10A. Within the last thirty days, how often do you think the typical student at your school used:

Cigarettes

	Male		Female		Unknown		Total	
	Freq.	Pct.	Freq.	Pct.	Freq.	Pct.	Freq.	Pct.
1 Never used	974	15	1,341	10	113	17	2,428	12.0
2 One or more days	3,380	50	5,740	45	255	38	9,375	46.2
3 Used daily	2,375	35	5,807	45	309	46	8,491	41.8
Valid responses =	6,729	33	12,888	64	677	3	20,294	99.0

Invalid responses include no response or multiple responses

10B. Within the last thirty days, how often do you think the typical student at your school used:

Cigars

	Male		Female		Unknown		Total	
	Freq.	Pct.	Freq.	Pct.	Freq.	Pct.	Freq.	Pct.
1 Never used	2,714	40	5,320	41	285	43	8,319	41.1
2 One or more days	3,611	54	6,814	53	332	50	10,757	53.1
3 Used daily	385	6	728	6	52	8	1,165	5.8
Valid responses =	6,710	33	12,862	64	669	3	20,241	98.7

Invalid responses include no response or multiple responses

10C. Within the last thirty days, how often do you think the typical student at your school used:

Smokeless tobacco

	Male		Female		Unknown		Total	
	Freq.	Pct.	Freq.	Pct.	Freq.	Pct.	Freq.	Pct.
1 Never used	2,662	40	4,992	39	295	44	7,949	39.3
2 One or more days	3,006	45	5,906	46	276	41	9,188	45.5
3 Used daily	1,025	15	1,948	15	95	14	3,068	15.2
Valid responses =	6,693	33	12,846	64	666	3	20,205	98.5

Invalid responses include no response or multiple responses



**American College Health Association-National College Health Assessment (ACHA-NCHA)
Reference Group Data Report - Fall 2007**

American College Health Association
P.O. Box 28937
Baltimore, MD 21240-8937
(410) 859-1500
www.acha.org

03/19/08

FREQUENCY REPORT

Number of Surveys (n) = 20,507 Paper & Web Surveys

10D. Within the last thirty days, how often do you think the typical student at your school used::

Alcohol (beer, wine, liquor)

	Male		Female		Unknown		Total	
	Freq.	Pct.	Freq.	Pct.	Freq.	Pct.	Freq.	Pct.
1 Never used	380	6	526	4	71	11	977	4.8
2 One or more days	3,824	57	6,910	54	336	50	11,070	54.6
3 Used daily	2,527	38	5,457	42	262	39	8,246	40.6
Valid responses =	6,731	33	12,893	64	669	3	20,293	99.0

Invalid responses include no response or multiple responses

10E. Within the last thirty days, how often do you think the typical student at your school used:

Marijuana (pot, hash, hash oil)

	Male		Female		Unknown		Total	
	Freq.	Pct.	Freq.	Pct.	Freq.	Pct.	Freq.	Pct.
1 Never used	1,432	21	2,446	19	166	25	4,044	20.0
2 One or more days	3,931	59	7,394	58	349	52	11,674	57.7
3 Used daily	1,352	20	3,012	23	153	23	4,517	22.3
Valid responses =	6,715	33	12,852	64	668	3	20,235	98.7

Invalid responses include no response or multiple responses

10F. Within the last thirty days, how often do you think the typical student at your school used:

Cocaine (crack, rock, freebase)

	Male		Female		Unknown		Total	
	Freq.	Pct.	Freq.	Pct.	Freq.	Pct.	Freq.	Pct.
1 Never used	4,354	65	7,545	59	415	63	12,314	61.0
2 One or more days	2,147	32	4,810	38	219	33	7,176	35.6
3 Used daily	200	3	461	4	30	5	691	3.4
Valid responses =	6,701	33	12,816	64	664	3	20,181	98.4

Invalid responses include no response or multiple responses

10G. Within the last thirty days, how often do you think the typical student at your school used:

Amphetamines (diet pills, speed, meth, crank)

	Male		Female		Unknown		Total	
	Freq.	Pct.	Freq.	Pct.	Freq.	Pct.	Freq.	Pct.
1 Never used	4,202	63	6,491	51	378	58	11,071	55.0
2 One or more days	2,217	33	5,448	43	234	36	7,899	39.2
3 Used daily	247	4	870	7	38	6	1,155	5.7
Valid responses =	6,666	33	12,809	64	650	3	20,125	98.1

Invalid responses include no response or multiple responses

10H. Within the last thirty days, how often do you think the typical student at your school used:

Rohypnol (roofies), GHB or Liquid X (intentional use)

	Male		Female		Unknown		Total	
	Freq.	Pct.	Freq.	Pct.	Freq.	Pct.	Freq.	Pct.
1 Never used	5,001	75	8,975	70	482	74	14,458	72.0
2 One or more days	1,550	23	3,589	28	151	23	5,290	26.3
3 Used daily	99	2	215	2	16	3	330	1.6
Valid responses =	6,650	33	12,779	64	649	3	20,078	97.9

Invalid responses include no response or multiple responses

10J. Within the last thirty days, how often do you think the typical student at your school used:

MDMA (Ecstasy, XTC, E, X, Adam)

	Male		Female		Unknown		Total	
	Freq.	Pct.	Freq.	Pct.	Freq.	Pct.	Freq.	Pct.
1 Never used	3,546	67	6,760	62	157	68	10,463	64.1
2 One or more days	1,634	31	3,853	36	68	30	5,555	34.0
3 Used daily	81	2	212	2	5	2	298	1.8
Valid responses =	5,261	32	10,825	66	230	1	16,316	79.6

Invalid responses include no response or multiple responses



American College Health Association-National College Health Assessment (ACHA-NCHA) Reference Group Data Report - Fall 2007

American College Health Association
P.O. Box 28937
Baltimore, MD 21240-8937
(410) 859-1500
www.acha.org

03/19/08

FREQUENCY REPORT

Number of Surveys (n) = 20,507 Paper & Web Surveys

10I. Within the last thirty days, how often do you think the typical student at your school used:**Other drugs**

	Male		Female		Unknown		Total		
	Freq.	Pct.	Freq.	Pct.	Freq.	Pct.	Freq.	Pct.	
1 Never used	3,488	54	5,967	48	350	56	9,805	50.0	
2 One or more days	2,686	41	5,857	47	222	35	8,765	44.7	
3 Used daily	321	5	661	5	55	9	1,037	5.3	
Valid responses =	6,495	33	12,485	64	627	3	19,607	95.6	

Invalid responses include no response or multiple responses

11A. Within the last thirty days, did you:**Drive after drinking any alcohol at all**

	Male		Female		Unknown		Total		
	Freq.	Pct.	Freq.	Pct.	Freq.	Pct.	Freq.	Pct.	
1 Not applicable/Don't drive	768	11	1,452	11	101	15	2,321	11.4	
2 Not applicable/Don't drink	1,580	24	2,863	22	134	20	4,577	22.6	
3 No	2,674	40	6,122	47	307	46	9,103	44.9	
4 Yes	1,701	25	2,468	19	122	18	4,291	21.1	
Valid responses =	6,723	33	12,905	64	664	3	20,292	99.0	

Invalid responses include no response or multiple responses

11B. Within the last thirty days, did you:**Drive after having 5 or more drinks**

	Male		Female		Unknown		Total		
	Freq.	Pct.	Freq.	Pct.	Freq.	Pct.	Freq.	Pct.	
1 Not applicable/Don't drive	769	12	1,446	11	97	14	2,312	11.4	
2 Not applicable/Don't drink	1,592	24	2,889	22	141	21	4,622	22.8	
3 No	3,898	58	8,219	64	399	59	12,516	61.7	
4 Yes	453	7	331	3	35	5	819	4.0	
Valid responses =	6,712	33	12,885	64	672	3	20,269	98.8	

Invalid responses include no response or multiple responses

12. The last time you "partied"/socialized, how many hours did you drink alcohol?

	Male		Female		Unknown		Total		
Hours	Freq.	Pct.	Freq.	Pct.	Freq.	Pct.	Freq.	Pct.	
0	2,001	30	3,695	29	223	35	5,919	29.9	
1-2	1,298	20	3,103	25	122	19	4,523	22.9	
3-4	1,678	26	3,478	28	140	22	5,296	26.8	
5-6	1,116	17	1,812	14	91	14	3,019	15.3	
7-8	279	4	332	3	22	4	633	3.2	
9-10	100	2	74	1	18	3	192	1.0	
11-12	43	1	34	0	4	1	81	0.4	
13-14	13	0	6	0	2	0	21	0.1	
15-16	15	0	4	0	1	0	20	0.1	
GE 17	31	1	28	0	9	1	68	0.3	
Valid responses =	6,574	33	12,566	64	632	3	19,772	96.4	

Invalid responses include no response or multiple responses

	Mean	Median	Std Dev	Min	Max
Male	2.82	2.00	3.27	0	67
Female	2.45	2.00	2.62	0	48
Overall	2.59	2.00	2.95	0	67



**American College Health Association-National College Health Assessment (ACHA-NCHA)
Reference Group Data Report - Fall 2007**

American College Health Association
P.O. Box 28937
Baltimore, MD 21240-8937
(410) 859-1500
www.acha.org

03/19/08

FREQUENCY REPORT

Number of Surveys (n) = 20,507 Paper & Web Surveys

13. The last time you "partied"/socialized, how many alcoholic drinks did you have?

Drinks	Male		Female		Unknown		Total		
	Freq.	Pct.	Freq.	Pct.	Freq.	Pct.	Freq.	Pct.	
0	1,934	29	3,515	28	218	34	5,667	28.2	
1-2	822	12	2,659	21	89	14	3,570	17.8	
3-4	902	14	2,828	22	102	16	3,832	19.1	
5-6	958	14	2,033	16	63	10	3,054	15.2	
7-8	624	9	934	7	55	9	1,613	8.0	
9-10	558	8	477	4	50	8	1,085	5.4	
11-12	333	5	149	1	31	5	513	2.6	
13-14	110	2	37	0	9	1	156	0.8	
15-16	211	3	76	1	8	1	295	1.5	
GE 17	221	3	70	1	20	3	311	1.5	
Valid responses=	6,673	33	12,778	64	645	3	20,096	98.0	

Invalid responses include no response or multiple responses

	Mean	Median	Std Dev	Min	Max
Male	5.04	4.00	5.67	0	70
Female	3.26	3.00	3.44	0	65
Overall	3.88	3.00	4.45	0	70

14. In the last two weeks, on how many occasions did you drink the same or more alcohol as indicated in item #13?

Occasions	Male		Female		Unknown		Total		
	Freq.	Pct.	Freq.	Pct.	Freq.	Pct.	Freq.	Pct.	
0	3,418	51	6,827	53	328	53	10,573	52.7	
1	1,258	19	2,655	21	112	18	4,025	20.1	
2	927	14	1,670	13	77	12	2,674	13.3	
3	456	7	707	6	43	7	1,206	6.0	
4	258	4	454	4	24	4	736	3.7	
5	138	2	214	2	17	3	369	1.8	
6	53	1	96	1	4	1	153	0.8	
7	38	1	42	0	3	1	83	0.4	
8	30	1	31	0	6	1	67	0.3	
GE 9	83	1	85	1	11	2	179	0.9	
Valid responses=	6,659	33	12,781	64	625	3	20,065	97.8	

Invalid responses include no response or multiple responses

	Mean	Median	Std Dev	Min	Max
Male	1.21	1.21	1.97	0	20
Female	1.02	0.00	1.63	0	21
Overall	1.09	0.00	1.77	0	22



American College Health Association-National College Health Assessment (ACHA-NCHA) Reference Group Data Report - Fall 2007

American College Health Association
P.O. Box 28937
Baltimore, MD 21240-8937
(410) 859-1500
www.acha.org

03/19/08

FREQUENCY REPORT

Number of Surveys (n) = 20,507 Paper & Web Surveys

15. How many alcoholic drinks do you think the typical student at your school had the last time he/she "partied"/socialized?

Drinks	Male		Female		Unknown		Total	
	Freq.	Pct.	Freq.	Pct.	Freq.	Pct.	Freq.	Pct.
0	500	8	737	6	70	12	1,307	6.6
1-2	396	6	548	4	38	6	982	4.9
3-4	1,321	20	2,966	23	114	19	4,401	22.1
5-6	2,180	33	4,769	38	161	27	7,110	35.7
7-8	1,033	16	1,895	15	94	16	3,022	15.2
9-10	794	12	1,309	10	66	11	2,169	10.9
11-12	182	3	184	1	21	4	387	1.9
13-14	27	0	29	0	2	0	58	0.3
15-16	98	2	160	1	16	3	274	1.4
GE 17	81	1	107	1	22	4	210	1.1
Valid responses=	6,612	33	12,704	64	604	3	19,920	97.1

Invalid responses include no response or multiple responses

	Mean	Median	Std Dev	Min	Max
Male	5.90	5.00	4.34	0	90
Female	5.71	5.00	3.81	0	90
Overall	5.80	5.00	4.18	0	90

16. Think back over the last two weeks. How many times, if any, have you had five or more alcoholic drinks at a sitting?

	Male		Female		Unknown		Total	
	Freq.	Pct.	Freq.	Pct.	Freq.	Pct.	Freq.	Pct.
1 None	3,908	58	9,152	71	409	64	13,469	66.5
2 1 time	883	13	1,619	13	60	9	2,562	12.6
3 2 times	692	10	926	7	62	10	1,680	8.3
4 3 times	446	7	483	4	29	5	958	4.7
5 4 times	293	4	310	2	32	5	635	3.1
6 5 times	200	3	179	1	23	4	402	2.0
7 6 times	96	1	107	1	7	1	210	1.0
8 7 times	68	1	43	0	2	0	113	0.6
9 8 times	50	1	27	0	6	1	83	0.4
10 9 or more times	86	1	55	0	12	2	153	0.8
Valid responses=	6,722	33	12,901	64	642	3	20,265	98.8

Invalid responses include no response or multiple responses

17A. During the last 12 months, if you "partied"/socialized, how often did you...

Alternate non-alcoholic with alcoholic beverages

	Male		Female		Unknown		Total	
	Freq.	Pct.	Freq.	Pct.	Freq.	Pct.	Freq.	Pct.
1 Not applicable/Don't drink	1,922	29	3,346	26	190	30	5,458	27.0
2 Always	441	7	1,374	11	51	8	1,866	9.2
3 Usually	891	13	2,111	16	96	15	3,098	15.3
4 Sometimes	1,307	20	2,679	21	95	15	4,081	20.2
5 Rarely	1,053	16	1,866	15	99	15	3,018	14.9
6 Never	1,093	16	1,499	12	110	17	2,702	13.4
Valid responses=	6,707	33	12,875	64	641	3	20,223	98.6

Invalid responses include no response or multiple responses



American College Health Association-National College Health Assessment (ACHA-NCHA) Reference Group Data Report - Fall 2007

American College Health Association
P.O. Box 28937
Baltimore, MD 21240-8937
(410) 859-1500
www.acha.org

03/19/08

FREQUENCY REPORT

Number of Surveys (n) = 20,507 Paper & Web Surveys

17B. During the last 12 months, if you "partied"/socialized, how often did you...

Determine, in advance, not to exceed a set number of drinks

	Male		Female		Unknown		Total		
	Freq.	Pct.	Freq.	Pct.	Freq.	Pct.	Freq.	Pct.	
1 Not applicable/Don't drink	1,896	28	3,350	26	190	30	5,436	26.9	
2 Always	851	13	2,393	19	89	14	3,333	16.5	
3 Usually	921	14	2,072	16	77	12	3,070	15.2	
4 Sometimes	909	14	1,915	15	97	15	2,921	14.5	
5 Rarely	853	13	1,425	11	77	12	2,355	11.7	
6 Never	1,272	19	1,707	13	111	17	3,090	15.3	
Valid responses=	6,702	33	12,862	64	641	3	20,205	98.5	

Invalid responses include no response or multiple responses

17C. During the last 12 months, if you "partied"/socialized, how often did you...

Choose not to drink alcohol

	Male		Female		Unknown		Total		
	Freq.	Pct.	Freq.	Pct.	Freq.	Pct.	Freq.	Pct.	
1 Not applicable/Don't drink	1,618	24	2,594	20	166	26	4,378	21.7	
2 Always	405	6	985	8	48	8	1,438	7.1	
3 Usually	838	13	2,308	18	85	13	3,231	16.0	
4 Sometimes	2,234	33	5,018	39	197	31	7,449	36.9	
5 Rarely	1,010	15	1,382	11	78	12	2,470	12.2	
6 Never	593	9	578	5	66	10	1,237	6.1	
Valid responses=	6,698	33	12,865	64	640	3	20,203	98.5	

Invalid responses include no response or multiple responses

17D. During the last 12 months, if you "partied"/socialized, how often did you...

Use a designated driver

	Male		Female		Unknown		Total		
	Freq.	Pct.	Freq.	Pct.	Freq.	Pct.	Freq.	Pct.	
1 Not applicable/Don't drink	1,998	30	3,487	27	194	31	5,679	28.2	
2 Always	2,501	37	6,275	49	250	39	9,026	44.8	
3 Usually	950	14	1,620	13	79	13	2,649	13.1	
4 Sometimes	519	8	720	6	49	8	1,288	6.4	
5 Rarely	234	4	258	2	20	3	512	2.5	
6 Never	494	7	466	4	42	7	1,002	5.0	
Valid responses=	6,696	33	12,826	64	634	3	20,156	98.3	

Invalid responses include no response or multiple responses

17E. During the last 12 months, if you "partied"/socialized, how often did you...

Eat before and/or during drinking

	Male		Female		Unknown		Total		
	Freq.	Pct.	Freq.	Pct.	Freq.	Pct.	Freq.	Pct.	
1 Not applicable/Don't drink	1,878	28	3,300	26	190	30	5,368	26.6	
2 Always	1,841	28	4,466	35	168	27	6,475	32.1	
3 Usually	1,955	29	3,453	27	158	25	5,566	27.6	
4 Sometimes	742	11	1,236	10	65	10	2,043	10.1	
5 Rarely	137	2	264	2	23	4	424	2.1	
6 Never	150	2	145	1	31	5	326	1.6	
Valid responses=	6,703	33	12,864	64	635	3	20,202	98.5	

Invalid responses include no response or multiple responses



**American College Health Association-National College Health Assessment (ACHA-NCHA)
Reference Group Data Report - Fall 2007**

American College Health Association
P.O. Box 28937
Baltimore, MD 21240-8937
(410) 859-1500
www.acha.org

03/19/08

FREQUENCY REPORT

Number of Surveys (n) = 20,507 Paper & Web Surveys

**17F. During the last 12 months, if you "partied"/socialized, how often did you...
Have a friend let you know when you've had enough**

	Male		Female		Unknown		Total		
	Freq.	Pct.	Freq.	Pct.	Freq.	Pct.	Freq.	Pct.	
1 Not applicable/Don't drink	1,928	29	3,461	27	193	31	5,582	27.7	
2 Always	517	8	1,842	14	96	15	2,455	12.2	
3 Usually	646	10	1,411	11	69	11	2,126	10.5	
4 Sometimes	793	12	1,464	11	80	13	2,337	11.6	
5 Rarely	1,009	15	1,734	14	82	13	2,825	14.0	
6 Never	1,811	27	2,927	23	107	17	4,845	24.0	
Valid responses=	6,704	33	12,839	64	627	3	20,170	98.4	

Invalid responses include no response or multiple responses

**17G. During the last 12 months, if you "partied"/socialized, how often did you...
Keep track of how many drinks you were having**

	Male		Female		Unknown		Total		
	Freq.	Pct.	Freq.	Pct.	Freq.	Pct.	Freq.	Pct.	
1 Not applicable/Don't drink	1,890	28	3,351	26	188	30	5,429	26.9	
2 Always	1,660	25	4,347	34	151	24	6,158	30.5	
3 Usually	1,127	17	2,406	19	91	15	3,624	18.0	
4 Sometimes	788	12	1,285	10	76	12	2,149	10.7	
5 Rarely	606	9	817	6	68	11	1,491	7.4	
6 Never	633	9	636	5	51	8	1,320	6.5	
Valid responses=	6,704	33	12,842	64	625	3	20,171	98.4	

Invalid responses include no response or multiple responses

**17H. During the last 12 months, if you "partied"/socialized, how often did you...
Pace your drinks to 1 or fewer per hour**

	Male		Female		Unknown		Total		
	Freq.	Pct.	Freq.	Pct.	Freq.	Pct.	Freq.	Pct.	
1 Not applicable/Don't drink	1,893	28	3,373	26	195	31	5,461	27.1	
2 Always	451	7	1,841	14	65	10	2,357	11.7	
3 Usually	639	10	1,952	15	55	9	2,646	13.1	
4 Sometimes	1,046	16	2,286	18	83	13	3,415	16.9	
5 Rarely	1,274	19	1,931	15	110	18	3,315	16.4	
6 Never	1,398	21	1,456	11	120	19	2,974	14.7	
Valid responses=	6,701	33	12,839	64	628	3	20,168	98.3	

Invalid responses include no response or multiple responses

**17I. During the last 12 months, if you "partied"/socialized, how often did you...
Avoid drinking games**

	Male		Female		Unknown		Total		
	Freq.	Pct.	Freq.	Pct.	Freq.	Pct.	Freq.	Pct.	
1 Not applicable/Don't drink	1,853	28	3,235	25	188	30	5,276	26.2	
2 Always	980	15	2,673	21	102	16	3,755	18.6	
3 Usually	756	11	1,697	13	49	8	2,502	12.4	
4 Sometimes	843	13	1,957	15	78	13	2,878	14.3	
5 Rarely	1,005	15	1,837	14	91	15	2,933	14.6	
6 Never	1,251	19	1,435	11	117	19	2,803	13.9	
Valid responses=	6,688	33	12,834	64	625	3	20,147	98.2	

Invalid responses include no response or multiple responses



**American College Health Association-National College Health Assessment (ACHA-NCHA)
Reference Group Data Report - Fall 2007**

American College Health Association
P.O. Box 28937
Baltimore, MD 21240-8937
(410) 859-1500
www.acha.org

03/19/08

FREQUENCY REPORT

Number of Surveys (n) = 20,507 Paper & Web Surveys

**17J. During the last 12 months, if you "partied"/socialized, how often did you...
Drink an alcohol look-alike (non-alcoholic beer, punch etc.)**

	Male		Female		Unknown		Total		
	Freq.	Pct.	Freq.	Pct.	Freq.	Pct.	Freq.	Pct.	
1 Not applicable/Don't drink	1,864	28	3,143	25	178	28	5,185	25.7	
2 Always	104	2	346	3	25	4	475	2.4	
3 Usually	186	3	590	5	26	4	802	4.0	
4 Sometimes	608	9	2,120	17	68	11	2,796	13.9	
5 Rarely	753	11	1,870	15	91	15	2,714	13.5	
6 Never	3,176	48	4,769	37	240	38	8,185	40.6	
Valid responses =	6,691	33	12,838	64	628	3	20,157	98.3	

Invalid responses include no response or multiple responses

**18A. If you drink alcohol, within the last 12 months, have you experienced any of the following as a consequence
of your drinking? Physically injured yourself**

	Male		Female		Unknown		Total		
	Freq.	Pct.	Freq.	Pct.	Freq.	Pct.	Freq.	Pct.	
1 Not applicable/Don't drink	1,901	28	3,315	26	200	31	5,416	26.7	
2 No	4,073	61	8,153	63	360	57	12,586	62.1	
3 Yes	749	11	1,442	11	77	12	2,268	11.2	
Valid responses =	6,723	33	12,910	64	637	3	20,270	98.8	

Invalid responses include no response or multiple responses

**18B. If you drink alcohol, within the last 12 months, have you experienced any of the following as a consequence
of your drinking? Physically injured another person**

	Male		Female		Unknown		Total		
	Freq.	Pct.	Freq.	Pct.	Freq.	Pct.	Freq.	Pct.	
1 Not applicable/Don't drink	1,906	28	3,311	26	196	31	5,413	26.7	
2 No	4,494	67	9,328	72	408	64	14,230	70.3	
3 Yes	321	5	257	2	30	5	608	3.0	
Valid responses =	6,721	33	12,896	64	634	3	20,251	98.8	

Invalid responses include no response or multiple responses

**18C. If you drink alcohol, within the last 12 months, have you experienced any of the following as a consequence
of your drinking? Been involved in a fight**

	Male		Female		Unknown		Total		
	Freq.	Pct.	Freq.	Pct.	Freq.	Pct.	Freq.	Pct.	
1 Not applicable/Don't drink	1,898	28	3,313	26	197	31	5,408	26.7	
2 No	4,322	64	9,160	71	390	61	13,872	68.5	
3 Yes	498	7	423	3	48	8	969	4.8	
Valid responses =	6,718	33	12,896	64	635	3	20,249	98.7	

Invalid responses include no response or multiple responses

**18D. If you drink alcohol, within the last 12 months, have you experienced any of the following as a consequence
of your drinking? Did something you later regretted**

	Male		Female		Unknown		Total		
	Freq.	Pct.	Freq.	Pct.	Freq.	Pct.	Freq.	Pct.	
1 Not applicable/Don't drink	1,896	28	3,307	26	194	31	5,397	26.7	
2 No	3,211	48	6,732	52	281	44	10,224	50.5	
3 Yes	1,608	24	2,855	22	158	25	4,621	22.8	
Valid responses =	6,715	33	12,894	64	633	3	20,242	98.7	

Invalid responses include no response or multiple responses



**American College Health Association-National College Health Assessment (ACHA-NCHA)
Reference Group Data Report - Fall 2007**

American College Health Association
P.O. Box 28937
Baltimore, MD 21240-8937
(410) 859-1500
www.acha.org

03/19/08

FREQUENCY REPORT

Number of Surveys (n) = 20,507 Paper & Web Surveys

18E. If you drink alcohol, within the last 12 months, have you experienced any of the following as a consequence of your drinking? Forgot where you were or what you did

	Male		Female		Unknown		Total		
	Freq.	Pct.	Freq.	Pct.	Freq.	Pct.	Freq.	Pct.	
1 Not applicable/Don't drink	1,896	28	3,307	26	191	30	5,394	26.7	
2 No	3,388	51	7,245	56	302	48	10,935	54.1	
3 Yes	1,422	21	2,322	18	139	22	3,883	19.2	
Valid responses =	6,706	33	12,874	64	632	3	20,212	98.6	

Invalid responses include no response or multiple responses

18F. If you drink alcohol, within the last 12 months, have you experienced any of the following as a consequence of your drinking? Had someone use force or threat of force to have sex with you

	Male		Female		Unknown		Total		
	Freq.	Pct.	Freq.	Pct.	Freq.	Pct.	Freq.	Pct.	
1 Not applicable/Don't drink	1,902	28	3,304	26	196	31	5,402	26.7	
2 No	4,771	71	9,413	73	421	67	14,605	72.2	
3 Yes	41	1	171	1	16	3	228	1.1	
Valid responses =	6,714	33	12,888	64	633	3	20,235	98.7	

Invalid responses include no response or multiple responses

18G. If you drink alcohol, within the last 12 months, have you experienced any of the following as a consequence of your drinking? Had unprotected sex

	Male		Female		Unknown		Total		
	Freq.	Pct.	Freq.	Pct.	Freq.	Pct.	Freq.	Pct.	
1 Not applicable/Don't drink	1,882	28	3,285	26	191	30	5,358	26.6	
2 No	3,993	60	8,353	65	370	59	12,716	63.0	
3 Yes	819	12	1,212	9	71	11	2,102	10.4	
Valid responses =	6,694	33	12,850	64	632	3	20,176	98.4	

Invalid responses include no response or multiple responses

19A. Within the last 30 days, what percent of students at your school used?

	Male		Female		Unknown		Total		
Percent Cigarettes	Freq.	Pct.	Freq.	Pct.	Freq.	Pct.	Freq.	Pct.	
0	110	2	145	1	33	6	288	1.4	
1-10	769	12	1,003	8	62	11	1,834	9.2	
11-20	1,076	16	1,338	11	62	11	2,476	12.4	
21-30	1,265	19	2,023	16	84	14	3,372	16.9	
31-40	1,113	17	2,003	16	76	13	3,192	16.0	
41-50	974	15	2,359	19	94	16	3,427	17.2	
51-60	432	7	1,185	9	40	7	1,657	8.3	
61-70	389	6	1,020	8	57	10	1,466	7.4	
71-80	340	5	1,108	9	48	8	1,496	7.5	
81-90	115	2	428	3	29	5	572	2.9	
91-99	23	0	88	1	4	1	115	0.6	
Valid responses =	6,606	33	12,700	64	589	3	19,895	97.0	

Invalid responses include no response or multiple responses

	Mean	Median	Std Dev	Min	Max
Male	36.28	35.00	21.19	0	98
Female	43.32	40.00	22.25	0	98
Overall	40.92	40.00	22.25	0	98



**American College Health Association-National College Health Assessment (ACHA-NCHA)
Reference Group Data Report - Fall 2007**

American College Health Association
P.O. Box 28937
Baltimore, MD 21240-8937
(410) 859-1500
www.acha.org

03/19/08

FREQUENCY REPORT

Number of Surveys (n) = 20,507 Paper & Web Surveys

19B. Within the last 30 days, what percent of students at your school used?

Percent Alcohol	Male		Female		% Used Alcohol Unknown		Total		
	Freq.	Pct.	Freq.	Pct.	Freq.	Pct.	Freq.	Pct.	
0	98	2	126	1	34	6	258	1.3	
1-10	149	2	165	1	25	4	339	1.7	
11-20	125	2	129	1	10	2	264	1.3	
21-30	243	4	303	2	21	4	567	2.9	
31-40	331	5	420	3	30	5	781	4.0	
41-50	623	10	1,130	9	63	11	1,816	9.2	
51-60	640	10	1,249	10	56	10	1,945	9.9	
61-70	1,047	16	1,827	15	72	12	2,946	15.0	
71-80	1,749	27	3,674	29	130	23	5,553	28.2	
81-90	1,214	19	2,824	22	99	17	4,137	21.0	
91-99	301	5	735	6	39	7	1,075	5.5	
Valid responses =	6,520	33	12,582	64	579	3	19,681	96.0	
Invalid responses include no response or multiple responses									
	Mean	Median	Std Dev		Min		Max		
Male	66.53	71.50	22.03		0		99		
Female	70.44	75.00	19.63		0		99		
Overall	68.89	75.00	20.82		0		99		

19C. Within the last 30 days, what percent of students at your school used?

Percent Rohypnol or GHB	Male		Female		% Used Rohypnol or GHB Unknown		Total		
	Freq.	Pct.	Freq.	Pct.	Freq.	Pct.	Freq.	Pct.	
0	999	16	1,435	12	140	25	2,574	13.4	
1-10	4,002	63	6,788	55	262	47	11,052	57.5	
11-20	771	12	1,957	16	81	15	2,809	14.6	
21-30	343	5	1,184	10	31	6	1,558	8.1	
31-40	107	2	416	3	14	3	537	2.8	
41-50	111	2	331	3	18	3	460	2.4	
51-60	22	0	83	1	3	1	108	0.6	
61-70	6	0	41	0	4	1	51	0.3	
71-80	10	0	35	0	2	0	47	0.2	
81-90	8	0	11	0	0	0	19	0.1	
91-99	0	0	2	0	0	0	2	0.0	
Valid responses =	6,379	33	12,283	64	555	3	19,217	93.7	
Invalid responses include no response or multiple responses									
	Mean	Median	Std Dev		Min		Max		
Male	8.55	5.00	11.08		0		90		
Female	11.99	10.00	13.34		0		97		
Overall	10.80	5.00	12.74		0		97		



American College Health Association-National College Health Assessment (ACHA-NCHA) Reference Group Data Report - Fall 2007

American College Health Association
P.O. Box 28937
Baltimore, MD 21240-8937
(410) 859-1500
www.acha.org

03/19/08

FREQUENCY REPORT

Number of Surveys (n) = 20,507 Paper & Web Surveys

20. Within the last 12 months, with how many partners, if any, have you had sex (oral, vaginal, or anal)?

Partners	Male		Female		Unknown		Total		
	Freq.	Pct.	Freq.	Pct.	Freq.	Pct.	Freq.	Pct.	
0	2,131	32	3,956	31	205	35	6,292	31.4	
1	2,760	42	6,086	48	228	39	9,074	45.3	
2	663	10	1,299	10	63	11	2,025	10.1	
3	398	6	645	5	26	4	1,069	5.3	
4	242	4	329	3	13	2	584	2.9	
5	139	2	189	2	15	3	343	1.7	
6	80	1	103	1	3	1	186	0.9	
7	45	1	58	1	4	1	107	0.5	
8	38	1	46	0	4	1	88	0.4	
GE 9	146	2	100	1	26	4	272	1.4	
Valid responses =	6,642	33	12,811	64	587	3	20,040	97.7	

Invalid responses include no response or multiple responses

	Mean	Median	Std Dev	Min	Max
Male	1.67	1.00	4.09	0	89
Female	1.25	1.00	2.45	0	90
Overall	1.41	1.00	3.23	0	90

21. Within the last 12 months, were your sexual partner(s), if any,

	Male		Female		Unknown		Total		
	Freq.	Pct.	Freq.	Pct.	Freq.	Pct.	Freq.	Pct.	
1 N/A	2,057	31	3,856	30	188	33	6,101	30.6	
2 Male	204	3	8,542	67	192	34	8,938	44.8	
3 Female	4,280	65	210	2	181	32	4,671	23.4	
4 Both male and female	67	1	164	1	9	2	240	1.2	
Valid responses =	6,608	33	12,772	64	570	3	19,950	97.3	

Invalid responses include no response or multiple responses

22. Within the last 12 months, with how many partners do you think the typical student at your school has had sex (oral, vaginal, or anal)?

Partners	Male		Female		Unknown		Total		
	Freq.	Pct.	Freq.	Pct.	Freq.	Pct.	Freq.	Pct.	
0	283	4	363	3	34	6	680	3.5	
1	1,086	17	1,505	12	65	12	2,656	13.5	
2	1,886	29	3,625	29	143	25	5,654	28.7	
3	1,570	24	3,358	27	113	20	5,041	25.6	
4	558	9	1,204	10	50	9	1,812	9.2	
5	527	8	1,393	11	65	12	1,985	10.1	
6	164	3	334	3	13	2	511	2.6	
7	64	1	155	1	8	1	227	1.2	
8	60	1	130	1	7	1	197	1.0	
GE 9	334	5	519	4	65	12	918	4.7	
Valid responses =	6,532	33	12,586	64	563	3	19,681	96.0	

Invalid responses include no response or multiple responses

	Mean	Median	Std Dev	Min	Max
Male	3.64	2.50	6.76	0	98
Female	3.60	3.00	5.58	0	97
Overall	3.67	3.00	6.28	0	98



American College Health Association-National College Health Assessment (ACHA-NCHA) Reference Group Data Report - Fall 2007

American College Health Association

P.O. Box 28937

Baltimore, MD 21240-8937

(410) 859-1500

www.acha.org

03/19/08

FREQUENCY REPORT

Number of Surveys (n) = 20,507 Paper & Web Surveys

23A. Within the last 30 days, if you are sexually active, how many times did you have Oral sex?

	Male		Female		Unknown		Total		
	Freq.	Pct.	Freq.	Pct.	Freq.	Pct.	Freq.	Pct.	
1 Never did this sexual activity	1,972	30	4,060	32	192	33	6,224	31.3	
2 Have not done this during last	1,785	27	3,245	26	146	25	5,176	26.0	
3 1-2 times	1,154	17	2,216	17	92	16	3,462	17.4	
4 3-4 times	630	10	1,229	10	46	8	1,905	9.6	
5 5-6 times	342	5	685	5	31	5	1,058	5.3	
6 7-8 times	200	3	435	3	15	3	650	3.3	
7 9-10 times	142	2	294	2	12	2	448	2.3	
8 11 or more times	403	6	538	4	45	8	986	5.0	
Valid responses =	6,628	33	12,702	64	579	3	19,909	97.1	

Invalid responses include no response or multiple responses

23B. Within the last 30 days, if you are sexually active, how many times did you have Vaginal intercourse?

	Male		Female		Unknown		Total		
	Freq.	Pct.	Freq.	Pct.	Freq.	Pct.	Freq.	Pct.	
1 Never did this sexual activity	2,125	32	4,028	32	194	33	6,347	31.9	
2 Have not done this during last	1,437	22	2,189	17	100	17	3,726	18.7	
3 1-2 times	656	10	1,356	11	58	10	2,070	10.4	
4 3-4 times	508	8	1,064	8	50	9	1,622	8.2	
5 5-6 times	426	6	917	7	44	8	1,387	7.0	
6 7-8 times	326	5	751	6	30	5	1,107	5.6	
7 9-10 times	295	5	701	6	22	4	1,018	5.1	
8 11 or more times	847	13	1,689	13	84	14	2,620	13.2	
Valid responses =	6,620	33	12,695	64	582	3	19,897	97.0	

Invalid responses include no response or multiple responses

23C. Within the last 30 days, if you are sexually active, how many times did you have Anal intercourse?

	Male		Female		Unknown		Total		
	Freq.	Pct.	Freq.	Pct.	Freq.	Pct.	Freq.	Pct.	
1 Never did this sexual activity	4,668	71	9,838	78	407	71	14,913	75.2	
2 Have not done this during last	1,508	23	2,291	18	118	21	3,917	19.7	
3 1-2 times	250	4	400	3	18	3	668	3.4	
4 3-4 times	67	1	71	1	5	1	143	0.7	
5 5-6 times	32	1	13	0	7	1	52	0.3	
6 7-8 times	22	0	20	0	0	0	42	0.2	
7 9-10 times	8	0	7	0	1	0	16	0.1	
8 11 or more times	48	1	22	0	14	3	84	0.4	
Valid responses =	6,603	33	12,662	64	570	3	19,835	96.7	

Invalid responses include no response or multiple responses

24A. How many times within the last 30 days do you think the typical student at your school has had:**Oral sex?**

	Male		Female		Unknown		Total		
	Freq.	Pct.	Freq.	Pct.	Freq.	Pct.	Freq.	Pct.	
1 0 times	557	9	698	6	67	12	1,322	6.7	
2 1-2 times	2,257	34	3,421	27	169	30	5,847	29.7	
3 3-4 times	1,699	26	3,425	27	130	23	5,254	26.7	
4 5-6 times	1,009	15	2,309	18	82	15	3,400	17.3	
5 7-8 times	446	7	1,190	10	36	6	1,672	8.5	
6 9-10 times	234	4	618	5	24	4	876	4.4	
7 11 or more times	356	5	911	7	55	10	1,322	6.7	
Valid responses =	6,558	33	12,572	64	563	3	19,693	96.0	

Invalid responses include no response or multiple responses



American College Health Association-National College Health Assessment (ACHA-NCHA) Reference Group Data Report - Fall 2007

American College Health Association

P.O. Box 28937

Baltimore, MD 21240-8937

(410) 859-1500

www.acha.org

03/19/08

FREQUENCY REPORT

Number of Surveys (n) = 20,507 Paper & Web Surveys

24B. How many times within the last 30 days do you think the typical student at your school has had: Vaginal intercourse?

	Male		Female		Unknown		Total		
	Freq.	Pct.	Freq.	Pct.	Freq.	Pct.	Freq.	Pct.	
1 0 times	483	7	540	4	60	11	1,083	5.5	
2 1-2 times	1,858	28	2,343	19	116	21	4,317	21.9	
3 3-4 times	1,655	25	2,856	23	125	22	4,636	23.6	
4 5-6 times	1,138	17	2,602	21	95	17	3,835	19.5	
5 7-8 times	577	9	1,642	13	58	10	2,277	11.6	
6 9-10 times	347	5	1,130	9	41	7	1,518	7.7	
7 11 or more times	500	8	1,445	12	72	13	2,017	10.2	
Valid responses =	6,558	33	12,558	64	567	3	19,683	96.0	

Invalid responses include no response or multiple responses

24C. How many times within the last 30 days do you think the typical student at your school has had: Anal intercourse?

	Male		Female		Unknown		Total		
	Freq.	Pct.	Freq.	Pct.	Freq.	Pct.	Freq.	Pct.	
1 0 times	2,710	42	4,250	34	202	36	7,162	36.5	
2 1-2 times	2,656	41	5,472	44	205	36	8,333	42.5	
3 3-4 times	598	9	1,478	12	71	13	2,147	11.0	
4 5-6 times	242	4	670	5	31	6	943	4.8	
5 7-8 times	99	2	243	2	11	2	353	1.8	
6 9-10 times	47	1	133	1	7	1	187	1.0	
7 11 or more times	170	3	265	2	36	6	471	2.4	
Valid responses =	6,522	33	12,511	64	563	3	19,596	95.6	

Invalid responses include no response or multiple responses

25A. Within the last 30 days, if you are sexually active, how often did you or your partner(s) use a condom during Oral sex?

	Male		Female		Unknown		Total		
	Freq.	Pct.	Freq.	Pct.	Freq.	Pct.	Freq.	Pct.	
1 Never did this sexual activity	2,013	31	4,113	33	182	34	6,308	32.2	
2 Have not done this during last	1,452	22	2,646	21	90	17	4,188	21.4	
3 Never	2,736	42	5,176	41	210	39	8,122	41.5	
4 Rarely	130	2	242	2	18	3	390	2.0	
5 Sometimes	51	1	101	1	6	1	158	0.8	
6 Mostly	39	1	52	0	6	1	97	0.5	
7 Always	98	2	180	1	26	5	304	1.6	
Valid responses =	6,519	33	12,510	64	538	3	19,567	95.4	

Invalid responses include no response or multiple responses

25B. Within the last 30 days, if you are sexually active, how often did you or your partner(s) use a condom during Vaginal intercourse?

	Male		Female		Unknown		Total		
	Freq.	Pct.	Freq.	Pct.	Freq.	Pct.	Freq.	Pct.	
1 Never did this sexual activity	2,118	33	4,017	32	179	33	6,314	32.2	
2 Have not done this during last	1,237	19	1,973	16	71	13	3,281	16.7	
3 Never	932	14	2,461	20	80	15	3,473	17.7	
4 Rarely	236	4	496	4	24	4	756	3.9	
5 Sometimes	288	4	548	4	27	5	863	4.4	
6 Mostly	517	8	815	7	46	8	1,378	7.0	
7 Always	1,198	18	2,221	18	120	22	3,539	18.1	
Valid responses =	6,526	33	12,531	64	547	3	19,604	95.6	

Invalid responses include no response or multiple responses



**American College Health Association-National College Health Assessment (ACHA-NCHA)
Reference Group Data Report - Fall 2007**

American College Health Association
P.O. Box 28937
Baltimore, MD 21240-8937
(410) 859-1500
www.acha.org

03/19/08

FREQUENCY REPORT

Number of Surveys (n) = 20,507 Paper & Web Surveys

25C. Within the last 30 days, if you are sexually active, how often did you or your partner(s) use a condom during Anal intercourse?

	Male		Female		Unknown		Total		
	Freq.	Pct.	Freq.	Pct.	Freq.	Pct.	Freq.	Pct.	
1 Never did this sexual activity	4,420	68	9,356	75	361	67	14,137	72.2	
2 Have not done this during last	1,264	19	1,942	16	72	13	3,278	16.8	
3 Never	424	7	928	7	54	10	1,406	7.2	
4 Rarely	49	1	47	0	7	1	103	0.5	
5 Sometimes	68	1	40	0	6	1	114	0.6	
6 Mostly	70	1	33	0	10	2	113	0.6	
7 Always	217	3	173	1	29	5	419	2.1	
Valid responses =	6,512	33	12,519	64	539	3	19,570	95.4	

Invalid responses include no response or multiple responses

26A. Within the last 30 days, how often do you think the typical student at your school has used a condom during Oral sex?

	Male		Female		Unknown		Total		
	Freq.	Pct.	Freq.	Pct.	Freq.	Pct.	Freq.	Pct.	
1 Typical student at my school	399	6	542	4	42	8	983	5.0	
2 Never	2,947	45	4,595	37	225	41	7,767	39.6	
3 Rarely	1,857	28	4,194	33	116	21	6,167	31.4	
4 Sometimes	758	12	2,012	16	95	17	2,865	14.6	
5 Mostly	471	7	1,030	8	54	10	1,555	7.9	
6 Always	97	2	170	1	19	3	286	1.5	
Valid responses =	6,529	33	12,543	64	551	3	19,623	95.7	

Invalid responses include no response or multiple responses

26B. Within the last 30 days, how often do you think the typical student at your school has used a condom during Vaginal sex?

	Male		Female		Unknown		Total		
	Freq.	Pct.	Freq.	Pct.	Freq.	Pct.	Freq.	Pct.	
1 Typical student at my school	324	5	396	3	38	7	758	3.9	
2 Never	84	1	130	1	18	3	232	1.2	
3 Rarely	329	5	759	6	45	8	1,133	5.8	
4 Sometimes	1,840	28	4,086	33	163	29	6,089	31.0	
5 Mostly	3,530	54	6,525	52	236	43	10,291	52.3	
6 Always	433	7	674	5	54	10	1,161	5.9	
Valid responses =	6,540	33	12,570	64	554	3	19,664	95.9	

Invalid responses include no response or multiple responses

26C. Within the last 30 days, how often do you think the typical student at your school has used a condom during Anal sex?

	Male		Female		Unknown		Total		
	Freq.	Pct.	Freq.	Pct.	Freq.	Pct.	Freq.	Pct.	
1 Typical student at my school	1,706	26	3,067	25	126	23	4,899	25.0	
2 Never	424	7	915	7	60	11	1,399	7.1	
3 Rarely	870	13	2,133	17	76	14	3,079	15.7	
4 Sometimes	1,479	23	3,227	26	137	25	4,843	24.7	
5 Mostly	1,566	24	2,655	21	116	21	4,337	22.1	
6 Always	469	7	518	4	39	7	1,026	5.2	
Valid responses =	6,514	33	12,515	64	554	3	19,583	95.5	

Invalid responses include no response or multiple responses



American College Health Association-National College Health Assessment (ACHA-NCHA) Reference Group Data Report - Fall 2007

American College Health Association
P.O. Box 28937
Baltimore, MD 21240-8937
(410) 859-1500
www.acha.org

03/19/08

FREQUENCY REPORT

Number of Surveys (n) = 20,507 Paper & Web Surveys

27A. If you are sexually active, did you use a condom the last time you had

	Male		Female		Unknown		Total		
	Freq.	Pct.	Freq.	Pct.	Freq.	Pct.	Freq.	Pct.	
1 Never did this sexual activity	1,964	30	4,139	33	210	37	6,313	32.0	
2 No	4,310	66	7,960	63	312	55	12,582	63.8	
3 Yes	231	4	359	3	32	6	622	3.2	
4 Don't know/Don't remember	80	1	111	1	10	2	201	1.0	
Valid responses =	6,585	33	12,569	64	564	3	19,718	96.2	

Invalid responses include no response or multiple responses

27B. If you are sexually active, did you use a condom the last time you had:

	Male		Female		Unknown		Total		
	Freq.	Pct.	Freq.	Pct.	Freq.	Pct.	Freq.	Pct.	
1 Never did this sexual activity	2,122	32	4,006	32	197	35	6,325	32.0	
2 No	1,917	29	4,392	35	155	27	6,464	32.7	
3 Yes	2,465	37	4,081	32	200	35	6,746	34.2	
4 Don't know/Don't remember	85	1	107	1	13	2	205	1.0	
Valid responses =	6,589	33	12,586	64	565	3	19,740	96.3	

Invalid responses include no response or multiple responses

27C. If you are sexually active, did you use a condom the last time you had:

	Male		Female		Unknown		Total		
	Freq.	Pct.	Freq.	Pct.	Freq.	Pct.	Freq.	Pct.	
1 Never did this sexual activity	5,042	77	10,251	82	422	76	15,715	79.9	
2 No	943	14	1,747	14	73	13	2,763	14.0	
3 Yes	489	7	453	4	49	9	991	5.0	
4 Don't know/Don't remember	102	2	83	1	15	3	200	1.0	
Valid responses =	6,576	33	12,534	64	559	3	19,669	95.9	

Invalid responses include no response or multiple responses

28. If you have had vaginal intercourse, what method did you or your partner use to prevent pregnancy the last time?

	Male		Female		Unknown		Total		
	Freq.	Pct.	Freq.	Pct.	Freq.	Pct.	Freq.	Pct.	
1 Have not had vaginal	1,596	24	3,267	25	148	20	5,011	24.4	
2 Birth control pills	2,296	34	4,567	35	150	20	7,013	34.2	
3 Depo Provera (shots)	77	1	176	1	9	1	262	1.3	
4 Norplant (implant)	42	1	49	0	4	1	95	0.5	
5 Condoms (male or female)	2,633	39	4,496	35	219	30	7,348	35.8	
6 Diaphragm/Cervical	43	1	46	0	1	0	90	0.4	
7 Spermicide (e.g. foam)	237	4	261	2	7	1	505	2.5	
8 Fertility awareness	165	2	319	3	9	1	493	2.4	
9 Withdrawal	981	15	2,141	17	69	9	3,191	15.6	
10 Other method	300	4	943	7	28	4	1,271	6.2	
11 Nothing	471	7	764	6	54	7	1,289	6.3	

Valid responses = all responses and blanks: since multiple responses were possible, more than 100% may be included

29. Within the last 12 months, if you are sexually active, have you or your partner(s) used emergency contraception ("morning after pill")?

	Male		Female		Unknown		Total		
	Freq.	Pct.	Freq.	Pct.	Freq.	Pct.	Freq.	Pct.	
1 No	3,655	56	7,585	60	302	55	11,542	58.4	
2 Yes	475	7	1,081	9	54	10	1,610	8.1	
3 Don't know	472	7	65	1	31	6	568	2.9	
4 Not sexually active	1,945	30	3,932	31	163	30	6,040	30.6	
Valid responses =	6,547	33	12,663	64	550	3	19,760	96.4	

Invalid responses include no response or multiple responses



American College Health Association-National College Health Assessment (ACHA-NCHA) Reference Group Data Report - Fall 2007

American College Health Association
P.O. Box 28937
Baltimore, MD 21240-8937
(410) 859-1500
www.acha.org

03/19/08

FREQUENCY REPORT

Number of Surveys (n) = 20,507 Paper & Web Surveys

30. Within the last 12 months, have you unintentionally become pregnant or gotten someone else pregnant?

	Male		Female		Unknown		Total	
	Freq.	Pct.	Freq.	Pct.	Freq.	Pct.	Freq.	Pct.
Not had vaginal intercourse in	1,892	29	3,762	30	155	28	5,809	29.3
1 No	4,379	67	8,613	68	357	65	13,349	67.4
2 Yes	130	2	221	2	20	4	371	1.9
3 Don't know	178	3	96	1	17	3	291	1.5
Valid responses =	6,579	33	12,692	64	549	3	19,820	96.6

Invalid responses include no response or multiple responses

31. Have you ever been tested for HIV infection?

	Male		Female		Unknown		Total	
	Freq.	Pct.	Freq.	Pct.	Freq.	Pct.	Freq.	Pct.
1 No	4,661	70	8,364	65	358	66	13,383	66.9
2 Yes	1,619	24	3,804	30	150	28	5,573	27.8
3 Don't know	378	6	642	5	37	7	1,057	5.3
Valid responses =	6,658	33	12,810	64	545	3	20,013	97.6

Invalid responses include no response or multiple responses

32. Which of the following best describes you?

	Male		Female		Unknown		Total	
	Freq.	Pct.	Freq.	Pct.	Freq.	Pct.	Freq.	Pct.
1 Heterosexual	6,226	94	12,053	94	378	89	18,657	94.0
2 Gay/Lesbian	170	3	134	1	7	2	311	1.6
3 Bisexual	122	2	362	3	9	2	493	2.5
4 Transgendered	19	0	13	0	10	2	42	0.2
5 Unsure	109	2	226	2	19	5	354	1.8
Valid responses =	6,646	33	12,788	64	423	2	19,857	96.8

Invalid responses include no response or multiple responses

33. If you have a credit card(s) how much total credit card debt did you carry last month?

That is, what was the total unpaid balance on all of your credit cards (that you are responsible for paying)?

	Male		Female		Unknown		Total	
	Freq.	Pct.	Freq.	Pct.	Freq.	Pct.	Freq.	Pct.
1 None, I don't have credit	2,641	40	5,463	43	210	49	8,314	42.1
2 None, I pay the full amount	2,090	32	3,235	26	91	21	5,416	27.4
3 \$1 - \$99	175	3	331	3	11	3	517	2.6
4 \$100 - \$249	226	3	529	4	13	3	768	3.9
5 \$250 - \$499	268	4	528	4	18	4	814	4.1
6 \$500 - \$999	297	5	598	5	22	5	917	4.6
7 \$1,000 - \$1,999	259	4	594	5	14	3	867	4.4
8 \$2,000 - \$2,999	149	2	349	3	11	3	509	2.6
9 \$3,000 - \$3,999	95	1	239	2	9	2	343	1.7
10 \$4,000 - \$4,999	67	1	193	2	6	1	266	1.3
11 \$5,000 - \$5,999	75	1	149	1	5	1	229	1.2
12 \$6,000 or more	271	4	484	4	17	4	772	3.9
Valid responses =	6,613	34	12,692	64	427	2	19,732	96.2

Invalid responses include no response or multiple responses

34. What is your approximate cumulative grade average?

	Male		Female		Unknown		Total	
	Freq.	Pct.	Freq.	Pct.	Freq.	Pct.	Freq.	Pct.
1 A	1,931	29	4,501	35	134	32	6,566	33.2
2 B	3,123	47	5,874	46	195	46	9,192	46.4
3 C	1,053	16	1,493	12	64	15	2,610	13.2
4 D/F	240	4	337	3	6	1	583	2.9
5 N/A	282	4	540	4	26	6	848	4.3
Valid responses =	6,629	33	12,745	64	425	2	19,799	96.5

Invalid responses include no response or multiple responses



American College Health Association-National College Health Assessment (ACHA-NCHA) Reference Group Data Report - Fall 2007

American College Health Association
P.O. Box 28937
Baltimore, MD 21240-8937
(410) 859-1500
www.acha.org

03/19/08

FREQUENCY REPORT

Number of Surveys (n) = 20,507 Paper & Web Surveys

35. How do you describe your weight?

	Male		Female		Unknown		Total	
	Freq.	Pct.	Freq.	Pct.	Freq.	Pct.	Freq.	Pct.
1 Very underweight	70	1	68	1	2	0	140	0.7
2 Slightly underweight	913	14	857	7	55	10	1,825	9.1
3 About the right weight	3,471	52	6,623	52	299	55	10,393	51.7
4 Slightly overweight	1,972	30	4,498	35	168	31	6,638	33.0
5 Very overweight	250	4	818	6	21	4	1,089	5.4
Valid responses =	6,676	33	12,864	64	545	3	20,085	97.9

Invalid responses include no response or multiple responses

36. Are you trying to do any of the following about your weight?

	Male		Female		Unknown		Total	
	Freq.	Pct.	Freq.	Pct.	Freq.	Pct.	Freq.	Pct.
1 I am not trying to do anything	1,408	21	1,644	13	97	18	3,149	15.7
2 Stay the same weight	1,691	25	3,307	26	148	27	5,146	25.6
3 Lose weight	2,383	36	7,636	59	237	44	10,256	51.1
4 Gain weight	1,184	18	270	2	63	12	1,517	7.6
Valid responses =	6,666	33	12,857	64	545	3	20,068	97.9

Invalid responses include no response or multiple responses

37. Within the last 30 days, did you do any of the following?

	Male		Female		Unknown		Total	
	Freq.	Pct.	Freq.	Pct.	Freq.	Pct.	Freq.	Pct.
1 Exercise to lose weight	2,984	44	7,630	59	270	37	10,884	53.1
2 Diet to lose weight	1,520	22	5,285	41	165	22	6,970	34.0
3 Vomit or take laxatives to lose	47	1	360	3	17	2	424	2.1
4 Take diet pills to lose weight	135	2	599	5	19	3	753	3.7
5 I didn't do any of the above	3,398	50	4,297	33	226	31	7,921	38.6
Valid responses =								

all responses and blanks: since multiple responses were possible, more than 100% may be included.

38. How many servings of fruits and vegetables do you usually have per day?

	Male		Female		Unknown		Total	
	Freq.	Pct.	Freq.	Pct.	Freq.	Pct.	Freq.	Pct.
1 I don't eat fruits and veg.	334	5	367	3	33	6	734	3.7
2 1-2	4,222	63	7,648	60	329	62	12,199	60.8
3 3-4	1,699	26	4,002	31	131	25	5,832	29.1
4 5 or more	411	6	838	7	40	8	1,289	6.4
Valid responses =	6,666	33	12,855	64	533	3	20,054	97.8

Invalid responses include no response or multiple responses

39A. On how many of the past 7 days did you:

Participate in vigorous exercise for at least 20 minutes or moderate exercise for at least 30 minutes?

	Male		Female		Unknown		Total	
	Freq.	Pct.	Freq.	Pct.	Freq.	Pct.	Freq.	Pct.
1 0 days	1,596	24	3,889	30	166	31	5,651	28.1
2 1 day	1,029	15	1,948	15	81	15	3,058	15.2
3 2 days	1,135	17	2,207	17	98	18	3,440	17.1
4 3 days	1,016	15	1,983	15	72	13	3,071	15.3
5 4 days	647	10	1,082	8	40	7	1,769	8.8
6 5 days	652	10	926	7	31	6	1,609	8.0
7 6 days	342	5	503	4	21	4	866	4.3
8 7 days	283	4	355	3	30	6	668	3.3
Valid responses =	6,700	33	12,893	64	539	3	20,132	98.2

Invalid responses include no response or multiple responses



American College Health Association-National College Health Assessment (ACHA-NCHA) Reference Group Data Report - Fall 2007

American College Health Association
P.O. Box 28937
Baltimore, MD 21240-8937
(410) 859-1500
www.acha.org

03/19/08

FREQUENCY REPORT

Number of Surveys (n) = 20,507 Paper & Web Surveys

39B. On how many of the past 7 days did you:**Do exercises to strength or tone your muscles, such as push-ups, sit-ups, or weight lifting?**

	Male		Female		Unknown		Total		
	Freq.	Pct.	Freq.	Pct.	Freq.	Pct.	Freq.	Pct.	
1 0 days	2,372	36	5,888	46	227	42	8,487	42.3	
2 1 day	880	13	1,867	15	79	15	2,826	14.1	
3 2 days	940	14	1,890	15	77	14	2,907	14.5	
4 3 days	956	14	1,496	12	62	11	2,514	12.5	
5 4 days	548	8	738	6	38	7	1,324	6.6	
6 5 days	513	8	526	4	23	4	1,062	5.3	
7 6 days	244	4	237	2	12	2	493	2.5	
8 7 days	237	4	204	2	24	4	465	2.3	
Valid responses =	6,690	33	12,846	64	542	3	20,078	97.9	

Invalid responses include no response or multiple responses

39C. On how many of the past 7 days did you:**Get enough sleep so that you felt rested when you woke up in the morning?**

	Male		Female		Unknown		Total		
	Freq.	Pct.	Freq.	Pct.	Freq.	Pct.	Freq.	Pct.	
1 0 days	721	11	1,626	13	91	17	2,438	12.1	
2 1 day	670	10	1,468	11	82	15	2,220	11.0	
3 2 days	1,109	17	2,174	17	93	17	3,376	16.8	
4 3 days	1,220	18	2,111	16	95	18	3,426	17.0	
5 4 days	1,077	16	1,968	15	61	11	3,106	15.4	
6 5 days	924	14	1,795	14	52	10	2,771	13.8	
7 6 days	436	7	850	7	34	6	1,320	6.6	
8 7 days	536	8	891	7	34	6	1,461	7.3	
Valid responses =	6,693	33	12,883	64	542	3	20,118	98.1	

Invalid responses include no response or multiple responses

40A. Within the last 12 months how many times have you:**Felt things were hopeless**

	Male		Female		Unknown		Total		
	Freq.	Pct.	Freq.	Pct.	Freq.	Pct.	Freq.	Pct.	
1 Never	3,044	45	4,488	35	229	43	7,761	38.5	
2 1 - 2 times	1,672	25	3,398	26	121	23	5,191	25.8	
3 3 - 4 times	644	10	1,608	13	57	11	2,309	11.5	
4 5 - 6 times	393	6	1,036	8	31	6	1,460	7.2	
5 7 - 8 times	235	4	598	5	27	5	860	4.3	
6 9 - 10 times	141	2	435	3	21	4	597	3.0	
7 11 or more times	599	9	1,326	10	49	9	1,974	9.8	
Valid responses =	6,728	33	12,889	64	535	3	20,152	98.3	

Invalid responses include no response or multiple responses

40B. Within the last 12 months how many times have you:**Felt overwhelmed by all you had to do**

	Male		Female		Unknown		Total		
	Freq.	Pct.	Freq.	Pct.	Freq.	Pct.	Freq.	Pct.	
1 Never	972	15	643	5	75	14	1,690	8.4	
2 1 - 2 times	1,540	23	1,928	15	132	25	3,600	17.9	
3 3 - 4 times	1,098	16	1,878	15	71	13	3,047	15.1	
4 5 - 6 times	824	12	1,801	14	64	12	2,689	13.4	
5 7 - 8 times	514	8	1,339	10	45	8	1,898	9.4	
6 9 - 10 times	438	7	1,282	10	35	7	1,755	8.7	
7 11 or more times	1,334	20	4,014	31	113	21	5,461	27.1	
Valid responses =	6,720	33	12,885	64	535	3	20,140	98.2	

Invalid responses include no response or multiple responses



American College Health Association-National College Health Assessment (ACHA-NCHA) Reference Group Data Report - Fall 2007

American College Health Association
P.O. Box 28937
Baltimore, MD 21240-8937
(410) 859-1500
www.acha.org

03/19/08

FREQUENCY REPORT

Number of Surveys (n) = 20,507 Paper & Web Surveys

40C. Within the last 12 months how many times have you:**Felt exhausted (not from physical activity)**

	Male		Female		Unknown		Total		
	Freq.	Pct.	Freq.	Pct.	Freq.	Pct.	Freq.	Pct.	
1 Never	1,193	18	974	8	95	18	2,262	11.2	
2 1 - 2 times	1,500	22	2,293	18	109	20	3,902	19.4	
3 3 - 4 times	1,051	16	1,962	15	80	15	3,093	15.4	
4 5 - 6 times	728	11	1,636	13	66	12	2,430	12.1	
5 7 - 8 times	506	8	1,351	11	51	10	1,908	9.5	
6 9 - 10 times	393	6	1,204	9	36	7	1,633	8.1	
7 11 or more times	1,336	20	3,465	27	100	19	4,901	24.3	
Valid responses =	6,707	33	12,885	64	537	3	20,129	98.2	

Invalid responses include no response or multiple responses

40D. Within the last 12 months how many times have you:**Felt very sad**

	Male		Female		Unknown		Total		
	Freq.	Pct.	Freq.	Pct.	Freq.	Pct.	Freq.	Pct.	
1 Never	2,181	33	2,390	19	149	28	4,720	23.5	
2 1 - 2 times	2,004	30	3,761	29	149	28	5,914	29.4	
3 3 - 4 times	834	12	1,868	15	76	14	2,778	13.8	
4 5 - 6 times	469	7	1,340	10	48	9	1,857	9.2	
5 7 - 8 times	308	5	940	7	28	5	1,276	6.3	
6 9 - 10 times	213	3	714	6	25	5	952	4.7	
7 11 or more times	704	11	1,860	14	57	11	2,621	13.0	
Valid responses =	6,713	33	12,873	64	532	3	20,118	98.1	

Invalid responses include no response or multiple responses

40E. Within the last 12 months how many times have you:**Felt so depressed that it was difficult to function**

	Male		Female		Unknown		Total		
	Freq.	Pct.	Freq.	Pct.	Freq.	Pct.	Freq.	Pct.	
1 Never	4,170	62	6,960	54	304	57	11,434	56.8	
2 1 - 2 times	1,215	18	2,695	21	103	19	4,013	19.9	
3 3 - 4 times	398	6	952	7	25	5	1,375	6.8	
4 5 - 6 times	238	4	578	5	33	6	849	4.2	
5 7 - 8 times	146	2	411	3	23	4	580	2.9	
6 9 - 10 times	120	2	334	3	11	2	465	2.3	
7 11 or more times	430	6	955	7	34	6	1,419	7.0	
Valid responses =	6,717	33	12,885	64	533	3	20,135	98.2	

Invalid responses include no response or multiple responses.

40F. Within the last 12 months how many times have you:**Seriously considered attempting suicide**

	Male		Female		Unknown		Total		
	Freq.	Pct.	Freq.	Pct.	Freq.	Pct.	Freq.	Pct.	
1 Never	6,055	90	11,575	90	470	88	18,100	89.7	
2 1 - 2 times	423	6	876	7	34	6	1,333	6.6	
3 3 - 4 times	85	1	173	1	11	2	269	1.3	
4 5 - 6 times	53	1	87	1	10	2	150	0.7	
5 7 - 8 times	30	0	39	0	3	1	72	0.4	
6 9 - 10 times	17	0	27	0	2	0	46	0.2	
7 11 or more times	64	1	132	1	7	1	203	1.0	
Valid responses =	6,727	33	12,909	64	537	3	20,173	98.4	

Invalid responses include no response or multiple responses.



American College Health Association-National College Health Assessment (ACHA-NCHA)

Reference Group Data Report - Fall 2007

American College Health Association

P.O. Box 28937

Baltimore, MD 21240-8937

(410) 859-1500

www.acha.org

03/19/08

FREQUENCY REPORT

Number of Surveys (n) = 20,507 Paper & Web Surveys

40G. Within the last 12 months how many times have you:

Attempted suicide

	Male		Female		Unknown		Total	
	Freq.	Pct.	Freq.	Pct.	Freq.	Pct.	Freq.	Pct.
1 Never	6,592	98	12,666	98	510	95	19,768	98.2
2 1 - 2 times	68	1	170	1	11	2	249	1.2
3 3 - 4 times	13	0	17	0	2	0	32	0.2
4 5 - 6 times	11	0	14	0	5	1	30	0.1
5 7 - 8 times	4	0	6	0	0	0	10	0.0
6 9 - 10 times	6	0	3	0	3	1	12	0.1
7 11 or more times	16	0	18	0	4	1	38	0.2
Valid responses =	6,710	33	12,894	64	535	3	20,139	98.2

Invalid responses include no response or multiple responses.

41. Have you ever been diagnosed with depression?

	Male		Female		Unknown		Total	
	Freq.	Pct.	Freq.	Pct.	Freq.	Pct.	Freq.	Pct.
1 Yes	730	11	2,414	19	68	13	3,212	16.0
2 No	5,947	89	10,441	81	449	87	16,837	84.0
Valid responses =	6,677	33	12,855	64	517	3	20,049	97.8

Invalid responses include no response or multiple responses.

41A. If yes to # 41:

Have you been diagnosed with depression within the last 12 months?

	Male		Female		Unknown		Total	
	Freq.	Pct.	Freq.	Pct.	Freq.	Pct.	Freq.	Pct.
1 No	476	66	1,427	60	34	52	1,937	60.8
2 Yes	247	34	969	40	31	48	1,247	39.2
Valid responses =	723	23	2,396	75	65	2	3,184	15.5

Invalid responses include no response or multiple responses.

41B. If yes to # 41:

Are you currently in therapy for depression?

	Male		Female		Unknown		Total	
	Freq.	Pct.	Freq.	Pct.	Freq.	Pct.	Freq.	Pct.
1 No	596	83	1,777	74	37	57	2,410	75.8
2 Yes	125	17	617	26	28	43	770	24.2
Valid responses =	721	23	2,394	75	65	2	3,180	15.5

Invalid responses include no response or multiple responses.

41C. If yes to # 41:

Are you currently taking medication for depression?

	Male		Female		Unknown		Total	
	Freq.	Pct.	Freq.	Pct.	Freq.	Pct.	Freq.	Pct.
1 No	522	73	1,482	62	31	48	2,035	64.2
2 Yes	198	28	904	38	34	52	1,136	35.8
Valid responses =	720	23	2,386	75	65	2	3,171	15.5

Invalid responses include no response or multiple responses.

42A. Have you:

Been vaccinated against hepatitis B?

	Male		Female		Unknown		Total	
	Freq.	Pct.	Freq.	Pct.	Freq.	Pct.	Freq.	Pct.
1 No	824	12	1,404	11	72	14	2,300	11.4
2 Yes	4,363	65	9,113	71	335	66	13,811	68.7
3 Don't Know	1,510	23	2,382	19	99	20	3,991	19.9
Valid responses =	6,697	33	12,899	64	506	3	20,102	98.0

Invalid responses include no response or multiple responses.



American College Health Association-National College Health Assessment (ACHA-NCHA) Reference Group Data Report - Fall 2007

American College Health Association
P.O. Box 28937
Baltimore, MD 21240-8937
(410) 859-1500
www.acha.org

03/19/08

FREQUENCY REPORT

Number of Surveys (n) = 20,507 Paper & Web Surveys

42B. Have you:

Been vaccinated against meningococcal disease (meningococcal meningitis)?

	Male		Female		Unknown		Total	
	Freq.	Pct.	Freq.	Pct.	Freq.	Pct.	Freq.	Pct.
1 No	1,338	20	2,860	22	111	22	4,309	21.5
2 Yes	3,330	50	7,016	54	255	50	10,601	52.8
3 Don't Know	2,011	30	3,016	23	143	28	5,170	25.7
Valid responses =	6,679	33	12,892	64	509	3	20,080	97.9

Invalid responses include no response or multiple responses.

42C. Have you:

Been vaccinated against varicella (chicken pox)?

	Male		Female		Unknown		Total	
	Freq.	Pct.	Freq.	Pct.	Freq.	Pct.	Freq.	Pct.
1 No	1,971	30	4,792	37	141	28	6,904	34.4
2 Yes	3,676	55	6,616	51	284	57	10,576	52.7
3 Don't Know	1,037	16	1,464	11	78	16	2,579	12.9
Valid responses =	6,684	33	12,872	64	503	3	20,059	97.8

Invalid responses include no response or multiple responses.

42D. Have you:

Been vaccinated with measles, mumps, rubella (2 shots)?

	Male		Female		Unknown		Total	
	Freq.	Pct.	Freq.	Pct.	Freq.	Pct.	Freq.	Pct.
1 No	601	9	912	7	72	14	1,585	7.9
2 Yes	4,858	73	10,283	80	344	68	15,485	77.1
3 Don't Know	1,229	18	1,682	13	94	18	3,005	15.0
Valid responses =	6,688	33	12,877	64	510	3	20,075	97.9

Invalid responses include no response or multiple responses.

42E. Have you:

Been vaccinated against influenza (the flu) in the last year?

	Male		Female		Unknown		Total	
	Freq.	Pct.	Freq.	Pct.	Freq.	Pct.	Freq.	Pct.
1 No	3,820	57	8,143	63	253	50	12,216	60.9
2 Yes	2,033	30	3,650	28	186	37	5,869	29.2
3 Don't Know	837	13	1,088	8	64	13	1,989	9.9
Valid responses =	6,690	33	12,881	64	503	3	20,074	97.9

Invalid responses include no response or multiple responses.

42F. Have you:

Had a dental exam and cleaning in the last year?

	Male		Female		Unknown		Total	
	Freq.	Pct.	Freq.	Pct.	Freq.	Pct.	Freq.	Pct.
1 No	1,676	25	2,579	20	115	23	4,370	21.8
2 Yes	4,810	72	10,141	79	371	74	15,322	76.3
3 Don't Know	210	3	153	1	16	3	379	1.9
Valid responses =	6,696	33	12,873	64	502	3	20,071	97.9

Invalid responses include no response or multiple responses.



American College Health Association-National College Health Assessment (ACHA-NCHA) Reference Group Data Report - Fall 2007

American College Health Association
P.O. Box 28937
Baltimore, MD 21240-8937
(410) 859-1500
www.acha.org

03/19/08

FREQUENCY REPORT

Number of Surveys (n) = 20,507 Paper & Web Surveys

42G. Have you:

(Males) Performed testicular self exam in the last month?

	Male		Female		Unknown		Total	
	Freq.	Pct.	Freq.	Pct.	Freq.	Pct.	Freq.	Pct.
1 No	3,515	53	0	0	182	56	3,697	53.0
2 Yes	2,799	42	0	0	97	30	2,896	41.5
3 Don't Know	341	5	0	0	45	14	386	5.5
Valid responses =	6,655	95	0	0	324	5	6,979	34.0

Invalid responses include no response or multiple responses.

42H. Have you:

(Females) Performed breast self exam in the last month?

	Male		Female		Unknown		Total	
	Freq.	Pct.	Freq.	Pct.	Freq.	Pct.	Freq.	Pct.
1 No	0	0	6,744	53	183	54	6,927	52.5
2 Yes	0	0	5,969	47	133	39	6,102	46.3
3 Don't Know	0	0	135	1	24	7	159	1.2
Valid responses =	0	0	12,848	97	340	3	13,188	64.3

Invalid responses include no response or multiple responses.

42I. Have you:

(Females) had a routine gynecological exam in the last year?

	Male		Female		Unknown		Total	
	Freq.	Pct.	Freq.	Pct.	Freq.	Pct.	Freq.	Pct.
1 No	0	0	5,540	43	163	48	5,703	43.2
2 Yes	0	0	7,168	56	152	45	7,320	55.5
3 Don't Know	0	0	144	1	24	7	168	1.3
Valid responses =	0	0	12,852	97	339	3	13,191	64.3

Invalid responses include no response or multiple responses.

42J. Have you:

Had your blood pressure checked in the last 2 years?

	Male		Female		Unknown		Total	
	Freq.	Pct.	Freq.	Pct.	Freq.	Pct.	Freq.	Pct.
1 No	779	12	1,122	9	56	12	1,957	9.8
2 Yes	5,563	85	11,546	90	398	84	17,507	87.9
3 Don't Know	217	3	217	2	22	5	456	2.3
Valid responses =	6,559	33	12,885	65	476	2	19,920	97.1

Invalid responses include no response or multiple responses.

42K. Have you:

Had your cholesterol checked in the last 5 years?

	Male		Female		Unknown		Total	
	Freq.	Pct.	Freq.	Pct.	Freq.	Pct.	Freq.	Pct.
1 No	2,999	46	5,583	43	188	40	8,770	44.1
2 Yes	2,773	42	5,729	45	211	45	8,713	43.8
3 Don't Know	778	12	1,569	12	74	16	2,421	12.2
Valid responses =	6,550	33	12,881	65	473	2	19,904	97.1

Invalid responses include no response or multiple responses.



American College Health Association-National College Health Assessment (ACHA-NCHA) Reference Group Data Report - Fall 2007

American College Health Association
P.O. Box 28937
Baltimore, MD 21240-8937
(410) 859-1500
www.acha.org

03/19/08

FREQUENCY REPORT

Number of Surveys (n) = 20,507 Paper & Web Surveys

42L. Have you:

Used sunscreen daily?

	Male		Female		Unknown		Total	
	Freq.	Pct.	Freq.	Pct.	Freq.	Pct.	Freq.	Pct.
1 No	5,686	87	9,735	76	359	76	15,780	79.3
2 Yes	679	10	2,977	23	89	19	3,745	18.8
3 Don't Know	183	3	161	1	22	5	366	1.8
Valid responses =	6,548	33	12,873	65	470	2	19,891	97.0

Invalid responses include no response or multiple responses.

43A1. Within the last 12 months, have you had any of the following?

Allergy problems

	Male		Female		Unknown		Total	
	Freq.	Pct.	Freq.	Pct.	Freq.	Pct.	Freq.	Pct.
1 No	3,549	53	5,995	47	287	58	9,831	49.0
2 Yes	3,121	47	6,885	54	206	42	10,212	51.0
Valid responses =	6,670	33	12,880	64	493	2	20,043	97.7

Invalid responses include no response or multiple responses.

43A2. Within the last 12 months, have you had any of the following?

Anorexia

	Male		Female		Unknown		Total	
	Freq.	Pct.	Freq.	Pct.	Freq.	Pct.	Freq.	Pct.
1 No	6,546	99	12,577	98	474	97	19,597	98.2
2 Yes	67	1	279	2	15	3	361	1.8
Valid responses =	6,613	33	12,856	64	489	2	19,958	97.3

Invalid responses include no response or multiple responses.

43A3. Within the last 12 months, have you had any of the following?

Anxiety Disorder

	Male		Female		Unknown		Total	
	Freq.	Pct.	Freq.	Pct.	Freq.	Pct.	Freq.	Pct.
1 No	6,087	92	10,837	84	436	90	17,360	86.9
2 Yes	545	8	2,024	16	48	10	2,617	13.1
Valid responses =	6,632	33	12,861	64	484	2	19,977	97.4

Invalid responses include no response or multiple responses.

43A4. Within the last 12 months, have you had any of the following?

Asthma

	Male		Female		Unknown		Total	
	Freq.	Pct.	Freq.	Pct.	Freq.	Pct.	Freq.	Pct.
1 No	5,998	91	11,104	86	427	88	17,529	87.9
2 Yes	620	9	1,741	14	56	12	2,417	12.1
Valid responses =	6,618	33	12,845	64	483	2	19,946	97.3

Invalid responses include no response or multiple responses.

43A5. Within the last 12 months, have you had any of the following?

Bulimia

	Male		Female		Unknown		Total	
	Freq.	Pct.	Freq.	Pct.	Freq.	Pct.	Freq.	Pct.
1 No	6,554	99	12,483	97	467	98	19,504	98.0
2 Yes	50	1	345	3	10	2	405	2.0
Valid responses =	6,604	33	12,828	64	477	2	19,909	97.1

Invalid responses include no response or multiple responses.



American College Health Association-National College Health Assessment (ACHA-NCHA)

Reference Group Data Report - Fall 2007

American College Health Association

P.O. Box 28937

Baltimore, MD 21240-8937

(410) 859-1500

www.acha.org

03/19/08

FREQUENCY REPORT

Number of Surveys (n) = 20,507 Paper & Web Surveys

43A6. Within the last 12 months, have you had any of the following?

Chronic Fatigue Syndrome

	Male		Female		Unknown		Total	
	Freq.	Pct.	Freq.	Pct.	Freq.	Pct.	Freq.	Pct.
1 No	6,441	97	12,336	96	472	98	19,249	96.6
2 Yes	174	3	490	4	10	2	674	3.4
Valid responses =	6,615	33	12,826	64	482	2	19,923	97.2

Invalid responses include no response or multiple responses.

43A7. Within the last 12 months, have you had any of the following?

Depression

	Male		Female		Unknown		Total	
	Freq.	Pct.	Freq.	Pct.	Freq.	Pct.	Freq.	Pct.
1 No	5,584	84	10,191	79	404	84	16,179	81.1
2 Yes	1,043	16	2,655	21	79	16	3,777	18.9
Valid responses =	6,627	33	12,846	64	483	2	19,956	97.3

Invalid responses include no response or multiple responses.

43A8. Within the last 12 months, have you had any of the following?

Diabetes

	Male		Female		Unknown		Total	
	Freq.	Pct.	Freq.	Pct.	Freq.	Pct.	Freq.	Pct.
1 No	6,524	99	12,654	99	465	97	19,643	98.5
2 Yes	89	1	186	1	16	3	291	1.5
Valid responses =	6,613	33	12,840	64	481	2	19,934	97.2

Invalid responses include no response or multiple responses.

43A9. Within the last 12 months, have you had any of the following?

Endometriosis

	Male		Female		Unknown		Total	
	Freq.	Pct.	Freq.	Pct.	Freq.	Pct.	Freq.	Pct.
1 No	6,574	100	12,606	98	471	98	19,651	98.7
2 Yes	23	0	223	2	8	2	254	1.3
Valid responses =	6,597	33	12,829	64	479	2	19,905	97.1

Invalid responses include no response or multiple responses.

43A10. Within the last 12 months, have you had any of the following?

Genital herpes

	Male		Female		Unknown		Total	
	Freq.	Pct.	Freq.	Pct.	Freq.	Pct.	Freq.	Pct.
1 No	6,538	99	12,684	99	474	99	19,696	99.0
2 Yes	51	1	148	1	5	1	204	1.0
Valid responses =	6,589	33	12,832	64	479	2	19,900	97.0

Invalid responses include no response or multiple responses.

43A11. Within the last 12 months, have you had any of the following?

Genital warts/HPV

	Male		Female		Unknown		Total	
	Freq.	Pct.	Freq.	Pct.	Freq.	Pct.	Freq.	Pct.
1 No	6,520	99	12,458	97	473	99	19,451	97.7
2 Yes	84	1	367	3	6	1	457	2.3
Valid responses =	6,604	33	12,825	64	479	2	19,908	97.1

Invalid responses include no response or multiple responses.



American College Health Association-National College Health Assessment (ACHA-NCHA)

Reference Group Data Report - Fall 2007

American College Health Association

P.O. Box 28937

Baltimore, MD 21240-8937

(410) 859-1500

www.acha.org

03/19/08

FREQUENCY REPORT

Number of Surveys (n) = 20,507 Paper & Web Surveys

43A12. Within the last 12 months, have you had any of the following?

Hepatitis B or C

	Male		Female		Unknown		Total	
	Freq.	Pct.	Freq.	Pct.	Freq.	Pct.	Freq.	Pct.
1 No	6,563	99	12,775	100	469	98	19,807	99.5
2 Yes	40	1	42	0	8	2	90	0.5
Valid responses =	6,603	33	12,817	64	477	2	19,897	97.0

Invalid responses include no response or multiple responses.

43A13. Within the last 12 months, have you had any of the following?

High blood pressure

	Male		Female		Unknown		Total	
	Freq.	Pct.	Freq.	Pct.	Freq.	Pct.	Freq.	Pct.
1 No	6,031	91	12,161	95	456	95	18,648	93.7
2 Yes	578	9	653	5	23	5	1,254	6.3
Valid responses =	6,609	33	12,814	64	479	2	19,902	97.0

Invalid responses include no response or multiple responses.

43A14. Within the last 12 months, have you had any of the following?

High cholesterol

	Male		Female		Unknown		Total	
	Freq.	Pct.	Freq.	Pct.	Freq.	Pct.	Freq.	Pct.
1 No	6,308	96	12,254	96	451	95	19,013	95.6
2 Yes	294	5	555	4	26	6	875	4.4
Valid responses =	6,602	33	12,809	64	477	2	19,888	97.0

Invalid responses include no response or multiple responses.

43A15. Within the last 12 months, have you had any of the following?

HIV infection

	Male		Female		Unknown		Total	
	Freq.	Pct.	Freq.	Pct.	Freq.	Pct.	Freq.	Pct.
1 No	6,547	100	12,749	100	472	99	19,768	99.7
2 Yes	28	0	28	0	3	1	59	0.3
Valid responses =	6,575	33	12,777	64	475	2	19,827	96.7

Invalid responses include no response or multiple responses.

43A16. Within the last 12 months, have you had any of the following?

Repetitive stress injury (e.g. carpal tunnel syndrome)

	Male		Female		Unknown		Total	
	Freq.	Pct.	Freq.	Pct.	Freq.	Pct.	Freq.	Pct.
1 No	6,208	94	11,801	92	429	93	18,438	92.6
2 Yes	401	6	1,046	8	32	7	1,479	7.4
Valid responses =	6,609	33	12,847	65	461	2	19,917	97.1

Invalid responses include no response or multiple responses.

43A17. Within the last 12 months, have you had any of the following?

Seasonal Affective Disorder

	Male		Female		Unknown		Total	
	Freq.	Pct.	Freq.	Pct.	Freq.	Pct.	Freq.	Pct.
1 No	6,267	95	11,828	92	438	95	18,533	93.2
2 Yes	323	5	1,012	8	22	5	1,357	6.8
Valid responses =	6,590	33	12,840	65	460	2	19,890	97.0

Invalid responses include no response or multiple responses.



American College Health Association-National College Health Assessment (ACHA-NCHA) Reference Group Data Report - Fall 2007

American College Health Association
P.O. Box 28937
Baltimore, MD 21240-8937
(410) 859-1500
www.acha.org

03/19/08

FREQUENCY REPORT

Number of Surveys (n) = 20,507 Paper & Web Surveys

43A18. Within the last 12 months, have you had any of the following?**Substance abuse problem**

	Male		Female		Unknown		Total	
	Freq.	Pct.	Freq.	Pct.	Freq.	Pct.	Freq.	Pct.
1 No	6,310	96	12,423	97	436	96	19,169	96.4
2 Yes	286	4	406	3	19	4	711	3.6
Valid responses =	6,596	33	12,829	65	455	2	19,880	96.9

Invalid responses include no response or multiple responses.

43A19. Within the last 12 months, have you had any of the following?**Back pain**

	Male		Female		Unknown		Total	
	Freq.	Pct.	Freq.	Pct.	Freq.	Pct.	Freq.	Pct.
1 No	3,646	55	6,155	48	261	58	10,062	50.6
2 Yes	2,962	45	6,686	52	193	43	9,841	49.4
Valid responses =	6,608	33	12,841	65	454	2	19,903	97.1

Invalid responses include no response or multiple responses.

43A20. Within the last 12 months, have you had any of the following?**Broken bone/fracture**

	Male		Female		Unknown		Total	
	Freq.	Pct.	Freq.	Pct.	Freq.	Pct.	Freq.	Pct.
1 No	6,113	93	12,258	96	427	95	18,798	94.5
2 Yes	490	7	580	5	25	6	1,095	5.5
Valid responses =	6,603	33	12,838	65	452	2	19,893	97.0

Invalid responses include no response or multiple responses.

43A21. Within the last 12 months, have you had any of the following?**Bronchitis**

	Male		Female		Unknown		Total	
	Freq.	Pct.	Freq.	Pct.	Freq.	Pct.	Freq.	Pct.
1 No	6,232	95	11,670	91	418	92	18,320	92.1
2 Yes	365	6	1,165	9	38	8	1,568	7.9
Valid responses =	6,597	33	12,835	65	456	2	19,888	97.0

Invalid responses include no response or multiple responses.

43A22. Within the last 12 months, have you had any of the following?**Chlamydia**

	Male		Female		Unknown		Total	
	Freq.	Pct.	Freq.	Pct.	Freq.	Pct.	Freq.	Pct.
1 No	6,556	99	12,703	99	451	99	19,710	99.1
2 Yes	40	1	136	1	4	1	180	0.9
Valid responses =	6,596	33	12,839	65	455	2	19,890	97.0

Invalid responses include no response or multiple responses.

43A23. Within the last 12 months, have you had any of the following?**Ear infection**

	Male		Female		Unknown		Total	
	Freq.	Pct.	Freq.	Pct.	Freq.	Pct.	Freq.	Pct.
1 No	6,070	92	11,135	87	400	87	17,605	88.5
2 Yes	524	8	1,710	13	60	13	2,294	11.5
Valid responses =	6,594	33	12,845	65	460	2	19,899	97.0

Invalid responses include no response or multiple responses.



American College Health Association-National College Health Assessment (ACHA-NCHA) Reference Group Data Report - Fall 2007

American College Health Association
P.O. Box 28937
Baltimore, MD 21240-8937
(410) 859-1500
www.acha.org

03/19/08

FREQUENCY REPORT

Number of Surveys (n) = 20,507 Paper & Web Surveys

43A24. Within the last 12 months, have you had any of the following?

Gonorrhea

	Male		Female		Unknown		Total	
	Freq.	Pct.	Freq.	Pct.	Freq.	Pct.	Freq.	Pct.
1 No	6,562	100	12,797	100	452	99	19,811	99.7
2 Yes	24	0	28	0	4	1	56	0.3
Valid responses =	6,586	33	12,825	65	456	2	19,867	96.9

Invalid responses include no response or multiple responses.

43A25. Within the last 12 months, have you had any of the following?

Mononucleosis

	Male		Female		Unknown		Total	
	Freq.	Pct.	Freq.	Pct.	Freq.	Pct.	Freq.	Pct.
1 No	6,476	98	12,520	98	443	97	19,439	97.8
2 Yes	116	2	308	2	14	3	438	2.2
Valid responses =	6,592	33	12,828	65	457	2	19,877	96.9

Invalid responses include no response or multiple responses.

43A26. Within the last 12 months, have you had any of the following?

Pelvic Inflammatory Disease

	Male		Female		Unknown		Total	
	Freq.	Pct.	Freq.	Pct.	Freq.	Pct.	Freq.	Pct.
1 No	6,565	100	12,791	100	454	99	19,810	99.6
2 Yes	22	0	48	0	3	1	73	0.4
Valid responses =	6,587	33	12,839	65	457	2	19,883	97.0

Invalid responses include no response or multiple responses.

43A27. Within the last 12 months, have you had any of the following?

Sinus infection

	Male		Female		Unknown		Total	
	Freq.	Pct.	Freq.	Pct.	Freq.	Pct.	Freq.	Pct.
1 No	4,965	75	8,116	63	339	75	13,420	67.4
2 Yes	1,641	25	4,731	37	116	26	6,488	32.6
Valid responses =	6,606	33	12,847	65	455	2	19,908	97.1

Invalid responses include no response or multiple responses.

43A28. Within the last 12 months, have you had any of the following?

Strep throat

	Male		Female		Unknown		Total	
	Freq.	Pct.	Freq.	Pct.	Freq.	Pct.	Freq.	Pct.
1 No	5,748	87	10,656	83	389	85	16,793	84.5
2 Yes	854	13	2,168	17	69	15	3,091	15.5
Valid responses =	6,602	33	12,824	64	458	2	19,884	97.0

Invalid responses include no response or multiple responses.

43A29. Within the last 12 months, have you had any of the following?

Tuberculosis

	Male		Female		Unknown		Total	
	Freq.	Pct.	Freq.	Pct.	Freq.	Pct.	Freq.	Pct.
1 No	6,550	100	12,754	100	451	99	19,755	99.6
2 Yes	26	0	43	0	3	1	72	0.4
Valid responses =	6,576	33	12,797	65	454	2	19,827	96.7

Invalid responses include no response or multiple responses.



American College Health Association-National College Health Assessment (ACHA-NCHA) Reference Group Data Report - Fall 2007

American College Health Association
P.O. Box 28937
Baltimore, MD 21240-8937
(410) 859-1500
www.acha.org

03/19/08

FREQUENCY REPORT

Number of Surveys (n) = 20,507 Paper & Web Surveys

43B1. Have you ever been diagnosed with any of the following?

Allergy problems

	Male		Female		Unknown		Total	
	Freq.	Pct.	Freq.	Pct.	Freq.	Pct.	Freq.	Pct.
1 No	4,143	63	7,336	57	298	67	11,777	59.3
2 Yes	2,456	37	5,468	43	149	33	8,073	40.7
Valid responses =	6,599	33	12,804	65	447	2	19,850	96.8

Invalid responses include no response or multiple responses.

43B2. Have you ever been diagnosed with any of the following?

Anorexia

	Male		Female		Unknown		Total	
	Freq.	Pct.	Freq.	Pct.	Freq.	Pct.	Freq.	Pct.
1 No	6,541	100	12,430	97	438	99	19,409	98.1
2 Yes	30	1	351	3	3	1	384	1.9
Valid responses =	6,571	33	12,781	65	441	2	19,793	96.5

Invalid responses include no response or multiple responses.

43B3. Have you ever been diagnosed with any of the following?

Anxiety Disorder

	Male		Female		Unknown		Total	
	Freq.	Pct.	Freq.	Pct.	Freq.	Pct.	Freq.	Pct.
1 No	6,213	95	11,415	89	409	93	18,037	91.1
2 Yes	365	6	1,370	11	31	7	1,766	8.9
Valid responses =	6,578	33	12,785	65	440	2	19,803	96.6

Invalid responses include no response or multiple responses.

43B4. Have you ever been diagnosed with any of the following?

Asthma

	Male		Female		Unknown		Total	
	Freq.	Pct.	Freq.	Pct.	Freq.	Pct.	Freq.	Pct.
1 No	5,587	85	10,480	82	368	84	16,435	83.1
2 Yes	994	15	2,286	18	71	16	3,351	16.9
Valid responses =	6,581	33	12,766	65	439	2	19,786	96.5

Invalid responses include no response or multiple responses.

43B5. Have you ever been diagnosed with any of the following?

Bulimia

	Male		Female		Unknown		Total	
	Freq.	Pct.	Freq.	Pct.	Freq.	Pct.	Freq.	Pct.
1 No	6,529	100	12,504	98	433	100	19,466	98.6
2 Yes	24	0	247	2	1	0	272	1.4
Valid responses =	6,553	33	12,751	65	434	2	19,738	96.3

Invalid responses include no response or multiple responses.

43B6. Have you ever been diagnosed with any of the following?

Chronic Fatigue Syndrome

	Male		Female		Unknown		Total	
	Freq.	Pct.	Freq.	Pct.	Freq.	Pct.	Freq.	Pct.
1 No	6,521	99	12,564	99	430	99	19,515	98.8
2 Yes	43	1	195	2	3	1	241	1.2
Valid responses =	6,564	33	12,759	65	433	2	19,756	96.3

Invalid responses include no response or multiple responses.



American College Health Association-National College Health Assessment (ACHA-NCHA) Reference Group Data Report - Fall 2007

American College Health Association
P.O. Box 28937
Baltimore, MD 21240-8937
(410) 859-1500
www.acha.org

03/19/08

FREQUENCY REPORT

Number of Surveys (n) = 20,507 Paper & Web Surveys

43B7. Have you ever been diagnosed with any of the following?

Depression

	Male		Female		Unknown		Total		
	Freq.	Pct.	Freq.	Pct.	Freq.	Pct.	Freq.	Pct.	
1 No	5,911	90	10,513	82	390	90	16,814	84.9	
2 Yes	658	10	2,276	18	45	10	2,979	15.1	
Valid responses =	6,569	33	12,789	65	435	2	19,793	96.5	

Invalid responses include no response or multiple responses.

43B8. Have you ever been diagnosed with any of the following?

Diabetes

	Male		Female		Unknown		Total		
	Freq.	Pct.	Freq.	Pct.	Freq.	Pct.	Freq.	Pct.	
1 No	6,477	99	12,560	98	418	97	19,455	98.5	
2 Yes	83	1	206	2	11	3	300	1.5	
Valid responses =	6,560	33	12,766	65	429	2	19,755	96.3	

Invalid responses include no response or multiple responses.

43B9. Have you ever been diagnosed with any of the following?

Endometriosis

	Male		Female		Unknown		Total		
	Freq.	Pct.	Freq.	Pct.	Freq.	Pct.	Freq.	Pct.	
1 No	6,549	100	12,493	98	424	99	19,466	98.6	
2 Yes	14	0	267	2	5	1	286	1.4	
Valid responses =	6,563	33	12,760	65	429	2	19,752	96.3	

Invalid responses include no response or multiple responses.

43B10. Have you ever been diagnosed with any of the following?

Genital herpes

	Male		Female		Unknown		Total		
	Freq.	Pct.	Freq.	Pct.	Freq.	Pct.	Freq.	Pct.	
1 No	6,526	99	12,589	99	426	99	19,541	98.9	
2 Yes	37	1	174	1	4	1	215	1.1	
Valid responses =	6,563	33	12,763	65	430	2	19,756	96.3	

Invalid responses include no response or multiple responses.

43B11. Have you ever been diagnosed with any of the following?

Genital warts/HPV

	Male		Female		Unknown		Total		
	Freq.	Pct.	Freq.	Pct.	Freq.	Pct.	Freq.	Pct.	
1 No	6,491	99	12,236	96	423	99	19,150	96.9	
2 Yes	79	1	529	4	4	1	612	3.1	
Valid responses =	6,570	33	12,765	65	427	2	19,762	96.4	

Invalid responses include no response or multiple responses.

43B12. Have you ever been diagnosed with any of the following?

Hepatitis B or C

	Male		Female		Unknown		Total		
	Freq.	Pct.	Freq.	Pct.	Freq.	Pct.	Freq.	Pct.	
1 No	6,527	99	12,712	100	423	99	19,662	99.5	
2 Yes	40	1	60	1	4	1	104	0.5	
Valid responses =	6,567	33	12,772	65	427	2	19,766	96.4	

Invalid responses include no response or multiple responses.



American College Health Association-National College Health Assessment (ACHA-NCHA) Reference Group Data Report - Fall 2007

American College Health Association
P.O. Box 28937
Baltimore, MD 21240-8937
(410) 859-1500
www.acha.org

03/19/08

FREQUENCY REPORT

Number of Surveys (n) = 20,507 Paper & Web Surveys

43B13. Have you ever been diagnosed with any of the following?**High blood pressure**

	Male		Female		Unknown		Total	
	Freq.	Pct.	Freq.	Pct.	Freq.	Pct.	Freq.	Pct.
1 No	6,154	94	12,245	96	409	96	18,808	95.2
2 Yes	413	6	511	4	18	4	942	4.8
Valid responses =	6,567	33	12,756	65	427	2	19,750	96.3

Invalid responses include no response or multiple responses.

43B14. Have you ever been diagnosed with any of the following?**High cholesterol**

	Male		Female		Unknown		Total	
	Freq.	Pct.	Freq.	Pct.	Freq.	Pct.	Freq.	Pct.
1 No	6,273	96	12,135	95	398	93	18,806	95.3
2 Yes	292	4	611	5	28	7	931	4.7
Valid responses =	6,565	33	12,746	65	426	2	19,737	96.2

Invalid responses include no response or multiple responses.

43B15. Have you ever been diagnosed with any of the following?**HIV infection**

	Male		Female		Unknown		Total	
	Freq.	Pct.	Freq.	Pct.	Freq.	Pct.	Freq.	Pct.
1 No	6,524	100	12,694	100	423	100	19,641	99.8
2 Yes	20	0	22	0	1	0	43	0.2
Valid responses =	6,544	33	12,716	65	424	2	19,684	96.0

Invalid responses include no response or multiple responses.

43B16. Have you ever been diagnosed with any of the following?**Repetitive stress injury (e.g. carpal tunnel syndrome)**

	Male		Female		Unknown		Total	
	Freq.	Pct.	Freq.	Pct.	Freq.	Pct.	Freq.	Pct.
1 No	6,274	96	11,841	93	401	96	18,516	93.8
2 Yes	272	4	930	7	19	5	1,221	6.2
Valid responses =	6,546	33	12,771	65	420	2	19,737	96.2

Invalid responses include no response or multiple responses.

43B17. Have you ever been diagnosed with any of the following?**Seasonal Affective Disorder**

	Male		Female		Unknown		Total	
	Freq.	Pct.	Freq.	Pct.	Freq.	Pct.	Freq.	Pct.
1 No	6,420	98	12,358	97	409	99	19,187	97.3
2 Yes	124	2	401	3	6	1	531	2.7
Valid responses =	6,544	33	12,759	65	415	2	19,718	96.2

Invalid responses include no response or multiple responses.

43B18. Have you ever been diagnosed with any of the following?**Substance abuse problem**

	Male		Female		Unknown		Total	
	Freq.	Pct.	Freq.	Pct.	Freq.	Pct.	Freq.	Pct.
1 No	6,380	98	12,474	98	398	96	19,252	97.8
2 Yes	153	2	274	2	15	4	442	2.2
Valid responses =	6,533	33	12,748	65	413	2	19,694	96.0

Invalid responses include no response or multiple responses.



American College Health Association-National College Health Assessment (ACHA-NCHA) Reference Group Data Report - Fall 2007

American College Health Association
P.O. Box 28937
Baltimore, MD 21240-8937
(410) 859-1500
www.acha.org

03/19/08

FREQUENCY REPORT

Number of Surveys (n) = 20,507 Paper & Web Surveys

43B19. Have you ever been diagnosed with any of the following?**Back pain**

	Male		Female		Unknown		Total		
	Freq.	Pct.	Freq.	Pct.	Freq.	Pct.	Freq.	Pct.	
1 No	5,188	79	9,686	76	331	80	15,205	77.1	
2 Yes	1,367	21	3,077	24	83	20	4,527	22.9	
Valid responses =	6,555	33	12,763	65	414	2	19,732	96.2	

Invalid responses include no response or multiple responses.

43B20. Have you ever been diagnosed with any of the following?**Broken bone/fracture**

	Male		Female		Unknown		Total		
	Freq.	Pct.	Freq.	Pct.	Freq.	Pct.	Freq.	Pct.	
1 No	4,965	76	10,107	79	340	83	15,412	78.1	
2 Yes	1,590	24	2,665	21	71	17	4,326	21.9	
Valid responses =	6,555	33	12,772	65	411	2	19,738	96.3	

Invalid responses include no response or multiple responses.

43B21. Have you ever been diagnosed with any of the following?**Bronchitis**

	Male		Female		Unknown		Total		
	Freq.	Pct.	Freq.	Pct.	Freq.	Pct.	Freq.	Pct.	
1 No	5,602	86	9,979	78	340	83	15,921	80.7	
2 Yes	949	15	2,785	22	69	17	3,803	19.3	
Valid responses =	6,551	33	12,764	65	409	2	19,724	96.2	

Invalid responses include no response or multiple responses.

43B22. Have you ever been diagnosed with any of the following?**Chlamydia**

	Male		Female		Unknown		Total		
	Freq.	Pct.	Freq.	Pct.	Freq.	Pct.	Freq.	Pct.	
1 No	6,461	99	12,380	97	396	98	19,237	97.6	
2 Yes	82	1	382	3	10	3	474	2.4	
Valid responses =	6,543	33	12,762	65	406	2	19,711	96.1	

Invalid responses include no response or multiple responses.

43B23. Have you ever been diagnosed with any of the following?**Ear infection**

	Male		Female		Unknown		Total		
	Freq.	Pct.	Freq.	Pct.	Freq.	Pct.	Freq.	Pct.	
1 No	4,685	71	7,630	60	298	72	12,613	63.9	
2 Yes	1,873	29	5,145	40	117	28	7,135	36.1	
Valid responses =	6,558	33	12,775	65	415	2	19,748	96.3	

Invalid responses include no response or multiple responses.



American College Health Association-National College Health Assessment (ACHA-NCHA) Reference Group Data Report - Fall 2007

American College Health Association
P.O. Box 28937
Baltimore, MD 21240-8937
(410) 859-1500
www.acha.org

03/19/08

FREQUENCY REPORT

Number of Surveys (n) = 20,507 Paper & Web Surveys

43B24. Have you ever been diagnosed with any of the following?**Gonorrhea**

	Male		Female		Unknown		Total	
	Freq.	Pct.	Freq.	Pct.	Freq.	Pct.	Freq.	Pct.
1 No	6,523	100	12,696	100	404	99	19,623	99.5
2 Yes	25	0	64	1	5	1	94	0.5
Valid responses =	6,548	33	12,760	65	409	2	19,717	96.1

Invalid responses include no response or multiple responses.

43B25. Have you ever been diagnosed with any of the following?**Mononucleosis**

	Male		Female		Unknown		Total	
	Freq.	Pct.	Freq.	Pct.	Freq.	Pct.	Freq.	Pct.
1 No	6,204	95	11,631	91	391	95	18,226	92.5
2 Yes	332	5	1,124	9	22	5	1,478	7.5
Valid responses =	6,536	33	12,755	65	413	2	19,704	96.1

Invalid responses include no response or multiple responses.

43B26. Have you ever been diagnosed with any of the following?**Pelvic Inflammatory Disease**

	Male		Female		Unknown		Total	
	Freq.	Pct.	Freq.	Pct.	Freq.	Pct.	Freq.	Pct.
1 No	6,538	100	12,639	99	406	99	19,583	99.3
2 Yes	10	0	119	1	5	1	134	0.7
Valid responses =	6,548	33	12,758	65	411	2	19,717	96.1

Invalid responses include no response or multiple responses.

43B27. Have you ever been diagnosed with any of the following?**Sinus infection**

	Male		Female		Unknown		Total	
	Freq.	Pct.	Freq.	Pct.	Freq.	Pct.	Freq.	Pct.
1 No	4,581	70	6,992	55	291	71	11,864	60.1
2 Yes	1,974	30	5,796	45	122	30	7,892	39.9
Valid responses =	6,555	33	12,788	65	413	2	19,756	96.3

Invalid responses include no response or multiple responses.

43B28. Have you ever been diagnosed with any of the following?**Strep throat**

	Male		Female		Unknown		Total	
	Freq.	Pct.	Freq.	Pct.	Freq.	Pct.	Freq.	Pct.
1 No	4,309	66	7,027	55	284	69	11,620	58.9
2 Yes	2,255	34	5,741	45	129	31	8,125	41.1
Valid responses =	6,564	33	12,768	65	413	2	19,745	96.3

Invalid responses include no response or multiple responses.

43B29. Have you ever been diagnosed with any of the following?**Tuberculosis**

	Male		Female		Unknown		Total	
	Freq.	Pct.	Freq.	Pct.	Freq.	Pct.	Freq.	Pct.
1 No	6,465	99	12,639	99	409	99	19,513	99.3
2 Yes	58	1	82	1	3	1	143	0.7
Valid responses =	6,523	33	12,721	65	412	2	19,656	95.9

Invalid responses include no response or multiple responses.



**American College Health Association-National College Health Assessment (ACHA-NCHA)
Reference Group Data Report - Fall 2007**

American College Health Association
P.O. Box 28937
Baltimore, MD 21240-8937
(410) 859-1500
www.acha.org

03/19/08

FREQUENCY REPORT

Number of Surveys (n) = 20,507 Paper & Web Surveys

44A. Within the last 12 months, have any of the following affected your academic performance?

Alcohol use

	Male		Female		Unknown		Total	
	Freq.	Pct.	Freq.	Pct.	Freq.	Pct.	Freq.	Pct.
1 Not happen to me/not N/A	3,335	50	6,722	52	242	59	10,299	51.6
2 Exprd academics not affected	2,838	43	5,423	42	146	35	8,407	42.1
3 Received lower grade exam	360	5	533	4	16	4	909	4.6
4 Received lower grade course	119	2	146	1	5	1	270	1.4
5 Received incomplete/dropped	22	0	38	0	5	1	65	0.3
Valid responses =	6,674	33	12,862	64	414	2	19,950	97.3

Invalid responses include no response or multiple responses.

44B. Within the last 12 months, have any of the following affected your academic performance?

Allergies

	Male		Female		Unknown		Total	
	Freq.	Pct.	Freq.	Pct.	Freq.	Pct.	Freq.	Pct.
1 Not happen to me/not N/A	4,119	62	6,996	55	258	63	11,373	57.1
2 Exprd academics not affected	2,243	34	5,141	40	132	32	7,516	37.7
3 Received lower grade exam	261	4	627	5	20	5	908	4.6
4 Received lower grade course	39	1	65	1	1	0	105	0.5
5 Received incomplete/dropped	4	0	12	0	1	0	17	0.1
Valid responses =	6,666	33	12,841	64	412	2	19,919	97.1

Invalid responses include no response or multiple responses.

44C. Within the last 12 months, have any of the following affected your academic performance?

Assault (physical)

	Male		Female		Unknown		Total	
	Freq.	Pct.	Freq.	Pct.	Freq.	Pct.	Freq.	Pct.
1 Not happen to me/not N/A	6,316	95	12,374	97	372	91	19,062	95.9
2 Exprd academics not affected	281	4	364	3	29	7	674	3.4
3 Received lower grade exam	31	1	45	0	5	1	81	0.4
4 Received lower grade course	12	0	29	0	2	1	43	0.2
5 Received incomplete/dropped	8	0	16	0	0	0	24	0.1
Valid responses =	6,648	33	12,828	65	408	2	19,884	97.0

Invalid responses include no response or multiple responses.

44D. Within the last 12 months, have any of the following affected your academic performance?

Assault (sexual)

	Male		Female		Unknown		Total	
	Freq.	Pct.	Freq.	Pct.	Freq.	Pct.	Freq.	Pct.
1 Not happen to me/not N/A	6,450	97	12,281	96	375	91	19,106	96.1
2 Exprd academics not affected	161	2	409	3	25	6	595	3.0
3 Received lower grade exam	16	0	64	1	7	2	87	0.4
4 Received lower grade course	11	0	59	1	3	1	73	0.4
5 Received incomplete/dropped	5	0	22	0	1	0	28	0.1
Valid responses =	6,643	33	12,835	65	411	2	19,889	97.0

Invalid responses include no response or multiple responses.



**American College Health Association-National College Health Assessment (ACHA-NCHA)
Reference Group Data Report - Fall 2007**

American College Health Association
P.O. Box 28937
Baltimore, MD 21240-8937
(410) 859-1500
www.acha.org

03/19/08

FREQUENCY REPORT

Number of Surveys (n) = 20,507 Paper & Web Surveys

44E. Within the last 12 months, have any of the following affected your academic performance?

Attention Deficit Disorder

	Male		Female		Unknown		Total		
	Freq.	Pct.	Freq.	Pct.	Freq.	Pct.	Freq.	Pct.	
1 Not happen to me/not N/A	5,562	84	11,343	89	343	84	17,248	86.8	
2 Exprd academics not affected	503	8	685	5	35	9	1,223	6.2	
3 Received lower grade exam	315	5	442	4	13	3	770	3.9	
4 Received lower grade course	219	3	256	2	14	3	489	2.5	
5 Received incomplete/dropped	54	1	81	1	3	1	138	0.7	
Valid responses =	6,653	33	12,807	64	408	2	19,868	96.9	

Invalid responses include no response or multiple responses.

44F. Within the last 12 months, have any of the following affected your academic performance?

Cold/Flu/Sore throat

	Male		Female		Unknown		Total		
	Freq.	Pct.	Freq.	Pct.	Freq.	Pct.	Freq.	Pct.	
1 Not happen to me/not N/A	2,261	34	2,371	19	163	40	4,795	24.1	
2 Exprd academics not affected	3,053	46	6,953	54	165	40	10,171	51.1	
3 Received lower grade exam	1,172	18	3,145	25	75	18	4,392	22.1	
4 Received lower grade course	139	2	316	3	6	2	461	2.3	
5 Received incomplete/dropped	25	0	56	0	1	0	82	0.4	
Valid responses =	6,650	33	12,841	65	410	2	19,901	97.0	

Invalid responses include no response or multiple responses.

44G. Within the last 12 months, have any of the following affected your academic performance?

Concern for a troubled friend or family member

	Male		Female		Unknown		Total		
	Freq.	Pct.	Freq.	Pct.	Freq.	Pct.	Freq.	Pct.	
1 Not happen to me/not N/A	3,252	49	4,226	33	200	49	7,678	38.7	
2 Exprd academics not affected	2,448	37	5,991	47	141	35	8,580	43.2	
3 Received lower grade exam	706	11	1,984	16	55	14	2,745	13.8	
4 Received lower grade course	194	3	484	4	7	2	685	3.4	
5 Received incomplete/dropped	46	1	125	1	4	1	175	0.9	
Valid responses =	6,646	33	12,810	64	407	2	19,863	96.9	

Invalid responses include no response or multiple responses.

44H. Within the last 12 months, have any of the following affected your academic performance?

Chronic illness (diabetes, asthma, etc.)

	Male		Female		Unknown		Total		
	Freq.	Pct.	Freq.	Pct.	Freq.	Pct.	Freq.	Pct.	
1 Not happen to me/not N/A	6,006	90	10,991	86	343	86	17,340	87.3	
2 Exprd academics not affected	485	7	1,357	11	44	11	1,886	9.5	
3 Received lower grade exam	92	1	278	2	10	3	380	1.9	
4 Received lower grade course	38	1	110	1	2	1	150	0.8	
5 Received incomplete/dropped	25	0	82	1	2	1	109	0.5	
Valid responses =	6,646	33	12,818	65	401	2	19,865	96.9	

Invalid responses include no response or multiple responses.



American College Health Association-National College Health Assessment (ACHA-NCHA) Reference Group Data Report - Fall 2007

American College Health Association

P.O. Box 28937

Baltimore, MD 21240-8937

(410) 859-1500

www.acha.org

03/19/08

FREQUENCY REPORT

Number of Surveys (n) = 20,507 Paper & Web Surveys

44I. Within the last 12 months, have any of the following affected your academic performance?**Chronic pain**

	Male		Female		Unknown		Total		
	Freq.	Pct.	Freq.	Pct.	Freq.	Pct.	Freq.	Pct.	
1 Not happen to me/not N/A	5,830	88	10,837	85	346	85	17,013	85.6	
2 Exprd academics not affected	614	9	1,433	11	46	11	2,093	10.5	
3 Received lower grade exam	141	2	357	3	9	2	507	2.6	
4 Received lower grade course	39	1	126	1	6	2	171	0.9	
5 Received incomplete/dropped	20	0	59	1	1	0	80	0.4	
Valid responses =	6,644	33	12,812	64	408	2	19,864	96.9	

Invalid responses include no response or multiple responses.

44J. Within the last 12 months, have any of the following affected your academic performance?**Death of a friend or family member**

	Male		Female		Unknown		Total		
	Freq.	Pct.	Freq.	Pct.	Freq.	Pct.	Freq.	Pct.	
1 Not happen to me/not N/A	4,928	74	8,779	68	291	72	13,998	70.4	
2 Exprd academics not affected	1,216	18	2,639	21	79	20	3,934	19.8	
3 Received lower grade exam	295	4	895	7	20	5	1,210	6.1	
4 Received lower grade course	149	2	387	3	8	2	544	2.7	
5 Received incomplete/dropped	52	1	134	1	5	1	191	1.0	
Valid responses =	6,640	33	12,834	65	403	2	19,877	96.9	

Invalid responses include no response or multiple responses.

44K. Within the last 12 months, have any of the following affected your academic performance?**Depression/Anxiety Disorder/Seasonal Affective Disorder**

	Male		Female		Unknown		Total		
	Freq.	Pct.	Freq.	Pct.	Freq.	Pct.	Freq.	Pct.	
1 Not happen to me/not N/A	5,022	76	8,550	67	308	76	13,880	69.8	
2 Exprd academics not affected	801	12	2,075	16	53	13	2,929	14.7	
3 Received lower grade exam	467	7	1,261	10	28	7	1,756	8.8	
4 Received lower grade course	263	4	677	5	10	3	950	4.8	
5 Received incomplete/dropped	99	2	276	2	5	1	380	1.9	
Valid responses =	6,652	33	12,839	65	404	2	19,895	97.0	

Invalid responses include no response or multiple responses.

44L. Within the last 12 months, have any of the following affected your academic performance?**Drug use**

	Male		Female		Unknown		Total		
	Freq.	Pct.	Freq.	Pct.	Freq.	Pct.	Freq.	Pct.	
1 Not happen to me/not N/A	5,653	85	11,701	91	340	84	17,694	89.0	
2 Exprd academics not affected	769	12	936	7	52	13	1,757	8.8	
3 Received lower grade exam	138	2	114	1	6	2	258	1.3	
4 Received lower grade course	67	1	60	1	4	1	131	0.7	
5 Received incomplete/dropped	18	0	17	0	1	0	36	0.2	
Valid responses =	6,645	33	12,828	65	403	2	19,876	96.9	

Invalid responses include no response or multiple responses.



American College Health Association-National College Health Assessment (ACHA-NCHA) Reference Group Data Report - Fall 2007

American College Health Association
P.O. Box 28937
Baltimore, MD 21240-8937
(410) 859-1500
www.acha.org

03/19/08

FREQUENCY REPORT

Number of Surveys (n) = 20,507 Paper & Web Surveys

44M. Within the last 12 months, have any of the following affected your academic performance?**Eating disorder/problem**

	Male		Female		Unknown		Total	
	Freq.	Pct.	Freq.	Pct.	Freq.	Pct.	Freq.	Pct.
1 Not happen to me/not N/A	6,360	96	11,843	92	370	92	18,573	93.5
2 Exprd academics not affected	223	3	780	6	26	6	1,029	5.2
3 Received lower grade exam	34	1	112	1	3	1	149	0.7
4 Received lower grade course	17	0	68	1	2	1	87	0.4
5 Received incomplete/dropped	5	0	24	0	3	1	32	0.2
Valid responses =	6,639	33	12,827	65	404	2	19,870	96.9

Invalid responses include no response or multiple responses.

44N. Within the last 12 months, have any of the following affected your academic performance?**HIV Infection**

	Male		Female		Unknown		Total	
	Freq.	Pct.	Freq.	Pct.	Freq.	Pct.	Freq.	Pct.
1 Not happen to me/not N/A	6,529	98	12,746	99	386	96	19,661	99.0
2 Exprd academics not affected	87	1	71	1	15	4	173	0.9
3 Received lower grade exam	10	0	9	0	0	0	19	0.1
4 Received lower grade course	6	0	2	0	2	1	10	0.1
5 Received incomplete/dropped	3	0	0	0	1	0	4	0.0
Valid responses =	6,635	33	12,828	65	404	2	19,867	96.9

Invalid responses include no response or multiple responses.

44O. Within the last 12 months, have any of the following affected your academic performance?**Injury**

	Male		Female		Unknown		Total	
	Freq.	Pct.	Freq.	Pct.	Freq.	Pct.	Freq.	Pct.
1 Not happen to me/not N/A	5,140	78	10,526	82	313	78	15,979	80.7
2 Exprd academics not affected	1,179	18	1,773	14	66	17	3,018	15.2
3 Received lower grade exam	201	3	297	2	15	4	513	2.6
4 Received lower grade course	76	1	116	1	3	1	195	1.0
5 Received incomplete/dropped	37	1	61	1	3	1	101	0.5
Valid responses =	6,633	33	12,773	64	400	2	19,806	96.6

Invalid responses include no response or multiple responses.

44P. Within the last 12 months, have any of the following affected your academic performance?**Internet use/computer games**

	Male		Female		Unknown		Total	
	Freq.	Pct.	Freq.	Pct.	Freq.	Pct.	Freq.	Pct.
1 Not happen to me/not N/A	2,828	43	6,669	52	240	60	9,737	48.9
2 Exprd academics not affected	2,490	38	4,561	36	109	27	7,160	36.0
3 Received lower grade exam	974	15	1,334	10	34	8	2,342	11.8
4 Received lower grade course	317	5	263	2	18	5	598	3.0
5 Received incomplete/dropped	39	1	14	0	2	1	55	0.3
Valid responses =	6,648	33	12,841	65	403	2	19,892	97.0

Invalid responses include no response or multiple responses.



**American College Health Association-National College Health Assessment (ACHA-NCHA)
Reference Group Data Report - Fall 2007**

American College Health Association
P.O. Box 28937
Baltimore, MD 21240-8937
(410) 859-1500
www.acha.org

03/19/08

FREQUENCY REPORT

Number of Surveys (n) = 20,507 Paper & Web Surveys

44Q. Within the last 12 months, have any of the following affected your academic performance?

Learning disability

	Male		Female		Unknown		Total		
	Freq.	Pct.	Freq.	Pct.	Freq.	Pct.	Freq.	Pct.	
1 Not happen to me/not N/A	6,060	91	11,972	94	359	89	18,391	92.7	
2 Exprd academics not affected	272	4	372	3	24	6	668	3.4	
3 Received lower grade exam	158	2	263	2	9	2	430	2.2	
4 Received lower grade course	112	2	151	1	6	2	269	1.4	
5 Received incomplete/dropped	37	1	50	0	4	1	91	0.5	
Valid responses =	6,639	33	12,808	65	402	2	19,849	96.8	

Invalid responses include no response or multiple responses.

44R. Within the last 12 months, have any of the following affected your academic performance?

Mononucleosis

	Male		Female		Unknown		Total		
	Freq.	Pct.	Freq.	Pct.	Freq.	Pct.	Freq.	Pct.	
1 Not happen to me/not N/A	6,416	97	12,328	96	365	92	19,109	96.1	
2 Exprd academics not affected	154	2	314	2	23	6	491	2.5	
3 Received lower grade exam	34	1	93	1	6	2	133	0.7	
4 Received lower grade course	34	1	76	1	0	0	110	0.6	
5 Received incomplete/dropped	9	0	32	0	2	1	43	0.2	
Valid responses =	6,647	33	12,843	65	396	2	19,886	97.0	

Invalid responses include no response or multiple responses.

44S. Within the last 12 months, have any of the following affected your academic performance?

Pregnancy (yours or your partner's)

	Male		Female		Unknown		Total		
	Freq.	Pct.	Freq.	Pct.	Freq.	Pct.	Freq.	Pct.	
1 Not happen to me/not N/A	6,363	96	12,407	97	371	93	19,141	96.2	
2 Exprd academics not affected	178	3	293	2	18	5	489	2.5	
3 Received lower grade exam	55	1	69	1	4	1	128	0.6	
4 Received lower grade course	37	1	46	0	3	1	86	0.4	
5 Received incomplete/dropped	15	0	38	0	2	1	55	0.3	
Valid responses =	6,648	33	12,853	65	398	2	19,899	97.0	

Invalid responses include no response or multiple responses.

44T. Within the last 12 months, have any of the following affected your academic performance?

Relationship difficulty

	Male		Female		Unknown		Total		
	Freq.	Pct.	Freq.	Pct.	Freq.	Pct.	Freq.	Pct.	
1 Not happen to me/not N/A	3,967	60	6,844	53	258	65	11,069	55.7	
2 Exprd academics not affected	1,714	26	3,940	31	83	21	5,737	28.8	
3 Received lower grade exam	657	10	1,524	12	38	10	2,219	11.2	
4 Received lower grade course	252	4	444	4	12	3	708	3.6	
5 Received incomplete/dropped	51	1	100	1	4	1	155	0.8	
Valid responses =	6,641	33	12,852	65	395	2	19,888	97.0	

Invalid responses include no response or multiple responses.



American College Health Association-National College Health Assessment (ACHA-NCHA)

Reference Group Data Report - Fall 2007

American College Health Association

P.O. Box 28937

Baltimore, MD 21240-8937

(410) 859-1500

www.acha.org

03/19/08

FREQUENCY REPORT

Number of Surveys (n) = 20,507 Paper & Web Surveys

44U. Within the last 12 months, have any of the following affected your academic performance?

Sexually transmitted disease

	Male		Female		Unknown		Total	
	Freq.	Pct.	Freq.	Pct.	Freq.	Pct.	Freq.	Pct.
1 Not happen to me/not N/A	6,446	97	12,358	97	367	94	19,171	97.0
2 Exprd academics not affected	136	2	341	3	18	5	495	2.5
3 Received lower grade exam	20	0	43	0	3	1	66	0.3
4 Received lower grade course	7	0	12	0	1	0	20	0.1
5 Received incomplete/dropped	6	0	6	0	1	0	13	0.1
Valid responses =	6,615	33	12,760	65	390	2	19,765	96.4

Invalid responses include no response or multiple responses.

44V. Within the last 12 months, have any of the following affected your academic performance?

Sinus infection/ear infection/bronchitis/strep throat

	Male		Female		Unknown		Total	
	Freq.	Pct.	Freq.	Pct.	Freq.	Pct.	Freq.	Pct.
1 Not happen to me/not N/A	4,975	75	7,502	59	271	70	12,748	64.3
2 Exprd academics not affected	1,285	19	3,860	30	87	23	5,232	26.4
3 Received lower grade exam	302	5	1,277	10	25	7	1,604	8.1
4 Received lower grade course	52	1	141	1	4	1	197	1.0
5 Received incomplete/dropped	12	0	44	0	0	0	56	0.3
Valid responses =	6,626	33	12,824	65	387	2	19,837	96.7

Invalid responses include no response or multiple responses.

44W. Within the last 12 months, have any of the following affected your academic performance?

Sleep difficulties

	Male		Female		Unknown		Total	
	Freq.	Pct.	Freq.	Pct.	Freq.	Pct.	Freq.	Pct.
1 Not happen to me/not N/A	2,998	45	4,395	34	187	48	7,580	38.1
2 Exprd academics not affected	2,082	31	5,067	39	124	32	7,273	36.5
3 Received lower grade exam	1,168	18	2,767	22	60	15	3,995	20.1
4 Received lower grade course	351	5	549	4	17	4	917	4.6
5 Received incomplete/dropped	62	1	86	1	2	1	150	0.8
Valid responses =	6,661	33	12,864	65	390	2	19,915	97.1

Invalid responses include no response or multiple responses.

44X. Within the last 12 months, have any of the following affected your academic performance?

Stress

	Male		Female		Unknown		Total	
	Freq.	Pct.	Freq.	Pct.	Freq.	Pct.	Freq.	Pct.
1 Not happen to me/not N/A	2,300	35	2,161	17	141	36	4,602	23.1
2 Exprd academics not affected	2,555	38	6,059	47	140	36	8,754	44.0
3 Received lower grade exam	1,239	19	3,409	27	82	21	4,730	23.8
4 Received lower grade course	458	7	983	8	19	5	1,460	7.3
5 Received incomplete/dropped	98	2	244	2	8	2	350	1.8
Valid responses =	6,650	33	12,856	65	390	2	19,896	97.0

Invalid responses include no response or multiple responses.



**American College Health Association-National College Health Assessment (ACHA-NCHA)
Reference Group Data Report - Fall 2007**

American College Health Association
P.O. Box 28937
Baltimore, MD 21240-8937
(410) 859-1500
www.acha.org

03/19/08

FREQUENCY REPORT

Number of Surveys (n) = 20,507 Paper & Web Surveys

44Y. Within the last 12 months, have any of the following affected your academic performance?

Other

	Male		Female		Unknown		Total		
	Freq.	Pct.	Freq.	Pct.	Freq.	Pct.	Freq.	Pct.	
1 Not happen to me/not N/A	4,691	83	8,694	82	193	87	13,578	82.2	
2 Exprd academics not affected	520	9	1,045	10	19	9	1,584	9.6	
3 Received lower grade exam	232	4	556	5	4	2	792	4.8	
4 Received lower grade course	115	2	253	2	3	1	371	2.2	
5 Received incomplete/dropped	67	1	126	1	3	1	196	1.2	
Valid responses =	5,625	34	10,674	65	222	1	16,521	80.6	

Invalid responses include no response or multiple responses.

45. How old are you?

Age (Years)	Male		Female		Unknown		Total		
	Freq.	Pct.	Freq.	Pct.	Freq.	Pct.	Freq.	Pct.	
18	1,448	22	2,774	22	105	32	4,327	21.7	
19	1,094	16	2,228	17	49	15	3,371	16.9	
20	947	14	1,866	15	43	13	2,856	14.3	
21	836	13	1,696	13	31	10	2,563	12.9	
22	544	8	1,034	8	12	4	1,590	8.0	
23	344	5	575	5	14	4	933	4.7	
24	222	3	363	3	2	1	587	2.9	
25	204	3	292	2	8	3	504	2.5	
26	138	2	216	2	5	2	359	1.8	
27	117	2	179	1	3	1	299	1.5	
28	111	2	158	1	1	0	270	1.4	
29	71	1	108	1	3	1	182	0.9	
30	73	1	108	1	5	2	186	0.9	
31	57	1	85	1	4	1	146	0.7	
GE 32	500	8	1,191	9	39	12	1,730	8.7	
Valid responses =	6,706	34	12,873	65	324	2	19,903	97.1	

Invalid responses include no response or multiple responses.

	Mean	Median	Std Dev	Min	Max
Male	22.49	20.00	7.09	18	98
Female	22.62	20.00	7.29	18	90
Overall	22.60	20.00	7.33	18	98

46. What is your sex?

	Male		Female		Unknown		Total		
	Freq.	Pct.	Freq.	Pct.	Freq.	Pct.	Freq.	Pct.	
1 Female	0	0	12,991	100			12,991	65.7	
2 Male	6,778	100	0	0			6,778	34.3	
Valid responses =	6,778	34	12,991	66			19,769	96.4	

Invalid responses include no response or multiple responses.



American College Health Association-National College Health Assessment (ACHA-NCHA) Reference Group Data Report - Fall 2007

American College Health Association
P.O. Box 28937
Baltimore, MD 21240-8937
(410) 859-1500
www.acha.org

03/19/08

FREQUENCY REPORT

Number of Surveys (n) = 20,507 Paper & Web Surveys

47. Height in inches?

Inches	Male		Female		Unknown		Total	
	Freq.	Pct.	Freq.	Pct.	Freq.	Pct.	Freq.	Pct.
low-36	0	0	0	0	0	0	0	0.0
37-48	0	0	0	0	0	0	0	0.0
49-60	9	0	523	4	8	3	540	2.7
61-72	4,846	73	12,149	95	243	86	17,238	87.5
73-84	1,791	27	79	1	30	11	1,900	9.6
GE 85	6	0	8	0	1	0	15	0.1
Valid responses =	6,652	34	12,759	65	282	1	19,693	96.0

Invalid responses include no response or multiple responses.

	Mean	Median	Std Dev	Min	Max
Male	70.74	71.00	3.10	53	97
Female	65.09	65.00	2.87	50	98
Overall	67.03	67.00	3.99	50	98

48. What is your weight in pounds?

Pounds	Male		Female		Unknown		Total	
	Freq.	Pct.	Freq.	Pct.	Freq.	Pct.	Freq.	Pct.
0-50	0	0	0	0	0	0	0	0.0
51-100	19	0	326	3	5	2	350	1.8
101-150	1,585	24	8,400	66	149	47	10,134	51.5
151-200	3,588	54	3,101	24	130	41	6,819	34.6
201-250	1,094	17	670	5	27	9	1,791	9.1
251-300	274	4	193	2	6	2	473	2.4
301-350	63	1	30	0	1	0	94	0.5
351-400	12	0	6	0	1	0	19	0.1
401-450	3	0	2	0	0	0	5	0.0
GE 451	1	0	0	0	0	0	1	0.0
Valid responses =	6,639	34	12,728	65	319	2	19,686	96.0

Invalid responses include no response or multiple responses.

	Mean	Median	Std Dev	Min	Max
Male	179.68	172.00	39.87	55	500
Female	146.37	138.00	35.59	52	420
Overall	157.81	150.00	40.32	52	500

49. Year in school:

	Male		Female		Unknown		Total	
	Freq.	Pct.	Freq.	Pct.	Freq.	Pct.	Freq.	Pct.
1 1st year undergraduate	2,013	30	3,513	28	162	49	5,688	29.0
2 2nd year undergraduate	1,280	19	2,536	20	63	19	3,879	19.8
3 3rd year undergraduate	1,226	19	2,506	20	35	11	3,767	19.2
4 4th year undergraduate	983	15	2,214	17	27	8	3,224	16.4
5 5th year or more undergraduate	493	8	904	7	11	3	1,408	7.2
6 Graduate or professional	495	8	751	6	19	6	1,265	6.4
7 Adult special	31	1	71	1	3	1	105	0.5
8 Other	95	1	200	2	9	3	304	1.5
Valid responses =	6,616	34	12,695	65	329	2	19,640	95.8

Invalid responses include no response or multiple responses.



American College Health Association-National College Health Assessment (ACHA-NCHA) Reference Group Data Report - Fall 2007

American College Health Association
P.O. Box 28937
Baltimore, MD 21240-8937
(410) 859-1500
www.acha.org

03/19/08

FREQUENCY REPORT

Number of Surveys (n) = 20,507 Paper & Web Surveys

50. Are you a full-time student?

	Male		Female		Unknown		Total		
	Freq.	Pct.	Freq.	Pct.	Freq.	Pct.	Freq.	Pct.	
1 Yes	6,139	92	11,670	91	292	82	18,101	90.9	
2 No	564	8	1,188	9	64	18	1,816	9.1	
Valid responses =	6,703	34	12,858	65	356	2	19,917	97.1	

Invalid responses include no response or multiple responses.

51. How do you usually describe yourself?

	Male		Female		Unknown		Total		
	Freq.	Pct.	Freq.	Pct.	Freq.	Pct.	Freq.	Pct.	
White - not Hispanic (includes	5,105	75	10,124	78	191	26	15,420	75.2	
Black - not Hispanic	271	4	660	5	25	3	956	4.7	
Hispanic or Latino	484	7	852	7	75	10	1,411	6.9	
Asian or Pacific Islander	764	11	1,102	9	51	7	1,917	9.3	
American Indian or Alaskan	104	2	215	2	9	1	328	1.6	
Other	322	5	466	4	22	100	810	3.9	

Valid responses = all responses and blanks: since multiple responses were possible, more than 100% may be included.

52. Are you an international student?

	Male		Female		Unknown		Total		
	Freq.	Pct.	Freq.	Pct.	Freq.	Pct.	Freq.	Pct.	
1 Yes	389	6	518	4	26	7	933	4.7	
2 No	6,297	94	12,309	96	326	93	18,932	95.3	
Valid responses =	6,686	34	12,827	65	352	2	19,865	96.9	

Invalid responses include no response or multiple responses.

53. What is your current relationship status?

	Male		Female		Unknown		Total		
	Freq.	Pct.	Freq.	Pct.	Freq.	Pct.	Freq.	Pct.	
1 Single	4,008	60	6,588	51	204	57	10,800	54.0	
2 Married/domestic partner	758	11	1,531	12	38	11	2,327	11.6	
3 Engaged or committed dating	1,868	28	4,502	35	102	29	6,472	32.4	
4 Separated	24	0	66	1	5	1	95	0.5	
5 Divorced	57	1	192	2	6	2	255	1.3	
6 Widowed	7	0	34	0	3	1	44	0.2	
Valid responses =	6,722	34	12,913	65	358	2	19,993	97.5	

Invalid responses include no response or multiple responses.

54. Where do you currently live?

	Male		Female		Unknown		Total		
	Freq.	Pct.	Freq.	Pct.	Freq.	Pct.	Freq.	Pct.	
1 Campus residence hall	2,215	33	4,798	37	122	34	7,135	35.7	
2 Fraternity or sorority house	174	3	169	1	6	2	349	1.7	
3 Other university/college	177	3	381	3	10	3	568	2.8	
4 Off-campus housing	2,417	36	4,350	34	75	21	6,842	34.2	
5 Parent/guardian's home	1,380	21	2,258	18	104	29	3,742	18.7	
6 Other	371	6	953	7	41	12	1,365	6.8	
Valid responses =	6,734	34	12,909	65	358	2	20,001	97.5	

Invalid responses include no response or multiple responses.



American College Health Association-National College Health Assessment (ACHA-NCHA) Reference Group Data Report - Fall 2007

American College Health Association

P.O. Box 28937

Baltimore, MD 21240-8937

(410) 859-1500

www.acha.org

03/19/08

FREQUENCY REPORT

Number of Surveys (n) = 20,507 Paper & Web Surveys

55. Are you a member of a social fraternity or sorority?

	Male		Female		Unknown		Total	
	Freq.	Pct.	Freq.	Pct.	Freq.	Pct.	Freq.	Pct.
1 Yes	536	8	836	7	20	6	1,392	7.0
2 No	6,153	92	12,006	94	334	94	18,493	93.0
Valid responses =	6,689	34	12,842	65	354	2	19,885	97.0

Invalid responses include no response or multiple responses.

56. How many hours a week do you work for pay?

	Male		Female		Unknown		Total	
	Freq.	Pct.	Freq.	Pct.	Freq.	Pct.	Freq.	Pct.
1 0 hours	2,851	43	4,855	38	149	42	7,855	39.4
2 1 - 9 hours	929	14	2,208	17	40	11	3,177	15.9
3 10 - 19 hours	1,046	16	2,298	18	51	14	3,395	17.0
4 20 - 29 hours	920	14	1,755	14	53	15	2,728	13.7
5 30 - 39 hours	368	6	784	6	17	5	1,169	5.9
6 40 hours	315	5	625	5	24	7	964	4.8
7 more than 40 hours	274	4	357	3	22	6	653	3.3
Valid responses =	6,703	34	12,882	65	356	2	19,941	97.2

Invalid responses include no response or multiple responses.

57. How many hours a week do you volunteer?

	Male		Female		Unknown		Total	
	Freq.	Pct.	Freq.	Pct.	Freq.	Pct.	Freq.	Pct.
1 0 hours	4,460	67	7,951	62	240	68	12,651	63.8
2 1 - 9 hours	1,953	29	4,490	35	95	27	6,538	33.0
3 10 - 19 hours	183	3	270	2	13	4	466	2.3
4 20 - 29 hours	44	1	58	1	2	1	104	0.5
5 30 - 39 hours	13	0	10	0	1	0	24	0.1
6 40 hours	13	0	13	0	2	1	28	0.1
7 more than 40 hours	16	0	8	0	1	0	25	0.1
Valid responses =	6,682	34	12,800	65	354	2	19,836	96.7

Invalid responses include no response or multiple responses.

58. Do you have any kind of health insurance (including prepaid plans such as HMOs - health maintenance organizations)?

	Male		Female		Unknown		Total	
	Freq.	Pct.	Freq.	Pct.	Freq.	Pct.	Freq.	Pct.
1 Yes	5,021	82	10,209	85	265	73	15,495	83.8
2 No	649	11	1,102	9	60	17	1,811	9.8
3 Not sure	464	8	692	6	36	10	1,192	6.4
Valid responses =	6,134	33	12,003	65	361	2	18,498	90.2

Invalid responses include no response or multiple responses.