

## CONTINUING EDUCATION KEY

- CME** identifies the CE credit hours available to physicians and physician assistants.
- CH** identifies the CE contact hours available to nurses.
- CECH** identifies the CE contact hours available to certified health education specialists.
- PsyCE** identifies the CE credit hours available to psychologists.
- NBCC** identifies the NBCC approved clock hours available to national certified counselors.
- NASW** identifies the CE credit hours available to social workers.

## FACULTY DISCLOSURE DECLARATION

It is the policy of ACHA to insure balance, independence, objectivity, and scientific rigor in all its individually sponsored or joint-sponsored educational programs. All faculty participating in any ACHA-sponsored programs are expected to disclose to the program audience:

- 1) Any relationship between speakers and commercial entities
- 2) Discussion of off-label uses of medications and/or devices
- 3) Any limitations in data cited

*This annual meeting provides numerous opportunities for physicians, physician assistants, nurses, health educators, psychologists, counselors, social workers, and pharmacists to earn continuing education credits.*

- The American College Health Association (ACHA) is accredited by the Accreditation Council for Continuing Medical Education to provide continuing medical education for physicians.

ACHA designates this educational activity for a maximum of 26.5 AMA PRA Category 1 credit(s)<sup>™</sup>. Physicians should only claim credit commensurate with the extent of their participation in the activity.

- ACHA is accredited as a provider of continuing nursing education by the American Nurses Credentialing Center's Commission on Accreditation.

ACHA designates this educational activity for a maximum of 28.5 contact hours.

- ACHA is approved by the American Psychological Association to sponsor continuing education for psychologists. ACHA maintains responsibility for this program and its content. This program has been awarded 26.5 hours of continuing education for psychologists.

- ACHA is a designated provider (#MD0011, Event #01032) of continuing education

contact hours (CECH) in health education by the National Commission for Health Education Credentialing, Inc. This program is designated for certified health education specialists (CHES) to receive up to 28.5 Category I CECH in health education.

- ACHA is an NBCC-Approved Continuing Education Provider (ACEP<sup>™</sup>) and may offer NBCC-approved clock hours for programs that meet NBCC requirements. Programs for which NBCC-approved clock hours will be awarded are identified in this program. The ACEP is solely responsible for all aspects of the program.

- This program is approved by the National Association of Social Workers (provider #886508715) for 26.5 continuing education contact hours.

*Application for CME credit has been filed with the American Academy of Family Physicians. Determination of credit is pending.*

*This activity is eligible for ACEP credit; see final CPE activity program announcement for specific details.*

*ACHA guards against discrimination in selecting faculty or participants for continuing education activities, and makes every effort to maintain awareness of individual differences with respect to the following, listed in alphabetical order: age; gender identity, including transgender; marital status; physical size; psychological/physical/learning disability; race/ethnicity; religious, spiritual, or cultural identity; sex; sexual orientation; socioeconomic status; veteran status. Faculty are chosen for their expertise to meet specific needs of trainees and their availability. Faculty and participants are not asked to identify any sensitive information and no selection is made on the basis of the individual differences listed above.*



*The U.S.S. New Jersey, the most decorated battleship in U.S. Naval history, is a floating museum and memorial on the Camden Waterfront in Philadelphia.*

Photo by Edward Savaria, Jr. courtesy of the PCVB

# ACHA 2010 ANNUAL MEETING

## SCHEDULE OF PROGRAMS AND EVENTS

### Tuesday, June 1, 2010

#### Tuesday Special Events and Information

**7:00 AM - 6:00 PM**

Registration

**8:00 AM - 12:00 AM**

**Leadership Day 2010: Leading from the Heart: Learning to Live Your Life out Loud** and **ACHA Leaders: Orientation, Roles, and Collaboration** (*Invitation only*)

See Featured Events on page 9 and TU239 and TU240 below.

**1:30 PM - 3:00 PM**

#### Section Networking Sessions

**BS278.** Nurse-Directed Health Services

**BS279.** Health Promotion

**BS285.** Nursing

**3:15 PM - 4:45 PM**

#### Affiliate Networking Sessions

**BS280.** New York State College Health Association

**BS281.** Southern College Health Association

**BS287.** Southwest and Rocky Mountain College Health Associations

#### Tuesday Meetings

**5:30 PM - 6:30 PM**

**BS099.** Continuing Nursing Education Subcommittee

**BS100.** Continuing Education for Certified Health Education Specialists Subcommittee

**BS101.** Continuing Psychology Education Subcommittee

**BS102.** Continuing Medical Education Subcommittee

**BS103.** Continuing Education for National Certified Counselors Subcommittee

**BS244.** Allies for LGBT Health Coalition

**BS245.** HIPAA/Health Information Management Coalition

**BS246.** Southern College Health Association Executive Committee

**BS248.** Spirituality, Religion, and Student Health Coalition

**BS250.** Pacific Coast College Health Association Executive Committee

**BS254.** Mid-Atlantic College Health Association Executive Committee

**BS256.** Membership Development Task Force

**BS260.** ACHA/NCHA Advisory Committee

**BS268.** Vaccines-Preventable Diseases Advisory Committee

**BS272.** Nurse-Directed Health Services Section Executive Committee

**BS273.** Nursing Section Executive Committee

**6:45 PM - 8:15 PM**

**BS251.** New York State College Health Association Executive Committee

**BS259.** Ethnic Diversity Coalition

**BS266.** Southwest College Health Association Executive Committee

**BS271.** Administration Section Executive Committee

**BS275.** Mental Health Section Executive Committee

**BS276.** Advanced Practice Clinicians Section Executive Committee

**BS286.** Pharmacy Section Executive Committee

## TUESDAY LEADERSHIP DAY

Participation in TU239 and TU240 is by invitation only. See page 9 for more information.

**8:00 AM - 10:00 AM**

**TU239. Leadership Day 2010: Leading from the Heart: Learning to Live Your Life out Loud**

CH: 2.0 CECH: 2.0 NBCC: 2.0

The attendee should be able to:

1. Discuss the "Leadership Challenge Model."
2. Identify the role students play in maintaining the meaning and value of our work.
3. Describe ways to move from the drive toward "life/work balance" to "satisfied proportions."

Presenter(s): Marsha Guenzler-Stevens, PhD, MS (University of Maryland, College Park)

**10:00 AM - 12:00 PM**

**TU240. ACHA Leaders: Orientation, Roles, and Collaboration**

CME: 1.5 CH: 1.5 CECH: 1.5 PsyCE: 1.5 NBCC: 1.5 SW: 1.5

The attendee should be able to:

1. Discuss association policies.
2. Describe specific roles and responsibilities.
3. Identify partnership opportunities within specific groups and across the entire association.

Presenter(s): Jennifer Haubenreiser, MA (Montana State University)



At Signers' Hall in the National Constitution Center, visitors can walk among life-size replicas of our nation's forefathers.

## TUESDAY PRE-CONFERENCE WORKSHOPS

Tickets are required for all pre-conference workshops, which are open to all meeting attendees (excluding spouses/domestic partners).

See Meeting Registration Form on page 13.

1:30 PM - 4:30 PM

### TU148. Campus Safety: Reshaping the Role of College Health

CME: 3.0 CH: 3.0 CECH: 3.0 PsyCE: 3.0 NBCC: 3.0 SW: 3.0

The attendee should be able to:

1. Describe recent updates to federal legislation regarding FERPA, HIPPA, and Clery Act.
2. Define the National Incident Management System and Incident Command Structure and their role on campuses.
3. Identify the roles and responsibilities of counseling professionals during critical campus emergencies.
4. Compare multiple forms of campus violence and how campuses are addressing issues of violence.

Presenter(s): Donna Barry, RN, MSN, APN, FN-CSA (Montclair State University); Ryan Aker, PhD (Mississippi State University)

### TU169. Brief Interventions during Busy Student Health Visits: Applying Motivational Interviewing Skills and Strategies

CME: 3.0 CH: 3.0 CECH: 3.0 PsyCE: 3.0 NBCC: 3.0 SW: 3.0

The attendee should be able to:

1. Describe motivational interviewing principles and techniques to decrease high-risk drinking and other risky behaviors.

2. Describe principles and content of BASICS and ASTP motivational enhancement programs designed to reduce high-risk drinking in college students.
3. Describe practical strategies to implement brief motivational interventions on campuses.
4. Discuss ways to motivate high-risk drinkers who are in denial, ambivalent about change, or "pre-contemplative."
5. Discuss ways to "think reflectively" and respond to the high-risk drinker's comments with effective reflection statements.

Presenter(s): Paul Grossberg, MD (University of Wisconsin-Madison); Jason Kilmer, PhD (University of Washington)

### TU235. Primary and Advanced Wound Closure

CME: 3.0 CH: 3.0

The attendee should be able to:

1. Discuss the characteristics of skin and soft tissue wounds and what characterizes "high risk" wounds.
2. Describe simple wound approximation and closure techniques.
3. Explain advanced wound closure techniques.

Presenter(s): James Davis, MD (Utah State University); James Jacobs, MD, PhD, FACEP (The Ohio State University)

### TU236. A Primer to Conducting Research in College Health

CME: 3.0 CH: 3.0 CECH: 3.0 PsyCE: 3.0 NBCC: 3.0 SW: 3.0

The attendee should be able to:

1. List different types of research studies.
2. Discuss strengths and limitations of different types of research.
3. Describe process of designing a research study.
4. Identify opportunities to conduct research on participant's campus or through multi-institutional collaboration.

Presenter(s): Sherri Darrow, PhD (State University of New York-Buffalo); Jane Jue, MD (University of Pennsylvania School of Medicine)

### TU237. Maximizing Your Leadership Potential: Going from Theory to Practice

CME: 3.0 CH: 3.0 CECH: 3.0 PsyCE: 3.0 NBCC: 3.0 SW: 3.0

The attendee should be able to:

1. Describe the most influential leadership theories.
2. Explain how to apply the leadership theory to the workplace.

Presenter(s): Bernard Brogan, PhD (Widener University)

## Did you know?

The Academy and College of Philadelphia, founded in 1749 by Benjamin Franklin, is considered by many to have been the first American academy. Later in 1765, Drs. John Morgan and William Shippen, Jr. founded the Medical School of the College of Philadelphia, the first medical school in North America.

On September 13, 1791, State legislation united the Academy and College of Philadelphia with the University of the State of Pennsylvania under the name the University of Pennsylvania.



Photo by Bryan Y. W. Shin

# ACHA 2010 ANNUAL MEETING

## SCHEDULE OF PROGRAMS AND EVENTS

### Wednesday, June 2, 2010

#### Wednesday Special Events and Information

**7:00 AM - 6:00 PM**

Registration

**7:30 AM - 8:45 AM**

#### Newcomers' Orientation to ACHA

Learn about ACHA's programs and services and how to get the most from your annual meeting. You'll also meet ACHA's officers and other colleagues. Section chairs will be available to introduce activities within your specialty.

**9:00 AM - 9:45 AM**

#### Presiders'/Facilitators' Orientation

All presiders and facilitators are strongly encouraged to attend this orientation meeting. Details regarding your responsibilities — including resources for technical assistance — will be discussed.

**9:00 AM - 10:00 AM**

#### Health Promotion Section New Member Welcome Session

Health Promotion Section members who are attending their first conference or those who are newer members of the section are invited to this bring-your-own-breakfast gathering following the ACHA Newcomers' Orientation to get oriented to the HP section, learn about opportunities to get involved, and meet with other HP Section members. (Please bring your breakfast!)

**9:00 AM - 10:00 AM**

#### Nurse-Directed Health Services Section New Member Welcome Session

Nurse-Directed Section members who are attending their first conference or those who are newer members of the section are invited to this bring-your-own-breakfast session following the ACHA Newcomers' Orientation. Our goal is to introduce you to the Nurse-Directed Section Executive Board, have you learn about opportunities to get involved, resources that are available to you, and to meet with other Nurse-Directed Section members.

**10:00 AM - 11:45 AM**

#### Opening General Session/Keynote Address

Join your colleagues to hear Keynote Speaker Heather Munro Prescott, PhD, Professor of History at Central Connecticut State University, give her address, "Student Bodies, Past and Present." See Featured Events on page 7 and WE016 on page 20 for more details.

**12:00 PM - 1:15 PM**

#### Student Orientation

All students are encouraged to attend this orientation customized to meet the unique needs of students.

**6:30 PM - 8:00 PM**

#### Diversity Reception

Come network and socialize with your colleagues at this reception co-hosted by the Allies for LGBT Health Coalition and the Ethnic Diversity Coalition. See Featured Events on page 10 for more details.

#### Wednesday Meetings

**12:00 PM - 1:15 PM**

- BS067.** Administration Section
- BS068.** Advanced Practice Clinicians Section
- BS069.** Clinical Medicine Section
- BS070.** Health Promotion Section
- BS071.** Mental Health Section
- BS072.** Nursing Section
- BS073.** Nurse-Directed Health Services Section
- BS074.** Pharmacy Section

**5:30 PM - 6:30 PM**

- BS243.** Ohio College Health Association Executive Committee
- BS252.** Campus Violence Coalition
- BS253.** Emerging Public Health Threats and Emergency Response Coalition
- BS255.** National Health Objectives for 2010/2020 Coalition
- BS258.** Ethics Committee
- BS261.** Sexual Health Education and Clinical Care Coalition
- BS262.** Benchmarking Advisory Committee
- BS264.** Rocky Mountain College Health Association Executive Committee
- BS265.** Mid-America College Health Association Executive Committee
- BS269.** Cultural Competency Statement Revision Task Force
- BS270.** Bylaws Committee
- BS274.** Health Promotion Section Executive Committee

**6:45 PM - 8:15 PM**

- BS263.** Alcohol, Tobacco, and Other Drugs Coalition
- BS267.** North Central College Health Association Executive Committee

## WEDNESDAY GENERAL SESSIONS

8:00 AM - 9:30 AM

### WE060. Continuing Education Workshop for Program Planners (Affiliate and Institutional)

CME: 1.5 CH: 1.5 CECH: 1.5 PsyCE: 1.5 NBCC: 1.5 SW: 1.5

The attendee should be able to:

1. Identify four principles of adult learning theory.
2. Identify elements essential to approval of educational activities for continuing education credit.
3. Describe the process for identification/disclosure of actual or potential conflict of interest.
4. Explain the rationale for post-program follow-up documentation.

Presenter(s): Eleanor Davidson, MD (Case Western Reserve University); Kathy Saichuk, MA, CHES and Drayton Vincent, LCSW, MSW, BCD (Louisiana State University); Mike Malmom-Berg, PhD (College of Wooster); Kathy MacLachlan, MS, APRN-BC (Syracuse University); Joy Himmel, PsyD, PMHCNS.BC, LPC, NCC (Pennsylvania State University, Altoona); Yvonne Mark, MD, MMS (Johns Hopkins University)

10:00 AM - 11:45 AM

### WE016. Opening General Session: Student Bodies, Past and Present

CME: 1.0 CH: 1.0 CECH: 1.0 PsyCE: 1.0 NBCC: 1.0 SW: 1.0

The attendee should be able to:

1. Describe how college and university health programs evolved in the United States.
2. Discuss past and current role of college health programs as public health agencies for campus communities.
3. Identify contemporary public health challenges facing college health.

Presenter(s): Heather Munro Prescott, PhD (Central Connecticut State University)

**EARLY BIRD REGISTRATION DEADLINE IS APRIL 9.** Save money off your registration fees by registering prior to this date.

1:45 PM - 5:15 PM

### WE094. Update in Clinical Psychopharmacology

CME: 3.0 CH: 3.0 CECH: 3.0 PsyCE: 3.0 NBCC: 3.0 SW: 3.0

The attendee should be able to:

1. List the major classes of psychotropic medications, their indications, and major side effects.
2. List medication treatment options for each major psychiatric disorder.
3. Describe the significant mechanisms of drug interaction.

Presenter(s): Peter DeMaria, MD (Temple University)

1:45 PM - 3:15 PM

### WE018. An Analysis of HITECH (Health Information Technology Economic and Clinical Health Act) and Office Operations

CME: 1.5 CH: 1.5 CECH: 1.5 PsyCE: 1.5 NBCC: 1.5 SW: 1.5

The attendee should be able to:

1. Explain the changes that HITECH brought about.
2. Describe the advantages of billing.
3. Explain the process of enhancing revenue through student health services billing.
4. Discuss the legal and ethical boundaries related to HITECH compliance.

Presenter(s): Joan Kiel, PhD, CHPS (Duquesne University); Vicky Rosa, RN, MHA (Butler University)

### WE019. Alcohol Use, Greek Life, and Social Norms Campaign Messaging

CH: 1.5 CECH: 1.5 SW: 1.5

The attendee should be able to:

1. Compare the balance of risk and protective behaviors among members of fraternities and sororities with other students.
2. Describe evidence of effective messaging for members of fraternities and sororities.
3. Discuss design of campus-wide social norms campaigns based upon effective messaging in a similar university population.

Presenter(s): Lydia Killos, MEd, PhD (University of Virginia)

### WE056. Female Genital Cutting: Increasing Knowledge to Provide Culturally Sensitive Care to International Students and Immigrant Women

CME: 1.5 CH: 1.5 CECH: 1.5 PsyCE: 1.5 NBCC: 1.5 SW: 1.5

The attendee should be able to:

1. Define female genital cutting.
2. Discuss the three categories of female genital cutting outlined by the World Health Organization.
3. Explain the importance of this practice to many women.

Presenter(s): Teri Aronowitz, PhD, FNP-BC (Boston University); Shoshana Aronowitz (McGill University)

### WE089. Examining Smoking and Disordered Eating Behaviors

CME: 1.5 CH: 1.5 CECH: 1.5 PsyCE: 1.5 NBCC: 1.5 SW: 1.5

The attendee should be able to:

1. Identify relevant factors in smoking prevalence and behavior.
2. Describe the overlap between eating disorder risk and smoking behavior among college females.
3. Discuss treatment and prevention.

Presenter(s): Melissa Napolitano, PhD, and Sharon Hayes, MS (Temple University); Susan Himes, PhD (Mayo Clinic)

### WE101. Updates in College Health: A Review of the Literature

CME: 1.5 CH: 1.5

The attendee should be able to:

1. Define evidence-based medicine and its relevance to college health.
2. Describe common research study designs.
3. Explain newly published important research studies and their relevance to clinical practice.

Presenter(s): Samuel Seward, Jr., MD (Columbia University); Sarah Van Orman, MD (University of Wisconsin-Madison); David Reitman, MD (George Washington University); Cheryl Flynn, MD (Syracuse University)

# ACHA 2010 ANNUAL MEETING

## SCHEDULE OF PROGRAMS AND EVENTS

### WEDNESDAY GENERAL SESSIONS

1:45 PM - 3:15 PM (CONT.)

#### **WE111. Managing beyond Meetings: Mobilizing People and Resources during a Public Health Crisis**

CME: 1.5 CH: 1.5 CECH: 1.5 SW: 1.5

The attendee should be able to:

1. Explain how during a public health crisis you can move beyond the silo mentality and leverage campus support.
2. Discuss operational assumptions to utilize during a public health crisis.

*Presenter(s): Daniel Bruey, MBA, and Edythe Cook, MPA (American University)*

#### **WE114. Application of an Integrated Depression Care Delivery Model: Lessons Learned from the National College Depression Partnership (NCDP)**

CME: 1.5 CH: 1.5 CECH: 1.5 PsyCE: 1.5 NBCC: 1.5 SW: 1.5

The attendee should be able to:

1. Define depression care integration.
2. Compare models of implementation.
3. List benefits and challenges.

*Presenter(s): Michael Klein, PhD (New York University); Joe Behen, PhD (School of the Art Institute of Chicago); Leigh White, MD (Michigan State University); Eric Wood, PhD (Texas Christian University)*

#### **WE116. Student Clinic Volunteers in a College Health Center**

CH: 1.5 CECH: 1.5

The attendee should be able to:

1. Identify key components of a successful clinic volunteer program.
2. List learning outcomes of college students involved in a clinic volunteer program.
3. Discuss benefits of a clinic volunteer program.

*Presenter(s): Katherine Mosteller, BSN (University of Texas-Austin)*

#### **WE156. A Model for Outreach, Education, and Intervention: Campus-based Emergency Medical Services**

CME: 1.5 CH: 1.5 CECH: 1 SW: 1.5

The attendee should be able to:

1. List the components for consideration in developing collaboration between campus health services and EMS.

2. Discuss the common goals held by health services and EMS in campus outreach.
3. Describe resources that can enhance a cohesive campus health care team.

*Presenter(s): Joshua Marks, MD, and George Koenig, DO, MS (National Collegiate Emergency Medical Services Foundation)*

#### **WE165. Evidence-based Patient Screening and Interventions That Will Impact the Health of Your Campus Community**

CME: 1.5 CH: 1.5 CECH: 1.5 NBCC: 1.5 SW: 1.5

The attendee should be able to:

1. Identify current evidence-based screening questions for tobacco use, high-risk drinking, and depression.
2. Describe ways to transition from screening questions to effective clinician-delivered interventions.
3. Discuss cost effectiveness analysis and why certain prevention issues and tests do not meet criteria for routine screening.

*Presenter(s): James Schaus, MD, and Michael Deichen, MD (University of Central Florida)*

#### **WE192. Health Promotion Hot Topics: Why Campus Health Is Indispensable to the Academic Mission — Making the Case, Part 1**

CME: 1.5 CH: 1.5 CECH: 1.5 SW: 1.5

The attendee should be able to:

1. Identify challenges and opportunities facing U.S. institutions of higher education.
2. Describe the major research findings regarding student success.
3. Compare standards of health promotion practice with standards of student affairs practice.
4. Explain key examples of opportunities for campus health services/programs to link their work with the academic mission.

*Presenter(s): Luoluo Hong, MPH, PhD (University of Hawaii-Hilo)*

3:45 PM - 5:15 PM

#### **WE039. The Mind-Body Team: Integrating Mindfulness in College Health**

CME: 1.5 CH: 1.5 CECH: 1.5 PsyCE: 1.5 NBCC: 1.5 SW: 1.5

The attendee should be able to:

1. Describe how and why mindfulness-based interventions are consistent with the mission of college health centers.
2. Identify the roles of multidisciplinary providers in offering and promoting mind-body interventions.
3. Discuss three guidelines for best practices in integrating mind-body interventions in college health.

*Presenter(s): Robin Boudette, PhD, Deanna Nobleza, MD, Victoria Rosenfeld, RD, CSSD, Shefalika Gandhi, MS, MSW, and Laura Rubenstein (Princeton University)*

#### **WE043. The Role of Students in Formulating Health Policy on Campus**

CME: 1.5 CH: 1.5 CECH: 1.5 SW: 1.5

The attendee should be able to:

1. Explain the importance of student involvement in campus health policy formulation.
2. Discuss the steps required for successful health policy proposal by students.

*Presenter(s): Wobo Bekwelem, MD, and Heather Horton (University of Minnesota)*

#### **WE048. College Men: A Look at Their Health Needs and How They Are, or Aren't, Being Met**

CME: 1.5 CH: 1.5 CECH: 1.5 PsyCE: 1.5 NBCC: 1.5 SW: 1.5

The attendee should be able to:

1. Identify health issues that affect men.
2. Describe current programs that target men's health.
3. List resources for information regarding men's health.

*Presenter(s): Susan Milstein EdD, MA, and Elizabeth Ridings, MA (Montgomery College)*

*Schedule subject to change without notice.*

Visit [www.acha.org/AnnualMeeting10](http://www.acha.org/AnnualMeeting10) for the latest programming and event updates and refer to the **FINAL PROGRAM** available onsite.

## WEDNESDAY GENERAL SESSIONS

3:45 PM - 5:15 PM (CONT.)

### WE085. Responding to a Public Health Challenge: H1N1

CME: 1.5 CH: 1.5 CECH: 1.5 SW: 1.5

The attendee should be able to:

1. Describe the epidemiology of the Novel Influenza H1N1 outbreak.
2. Discuss strategies employed by various campuses in responding to outbreaks.
3. Identify key lessons learned in responding to the public health challenge presented by Novel Influenza H1N1.

Presenter(s): Anita Barkin, DrPH, MSN, CRNP (Carnegie Mellon University)

### WE107. Student Health Insurance Plans and Effective Plan Governance

CME: 1.5 CH: 1.5 CECH: 1.5 SW: 1.5

The attendee should be able to:

1. Discuss ACHA Standard III from ACHA's Standards for Student Health Insurance/Benefits Programs in relation to his/her own institution.
2. Identify a governance framework that can be modified to the learner's own institution.
3. Describe how plan governance can be translated into action.

Presenter(s): Barbara Rabinowitz (University of California-Los Angeles)

### WE130. Nine Don't-Miss Diagnoses in College Health

CME: 1.5 CH: 1.5

The attendee should be able to:

1. Describe presentation and identification of nine don't-miss diagnoses relevant to college health.
2. Discuss risk management concerns related to suspected or confirmed high-risk diagnoses.

Presenter(s): James Jacobs, MD, PhD (The Ohio State University)

### WE139. Benchmarking Committee — 2010

CME: 1.5 CH: 1.5 CECH: 1.5 PsyCE: 1.5 NBCC: 1.5 SW: 1.5

The attendee should be able to:

1. Describe the results of the 2008-09 Pilot Clinical Benchmarking Survey and its implications for future surveys.
2. Identify the recommendations of the committee's fall 2009 meeting to develop a learning outcomes survey.
3. Discuss data from recent administrative benchmarking surveys.

Presenter(s): Sarah Van Orman, MD (University of Wisconsin); Allan Markus, MD, MS, MBA (Arizona State University)

### WE150. High Risk and Severely High Risk: Identifying and Treating College Students with Serious Alcohol Problems

CME: 1.5 CH: 1.5 CECH: 1.5 PsyCE: 1.5 NBCC: 1.5 SW: 1.5

The attendee should be able to:

1. Identify risk factors in college students.
2. Compare the differences in alcohol and drug consumption and experience of negative consequences between students before and after their participation in College Alcohol and Substance Education (CASE), a program mandated for violators of residence halls' alcohol-use policies and AOD related legal citations.
3. Identify differences in students' needs as evidenced by new screening protocol.

Presenter(s): Ian Kaminsky, PhD, and Elizabeth Downing, MD (University of California, Santa Barbara)

### WE172. Going Global: Providing Quality Health Services to a "Global" University

CME: 1.5 CH: 1.5 CECH: 1.5 PsyCE: 1.5 NBCC: 1.5 SW: 1.5

The attendee should be able to:

1. Discuss pre-departure processes to ensure that students have the best possible abroad experience.
2. Identify the challenges in providing health services across the globe.
3. Describe the process of establishing a global health network at sites and programs abroad.

Presenter(s): Carlo Ciotoli and Zoe Ragouzeos, LCSW (New York University)

### WE197. Health Promotion Hot Topics: Why Campus Health Is Indispensable to the Academic Mission — Making the Case, Part 2

CME: 1.5 CH: 1.5 CECH: 1.5 SW: 1.5

The attendee should be able to:

1. Explain key examples of opportunities for campus health services/programs to link their work with the academic mission (continued from Part 1).
2. Discuss the application of the "language" and "culture" of the academy to student health endeavors.

Presenter(s): Luoluo Hong, MPH, PhD (University of Hawaii-Hilo)

### WE219. Nursing Grand Rounds

CME: 1.5 CH: 1.5

The attendee should be able to:

1. Identify some of the essential elements of a nursing assessment.
2. Discuss information, actions and results of cases presented and determine if you would have done anything differently.
3. Identify clinical findings that are useful in developing the nursing and medical diagnosis.

Presenter(s): Charley Bradley, BPS, RN-BC (Dartmouth College)

**NOT A MEMBER?** Join ACHA today and receive timely insights on current practices and resources through the *Action* quarterly newsletter. Visit [www.acha.org/Membership/Membership\\_Categories.cfm](http://www.acha.org/Membership/Membership_Categories.cfm) for more information on other ACHA member benefits.



# ACHA 2010 ANNUAL MEETING

## SCHEDULE OF PROGRAMS AND EVENTS

### Thursday, June 3, 2010

#### Thursday Special Events and Information

**7:00 AM - 3:45 PM**

Registration

**7:00 AM**

**Opening Breakfast with Exhibitors**

**7:00 AM - 8:00 AM**

**Faith-based Fellowship**

Connect with fellow attendees from faith-based schools and/or individuals of faith to discuss resources and special interest groups.

**5:30 PM - 6:30 PM**

**Open Forum and Reports to ACHA's Board of Directors**

**7:00 PM - 9:00 PM**

**Awards/Fellows Dinner**

See Featured Events on page 10 for more information. Tickets are required for the dinner. See Meeting Registration Form on page 13.

#### Thursday Meetings

**12:00 PM - 1:15 PM**

- BS078.** Central College Health Association
- BS079.** Mid-America College Health Association
- BS080.** Mid-Atlantic College Health Association
- BS081.** New England College Health Association
- BS082.** New York State College Health Association
- BS083.** North Central College Health Association
- BS085.** Ohio College Health Association
- BS086.** Pacific Coast College Health Association
- BS087.** Rocky Mountain College Health Association
- BS088.** Southern College Health Association
- BS089.** Southwest College Health Association

### THURSDAY GENERAL SESSIONS

**8:00 AM - 9:30 AM**

**TH020. Clickers or Posters? Evaluating the Effectiveness of Two Types of Social Norms Media**

CH: 1.5 CECH: 1.5 SW: 1.5

The attendee should be able to:

1. Contrast data to decide which type of social norms presentation may be most effective at their school.
2. Discuss the design of social norms media campaigns and ways to create messaging to which students are most receptive.

*Presenter(s): Lydia Killos, MEd, PhD (University of Virginia)*

**TH035. Implementing the ACHA-NCHA: What New Users Need to Know**

CME: 1.5 CH: 1.5 CECH: 1.5 PsyCE: 1.5 NBCC: 1.5 SW: 1.5

The attendee should be able to:

1. Describe three steps to be completed before ACHA-NCHA survey implementation.
2. Compare the advantages and disadvantages of paper surveying and web-based surveying.

3. List three ways to increase response rates.

*Presenter(s): Mary Hoban, PhD, CHES, and Victor Leino, PhD (American College Health Association)*

**TH041. Shift of College Sports Medicine Services under the Umbrella of Student Health**

CME: 1.5 CH: 1.5 CECH: 1.5 SW: 1.5

The attendee should be able to:

1. Identify advantages of medically supervised delivery of athletic training services.
2. Define ways to improve ongoing educational opportunities for staff and students.
3. Describe factors that medically supervised athletic training services contribute to the enhancement of working conditions for athletic trainers.

*Presenter(s): Matthew Pecci, MD, and Mark Laursen, MS (Boston University)*

**TH044. Optimizing the Educational Experience for Students with ADHD: A Multidisciplinary Approach**

CME: 1.5 CH: 1.5 CECH: 1.5 PsyCE: 1.5 NBCC: 0 SW: 1.5

The attendee should be able to:

1. Explain the process of obtaining academic accommodations for students with ADHD and other learning disabilities.

2. Identify the role of health education in assisting students with ADHD to overcome the challenges of a college environment.
3. Discuss the principals of an optimal multifaceted treatment approach for college students with ADHD.

*Presenter(s): Mark Thomas, MD, Judy Thorpe, MEd, and Michelle Harcrow, MS (University of Alabama)*

**TH054. Depression Care: Using the Chronic Care Model in a University Health Setting**

CME: 1.5 CH: 1.5 CECH: 1.5 PsyCE: 1.5 NBCC: 1.5 SW: 1.5

The attendee should be able to:

1. Identify background information about depression.
2. Describe the components of the Chronic Care Model.
3. Discuss the review of literature.
4. Discuss the methodology of the study.

*Presenter(s): Roxanne Wolfram, MSN (Indiana University South Bend)*

## THURSDAY GENERAL SESSIONS

### 8:00 AM - 9:30 AM (CONT.)

#### TH071. Developing a Preventive Health Care Plan for a College-Aged Student: A Pharmacists' Perspective

CH: 1.5 CECH: 1.5 SW: 1.5

The attendee should be able to:

1. Identify serious infectious illnesses occurring in the 18-25 year age range that are targets for vaccinations.
2. Describe three points in time when the human papillomavirus vaccine can be administered for prevention of cervical cancer.
3. Discuss the development of an age-based preventive care plan for screenings or drug therapy.

Presenter(s): Grace Earl, PharmD (University of the Sciences in Philadelphia)

#### TH095. Herbal Medications in College Health: Issues of Safety and Efficacy

CME: 1.5 CH: 1.5 CECH: 1.5 PsyCE: 1.5 NBCC: 1.5 SW: 1.5

The attendee should be able to:

1. Compare issues of safety of herbal medications vs. traditional prescription medications.
2. Discuss the evidence related to herbal medications that can affect the mental and physical health of college students.
3. Identify sources of valid information for herbal/alternative medications.

Presenter(s): Cheryl Flynn, MD, MS, MA (Syracuse University)

#### TH106. HIV Testing as Routine Health Care on College Campuses

CME: 1.5 CH: 1.5 CECH: 1.5 SW: 1.5

The attendee should be able to:

1. Compare models of HIV testing.
2. Identify challenges to routine HIV testing.
3. Discuss strategies for implementing routine HIV testing.

Presenter(s): Lee Heerten and James Guest, MD (University of Nebraska-Lincoln)

#### TH123. Developing and Maintaining an Impaired Student Recovery on Campus

CME: 1.5 CH: 1.5 CECH: 1.5 NBCC: 1.5 SW: 1.5

The attendee should be able to:

1. Explain an Impaired Student Recovery Area and the impact this has on the college and community.
2. List the benefits for the college and community of utilizing an Impaired Student Recovery Area.
3. Discuss the liability issues surrounding care.

Presenter(s): Carl Shaner, RN, MSN, and Elliott Strickland, MEd (Pennsylvania College of Technology)

#### TH152. Beyond Alcohol: Accessing and Utilizing Other Drug Data

CME: 1.5 CH: 1.5 CECH: 1.5 PsyCE: 1.5 NBCC: 1.5 SW: 1.5

The attendee should be able to:

1. Identify college student use trends among college students in the United States through national data sources (i.e., ACHA-NCHA, MTF, Core Survey).
2. Compare the access to ATOD surveys that could be used with college students.
3. Discuss data sources that explore prescription drugs as a primary example.

Presenter(s): Steven Lux, MS (Northern Illinois University); Katie Dunker, MS (The University of Denver); Laura Talbot, PhD, CHES (University of Alabama at Birmingham); Stacy Andes, MA (Villanova University)

#### TH155. Assessing Student Health Center Staff Satisfaction (and How to Respond When Employees Tell You What They Really Think!)

CME: 1.5 CH: 1.5 CECH: 1.5 NBCC: 1.5 SW: 1.5

The attendee should be able to:

1. Describe a survey instrument to assess employee satisfaction.
2. Identify methods for data analysis.
3. Discuss methodology for outcome assessment.

Presenter(s): Mark Shaw, MS (University of Washington)

#### TH227. Modified Evidence- or Theory-Based Programs on College Campuses Today

CME: 1.5 CH: 1.5 CECH: 1.5 PsyCE: 1.5 NBCC: 1.5 SW: 1.5

The attendee should be able to:

1. Identify at least three different evidence- or theory-based programs modified at various campuses.
2. Describe core elements and key characteristics of EB/TB programs and potential adaptations to meet campus needs.
3. Discuss how to link evaluation to core elements and key characteristics of the programs in order to improve program outcomes.

Presenter(s): Michael Tims, MS (Tulane University); Dennis Martell, PhD (Michigan State University)

### 10:00 AM - 11:30 AM

#### TH017. Effectiveness of Social Norms Marketing Campaigns: Five Site Replication across Eight Years

CME: 1.5 CH: 1.5 CECH: 1.5 SW: 1.5

The attendee should be able to:

1. Compare the role and value of effectiveness studies and replication in the context of effectiveness studies.
2. Identify the settings, data and analyses for this study.
3. Discuss the study outcome(s).

Presenter(s): Adrienne Keller, PhD (National Social Norms Institute, University of Virginia)

#### TH026. Narcotics Overdose Prevention and Education

CME: 1.5 CH: 1.5 CECH: 1.5 PsyCE: 1.5 NBCC: 1.5 SW: 1.5

The attendee should be able to:

1. Describe trends in drug misuse and abuse that underlie the current nationwide drug overdose death crisis.
2. Describe the drug overdose death risk profile and identify vulnerable students.
3. Discuss drug overdose prevention and intervention strategies relevant to all campus communities.

Presenter(s): Gary Martin, EdD (Lynn University); Captain Jeffery Lindskoog (Palm Beach County Sheriff's Office); Karen Perry (Narcotics Overdose and Prevention and Education Task Force)

Schedule subject to change without notice.

Visit [www.acha.org/AnnualMeeting10](http://www.acha.org/AnnualMeeting10) for the latest programming and event updates and refer to the FINAL PROGRAM available onsite.

# ACHA 2010 ANNUAL MEETING

## SCHEDULE OF PROGRAMS AND EVENTS

### THURSDAY GENERAL SESSIONS

10:00 AM - 11:30 AM (CONT.)

#### TH058. Developing a Student Advisory Council

CME: 1.5 CH: 1.5 CECH: 1.5

The attendee should be able to:

1. Identify the members of the committee.
2. List activities.
3. Describe our goals.

Presenter(s): Prathiba Pandian (The University of Texas at Austin)

#### TH098. Facebook and MySpace on the College Campus

CME: 1.5 CH: 1.5 CECH: 1.5 PsyCE: 1.5 NBCC: 1.5 SW: 1.5

The attendee should be able to:

1. Discuss the use of social networking websites on college campuses.
2. Describe the types of social networking websites college students use.
3. Identify tips for intervention with college students.

Presenter(s): Marcus Hotaling, PhD (Union College)

#### TH102. Developing a Statewide Assessment for Health Needs of Student Veterans

CME: 1.5 CH: 1.5 CECH: 1.5 PsyCE: 1.5 NBCC: 1.5 SW: 1.5

The attendee should be able to:

1. Explain the current information regarding veterans as first-time or returning students.
2. Identify at least three essential components of a needs assessment for student veterans.
3. Define at least three strategies for utilizing needs assessment data.

Presenter(s): William Smith, BSW, MS (University of Missouri-Kansas City); Leah Horn, MPH (Suicide Prevention Resource Center, Education Development Center, Inc.)

**EARLY BIRD REGISTRATION DEADLINE IS APRIL 9.** Save money off your registration fees by registering prior to this date.

#### TH124. National College Depression Partnership (NCDP): Improving Disparities in Depression Treatment for Underrepresented Populations

CME: 1.5 CH: 1.5 CECH: 1.5 PsyCE: 1.5 NBCC: 1.5 SW: 1.5

The attendee should be able to:

1. Describe a national health care improvement project in college health aimed at measuring and improving the quality of depression identification and treatment.
2. Define evidence-based depression care that may reduce disparities among diverse college student populations.
3. Describe differences in adequacy of care and treatment outcomes for minority students.

Presenter(s): Henry Chung, MD, and Michael Klein, PhD (New York University)

#### TH125. Doxycycline and TMP-SMX: Old, Cheap, and Vital

CME: 1.5 CH: 1.5

The attendee should be able to:

1. Discuss the clinical pharmacology of doxycycline.
2. Discuss the clinical pharmacology of trimethoprim-sulfamethoxazole.
3. Compare medication pricing with other relevant courses of treatment.

Presenter(s): James Jacobs, MD, PhD (The Ohio State University)

#### TH133. Transitioning Concepts of Excellence into Practice . . . Two Years of Experience

CH: 1.5

The attendee should be able to:

1. Define current concepts of excellence and how it relates to the role of the college health nurse.
2. Identify the successful components of a project development process which results in an effective outcome.
3. Describe three successful examples of outcomes with this improved practice model.

Presenter(s): Paula Jessen, RN, BC, MPA, and Donna Vose, RN, BC (University of Connecticut)

#### TH180. Stroke in Young Adults

CME: 1.5 CH: 1.5 SW: 1.5

The attendee should be able to:

1. Describe the risk factors for stroke.
2. List the common presenting symptoms and signs.
3. Discuss prevention and treatment of strokes.

Presenter(s): Victoria Judd, MD, MBA (University of Utah)

#### TH207. The Clinical Spectrum of Obsessive Compulsive Disorder

CME: 1.5 CH: 1.5 PsyCE: 1.5 NBCC: 1.5 SW: 1.5

The attendee should be able to:

1. Explain the diagnosis of obsessive compulsive disorder.
2. Discuss empirically-supported psychotherapeutic treatments for OCD.
3. Discuss empirically-supported psychopharmacologic treatments for OCD.
4. Compare efficacy of empirically-supported treatment approaches.

Presenter(s): Elna Yadin, PhD (University of Pennsylvania)

#### TH214. Integration of College Health and Counseling Centers: Outcome Data from the Mental Health Best Practices Task Force White Paper

CME: 1.5 CH: 1.5 CECH: 1.5 PsyCE: 1.5 NBCC: 1.5 SW: 1.5

The attendee should be able to:

1. Discuss some of the issues relevant to merger of student health and counseling centers.
2. Discuss results of task force survey.
3. Discuss implications of collected quantitative and qualitative data.

Presenter(s): Keith Anderson, PhD, and Keven Readdean, MEd (Rensselaer Polytechnic Institute); Joy Wyatt, PhD (Case Western Reserve University); Drayton Vincent, LCSW, MSW, BCD (Louisiana State University); Joy Himmel, PsyD, PMHCNS, BC, LPC, NCC (Pennsylvania State University, Altoona); Jamie Davidson, PhD, MS (University of Nevada, Las Vegas); Peter DeMaria, MD (Temple University)

## THURSDAY GENERAL SESSIONS

10:00 AM - 11:30 AM (CONT.)

### TH241. Strategic Uses of Web 2.0 Technologies for College Health Professionals

CME: 1.5 CH: 1.5 CECH: 1.5 PsyCE: 1.5 NBCC: 1.5 SW: 1.5

The attendee should be able to:

1. List new technologies that can be used to disseminate information, encourage collaboration or communication, or enhance professional development opportunities for college health professionals.
2. Identify strategies for overcoming common barriers including security and privacy considerations, staff buy-in, and sustained engagement.
3. Describe how to use interactive web-based strategies to create an online professional learning community.

Presenter(s): Carlo Ciotoli, MD, Allison Smith, MPA, and Michael Meyn (New York University)

1:45 PM - 3:15 PM

### TH003. The College Hookup Culture and Health Issues: The Current Evidence and a Student-Focused Needs Assessment Strategy

CME: 1.5 CH: 1.5 CECH: 1.5 PsyCE: 1.5 NBCC: 1.5 SW: 1.5

The attendee should be able to:

1. Discuss the current evidence of factors and other predictors that correlate with an increased likelihood of a hookup experience.
2. List potential health consequences related to hookup experiences.
3. Discuss one clinician's attempt to move evidence into practice through individualized needs assessments and outreach to students regarding health issues and the college hookup culture.

Presenter(s): Mary Bachtel, MSN, DNP-S (Emory University)

### TH024. Investigation of Sexual Health Knowledge, Attitudes, and Behavior of Incoming Freshman at the University of Texas at Austin

CME: 1.5 CH: 1.5 CECH: 1.5 PsyCE: 1.5 NBCC: 1.5 SW: 1.5

The attendee should be able to:

1. Describe sexual health knowledge, attitudes, and behavior (KABs) of first-year college students.
2. Explain the benefits of investigating sexual health KABs in unique university populations.
3. Identify demographic factors that affect sexual health KABs.

Presenter(s): Gulielma Fager, MPH (University of Texas at Austin)

### TH079. Beyond Amethyst and Social Norms: Rethinking the Approach to Alcohol Use by College Students

CME: 1.5 CH: 1.5 CECH: 1.5 PsyCE: 1.5 NBCC: 1.5 SW: 1.5

The attendee should be able to:

1. Describe the best practice approaches that have been used to address alcohol use by college students.
2. Discuss the problems of alcohol use in the general community.
3. Describe community-wide approach to alcohol control.

Presenter(s): Edward Ehlinger, MD, MSPH (University of Minnesota-Minneapolis)

### TH149. Vital Roles for the Primary Care Clinic in a Systems Approach to Students with Mental Health Problems

CME: 1.5 CH: 1.5 CECH: 1.5 PsyCE: 1.5 NBCC: 1.5 SW: 1.5

The attendee should be able to:

1. Describe two types of handoff situations that can occur in primary care with a student experiencing mental health problems.
2. Identify two examples of different mood states associated with suicidality.

3. Identify data from the literature supporting patient adherence to medication in order to prevent relapse from depression.

Presenter(s): Daniel Ford, MD, MPH (Johns Hopkins University School of Medicine); Eleanor Davidson, MD (Case Western Reserve University)

### TH188. Tips for Caring for the Uninsured: A Guide Based on One's State's Possibilities

CME: 1.5 CH: 1.5 CECH: 1.5 SW: 1.5

The attendee should be able to:

1. Describe briefly some of the statistics about the uninsured college population.
2. Identify how and where to look for health care for the uninsured.
3. Identify for attendees examples of and sources for care for the uninsured.

Presenter(s): Bev McCoy, RN, MS, FNP (Arizona State University, Polytechnic Campus)

### TH200. "Oh, My Aching Back!" Back Pain as a Detriment to Academic Performance

CME: 1.5 CH: 1.5

The attendee should be able to:

1. Describe the anatomy and biomechanics of the back.
2. Discuss common back injuries and their causes.
3. Explain the evaluation and treatment procedures for back injuries.
4. Identify both rehabilitation techniques and prevention of back injuries.

Presenter(s): Lori Dewald, EdD, ATC, CHES (Salisbury University)

### TH203. Understanding the Returning Veterans

CME: 1.5 CH: 1.5 CECH: 1.5 PsyCE: 1.5 NBCC: 1.5 SW: 1.5

The attendee should be able to:

1. Explain demographic makeup and cultural variables associated with veterans.
2. Describe common strengths and challenges of veterans.
3. Identify interventions and services to aid veterans with challenges as necessary.

Presenter(s): Julia Hoffman, PsyD (National Center for PTSD/VA Palo Alto Health Care System)

Schedule subject to change without notice.

Visit [www.acha.org/AnnualMeeting10](http://www.acha.org/AnnualMeeting10) for the latest programming and event updates and refer to the FINAL PROGRAM available onsite.

# ACHA 2010 ANNUAL MEETING

## SCHEDULE OF PROGRAMS AND EVENTS

### THURSDAY GENERAL SESSIONS

1:45 PM - 3:15 PM (CONT.)

#### TH213. New Drug Update

CH: 1.5

The attendee should be able to:

1. Describe new drugs that are likely to be prescribed/dispensed by college health care providers.
2. Compare the role of these new medications with medications currently available.

Presenter(s): *Lauren McCluggage, PharmD, BCPS (Philadelphia College of Pharmacy)*

#### TH217. ACHA-NCHA 2010 Update

CME: 1.5 CH: 1.5 CECH: 1.5 PsyCE: 1.5 NBCC: 1.5 SW: 1.5

The attendee should be able to:

1. Identify trends in ACHA-NCHA data from 2000-2008.
2. Describe results of the reliability and validity analysis of the ACHA-NCHA II.
3. List findings from new items added to the ACHA-NCHA II in fall 2009.

Presenter(s): *Mary Hoban, PhD, CHES, and E. Victor Leino, PhD (American College Health Association); Pat Ketcham, PhD, CHES (Oregon State University); Alejandro Martinez, PhD (Stanford University)*

#### TH218. Ophthalmology in Primary Care: A Student Health Perspective

CME: 1.5 CH: 1.5

The attendee should be able to:

1. Discuss the basic eye exam in a primary care setting.
2. Identify patient complaints that herald significant eye disease.
3. Define treatment guidelines for basic eye diseases.

Presenter(s): *Thomasine Gorry, MD, MGA (University of Pennsylvania)*

#### TH231. Update on Epidemiology and Management of Norovirus

CME: 1.5 CH: 1.5

The attendee should be able to:

1. Describe the current epidemiologic trends in norovirus infections and outbreaks.
2. Discuss current guidelines for assessment and management of norovirus infections.

3. Discuss strategies for prevention and control of norovirus outbreaks on college campuses.

Presenter(s): *Aron Hall, DVM, MSPH (U.S. Centers for Disease Control and Prevention)*

3:45 PM - 5:15 PM

#### TH008. The Tired Student — Fatigue and Sleep Disorders in College Students

CME: 1.5 CH: 1.5 CECH: 1.5 PsyCE: 1.5 NBCC: 1.5 SW: 1.5

The attendee should be able to:

1. Differentiate a "normal" sleep pattern for healthy college students and disordered sleeping patterns.
2. Identify a differential diagnoses for debilitating fatigue symptoms.
3. Discuss how to work-up and treat a student complaining of significant fatigue or sleep problems.

Presenter(s): *David Reitman, MD, MBA (George Washington University)*

#### TH031. Management of Common Orofacial and Dental Issues in College Health

CME: 1.5 CH: 1.5

The attendee should be able to:

1. Describe the evaluation and management of odontogenic infections in college health.
2. Discuss the evaluation and management of dental trauma in college health.
3. Discuss the evaluation and management of oral soft tissue abnormalities in college health.

Presenter(s): *John Vaughn, MD (The Ohio State University)*

#### TH070. We Are the LGBT Students

CME: 1.5 CH: 1.5 CECH: 1.5 PsyCE: 1.5 NBCC: 1.5 SW: 1.5

The attendee should be able to:

1. Describe how sexual orientation and gender identity fall into the greater realm of diversity on college campuses.
2. Explain how sexual orientation and gender identity shape the overall college experience for students.

3. Identify the role of healthcare providers in providing inclusive programming and services to the LGBT community to meet individual needs.

4. Discuss ways healthcare providers can advocate for LGBT individuals on their college campuses both clinically and administratively.

Presenter(s): *Jason Robertson, EdS, MPH, CHES (University of North Carolina at Greensboro); Tara Schuster (Rensselaer Polytechnic Institute)*

#### TH103. The Relationship between Alcohol Use and Social Capital among College Students

CME: 1.5 CH: 1.5 CECH: 1.5 SW: 1.5

The attendee should be able to:

1. Explain social capital theory.
2. Describe research results examining the relationship between alcohol use and social capital.
3. Discuss implications for education and prevention programs.

Presenter(s): *Julie White, MEd (Monroe Community College); Nahoko Kawakyu-O'Connor, EdM and Margaret Yerdon, MA (University of Rochester)*

#### TH129. Millennial Generation College Students

CH: 1.5 CECH: 1.5 NBCC: 1.5 SW: 1.5

The attendee should be able to:

1. Describe three generations of students and their individual characteristics.
2. Identify current factors influencing health care for students.

Presenter(s): *Deanie Stoulig, RN, BSN, MPH (Tulane University)*

#### TH151. Is it Clean? Is it Sterile? Does it Matter? Developing an Outcomes-Driven Systems Approach to Infection Control in Your Health Service

CME: 1.5 CH: 1.5 CECH: 1.5

The attendee should be able to:

1. Define the scope of the problem.
2. Identify a national source for standards on infection control practices.
3. Describe the proposed infection control standard for AAAHC accreditation.

Presenter(s): *Eleanor Davidson, MD (Case Western Reserve University); Neil Fishman, MD (University of Pennsylvania Health System); Margaret Spear, MD (The Pennsylvania State University)*

## THURSDAY GENERAL SESSIONS

3:45 PM - 5:15 PM (CONT.)

### TH161. Dual Screening: Implementing Binge Drinking Screening with Depression Screening in a University Health Center

CME: 1.5 CH: 1.5 CECH: 1.5 PsyCE: 1.5 NBCC: 1.5 SW: 1.5

The attendee should be able to:

1. Describe an evidenced-based program of screening for binge drinking in a university setting.
2. Discuss the data obtained from the screening program.
3. Describe the interventions for the highest risk students.

Presenter(s): Carlo Ciotoli, MD, David Venarde, PhD, and Elizabeth Wolff, MD (New York University)

### TH167. The Psychodynamics of Pandemic Influenza on Campus

CME: 1.5 CH: 1.5 CECH: 1.5 PsyCE: 1.5 NBCC: 1.5 SW: 1.5

The attendee should be able to:

1. Describe the psychological and behavioral consequences of pandemic influenza.
2. Discuss the developmental tasks of college students as they may intersect with, and complicate, public health efforts.

Presenter(s): John Kolligian, PhD, MBA (Princeton University)

### TH198. Expanding Your Reach: An Integrative Health Approach to Student Wellness

CME: 1.5 CH: 1.5 CECH: 1.5 PsyCE: 1.5 NBCC: 1.5 SW: 1.5

The attendee should be able to:

1. Define integrative health care and its relationship to conventional medical approaches.
2. List the benefits of expanding the reach of student medical, mental health and health promotion services beyond conventional approaches to health.
3. Identify a range of options for integrating these approaches into student counseling and health services.
4. Describe the integrative health option that is most currently adaptable for their own institution, with an understanding of how this might evolve.

Presenter(s): Michael Anne Conley, MA (Golden Gate University)

### TH204. Mapping the Challenges of Veterans Entering College

CME: 1.5 CH: 1.5 CECH: 1.5 PsyCE: 1.5 NBCC: 1.5 SW: 1.5

The attendee should be able to:

1. Describe the most common challenges facing veterans entering college.
2. Define posttraumatic stress disorder.
3. Define traumatic brain injury.

Presenter(s): Julia Hoffman, PsyD (National Center for PTSD/VA Palo Alto Health Care System)

### TH206. Itch, Itch, Scratch, Scratch: A Dermatological Primer for Midlevel Providers

CME: 1.5 CH: 1.5

The attendee should be able to:

1. Describe the elements of an adequate dermatologic history and physical.
2. List common dermatological terminology used in documenting findings.
3. Discuss treatment options for common dermatological problems.

Presenter(s): Jolene Jernigan, RN-C, FNP (East Carolina University)

### TH211. Contraception Update

CME: 1.5 CH: 1.5 CECH: 1.5

The attendee should be able to:

1. Identify contraceptive choices in terms of use and efficacy.
2. Explain the mechanisms, efficacy, side effects, and proper use of new contraceptives that have been introduced in recent years.
3. Discuss recent research that has led to changes in contraceptive recommendations.
4. Identify possible future developments in contraceptive technology.

Presenter(s): Lauren Czosnowski, PharmD (University of the Sciences in Philadelphia)

## Not an Institutional Member?

Join ACHA as an institutional member and receive substantial savings on participation in the ACHA-National College Health Assessment, ACHA Consultation Services, and the ACHA-Patient Satisfaction Assessment Service. These programs and services help you and your institution provide your students with the highest quality health services!



American College Health Association National College Health Assessment

## ACHA-PSAS

American College Health Association Patient Satisfaction Assessment Service



American College Health Association

Visit [www.acha.org/Membership/institutional\\_membership.cfm](http://www.acha.org/Membership/institutional_membership.cfm) for more information on other benefits and a membership application

# ACHA 2010 ANNUAL MEETING

## SCHEDULE OF PROGRAMS AND EVENTS

**Friday, June 4, 2010 will be School Spirit Day!**

### Friday Special Events and Information

**7:00 AM - 3:45 PM**

**Registration**

**7:00 AM**

**Continental Breakfast with Exhibitors**

**7:00 AM - 8:00 AM**

**Disaster Medical Care in Haiti: A First-hand Account**

Donna Barry, APN (Montclair State University) will share her personal experience in providing care to earthquake victims and discuss its application to college health services.

**11:45 AM - 1:15 PM**

**Dorosin Memorial Lecture**

See Featured Events on page 7 and FR195 for more information. (Note that you may bring a lunch with you.)

**5:30 PM - 7:00 PM**

**Assembly of Representatives**

**9:00 PM - 10:00 PM**

**AA/Al-Anon Open Meeting**

### Friday Meetings

**7:00 AM - 9:00 AM**

**BD282.** American College Health Foundation Board of Directors

**7:00 AM - 8:00 AM**

**BS093.** Continuing Education Committee

**12:00 PM - 1:15 PM**

**BS094.** Students/Consumers Section

## FRIDAY GENERAL SESSIONS



Photo by Anne C. Krisensen, courtesy of PCVB

*Library Hall, the first library in the country was founded by Benjamin Franklin in 1731 and was the forerunner of the Library of Congress.*

**8:00 AM - 9:30 AM**

**FR093. Evaluating and Managing the Dual Diagnosis Patient**

CME: 1.5 CH: 1.5 PsyCE: 1.5 NBCC: 1.5 SW: 1.5

The attendee should be able to:

1. List the similarities between mental illness and addiction.
2. Describe the common ways dual diagnosis patients present and the possible causes of their presentation.
3. Describe an approach to evaluating and managing students who present with dual diagnosis problems.

Presenter(s): Peter DeMaria, MD (Temple University)

**FR097. Sixteen Universities with One Hard Waiver Insurance Plan: The University of North Carolina System Insurance Consortium**

CME: 1.5 CH: 1.5 SW: 1.5

The attendee should be able to:

1. Discuss the need for and benefits from a single hard waiver plan for all system schools.
2. Explain how the Request for Proposal was developed and the vendor chosen.
3. Describe how the insurance plan was implemented at the campuses.

Presenter(s): David Rousmaniere, MBA (University of North Carolina-Charlotte); Katrin Wesner, MS, CAPPM (University of North Carolina at Wilmington); Megan Evans, MS (University of North Carolina at Greensboro)

**FR100. Cultural Competence Express**

CME: 1.5 CH: 1.5 CECH: 1.5 NBCC: 1.5 SW: 1.5

The attendee should be able to:

1. Identify strategies to enhance cultural competence.
2. List skills to enhance cultural competence.
3. Discuss resources to promote your own cultural competence.

Presenter(s): Rosa Thomas, MPH (University of Tennessee)

**FR119. Leading Effective Discussions**

CH: 1.5 CECH: 1.5 SW: 1.5

The attendee should be able to:

1. Identify current patterns of questioning and responding.
2. Describe the effectiveness of current skill levels.
3. Explain a proven sequence of effective questioning to encourage critical and divergent thinking.

Presenter(s): Ted Coleman, PhD, RHE, CHES (California State University, San Bernardino)

**FR126. Irrelevant or Indispensable? How Does the College Community See Your Health Center?**

CH: 1.5 CECH: 1.5 SW: 1.5

The attendee should be able to:

1. Discuss the importance of marketing on public health.
2. Differentiate medical facts from media hype.

Presenter(s): Kathleen Reid, BSN, MS, NP (Western New England College)

**EARLY BIRD REGISTRATION DEADLINE IS APRIL 9.** Save money off your registration fees by registering prior to this date.

## FRIDAY GENERAL SESSIONS

### 8:00 AM - 9:30 AM (CONT.)

#### FR127. Campus as Community: Coalition-Building as a Health Promotion Tool

CME: 1.5 CH: 1.5 CECH: 1.5 SW: 1.5

The attendee should be able to:

1. Describe the health promotion theories, models and evidence that support the building of campus-wide health promotion coalitions.
2. Explain the importance of including faculty and staff in campus health promotion efforts.
3. Discuss several models of campus-wide health promotion coalitions.
4. List strategies for creating and sustaining effective campus-wide health promotion coalitions.

*Presenter(s): Alyssa Lederer, MPH, CHES (Emory University); Ann Katherine Wagner, MPH, CHES (Princeton University); Michelle Burcin, PhD, MPH, CHES (University of South Carolina); Phillip Barkley, MD (University of Florida); Danielle Dill, MPH (University of Central Oklahoma); Vladimir Oge, MPH, CHES (Georgia Institute of Technology)*

#### FR184. Multidisciplinary Management of Complicated Eating Disorder Patients on University and College Campuses: A Case-Based Discussion

CME: 1.5 CH: 1.5 CECH: 1.5 PsyCE: 1.5 NBCC: 1.5 SW: 1.5

The attendee should be able to:

1. Describe a multidisciplinary model that can be used to effectively manage eating disorder patients on university and college campuses.
2. Discuss legal and ethical dimensions of challenging eating disorder cases on university and college campuses.
3. Identify potential triggers necessitating the need for referral to a higher level of care.

*Presenter(s): Marni Greenwald, MD, and Elizabeth Wettick, MD (University of Pittsburgh)*

#### FR208. Case Studies in STIs

CME: 1.5 CH: 1.5 CECH: 1.5 SW: 1.5

The attendee should be able to:

1. Discuss challenges and controversies in testing and treatment of STIs using a case-based approach.
2. Describe clinical presentation and management strategies for common STIs in a college population.
3. Identify changes in the 2010 CDC STD Treatment Guidelines (forthcoming).

*Presenter(s): Craig Roberts, MS, PA-C (University of Wisconsin-Madison); P. Davis Smith, MD (Wesleyan University)*

#### FR209. Medical Excuse Policy

CME: 1.5 CH: 1.5 CECH: 1.5 PsyCE: 1.5 NBCC: 1.5 SW: 1.5

The attendee should be able to:

1. Describe one university's process for involving faculty in a discussion about medical excuses.
2. Describe one university's use of student input to eliminate medical excuses.
3. List several developmental tasks of this age group impacted by a medical excuse policy.

*Presenter(s): Janet Corson-Rikert MD (Cornell University); John Kolligian, PhD, MBA (Princeton University)*

#### FR210. The Impact of Medication Errors on Quality of Care

CME: 1.5 CH: 1.5

The attendee should be able to:

1. Identify the common sources of error in the medication management system.
2. Discuss the shared responsibility in preventing medication errors, including the patient's role.
3. Discuss the role of electronic prescribing in preventing medication errors.
4. Describe medication error reporting systems.

*Presenter(s): Michael Cohen, RPh, MS, ScD, FASHP (Institute for Safe Medication Practices)*

#### FR230. Assessing Female Athletic Triad

CME: 1.5 CH: 1.5

The attendee should be able to:

1. Identify the three components of the female athlete triad.
2. Identify at least one clinical intervention for each component of the female athlete triad.
3. Identify three prevention strategies for the female athlete triad.

*Presenter(s): Christina Paul, MD, and Sydney Nitzkorski, MS (University of Pennsylvania)*

### 10:00 AM - 11:30 AM

#### FR072. Developing Effective Strategic Collaborations in College Health

CME: 1.5 CH: 1.5 CECH: 1.5 SW: 1.5

The attendee should be able to:

1. Identify non-traditional avenues for strategic collaboration.
2. Identify ways to incorporate learning outcomes assessment into strategic collaborations.
3. Identify ways to provide transformational learning experiences to students while bringing value to your health, wellness, and counseling centers.
4. Identify collaborative technologies that can be used to transform the delivery of health, wellness, and mental health services.

*Presenter(s): John Vaughn, MD, Katye Miller, MS and Bong Joo Hwang, PhD (The Ohio State University)*

#### FR157. Sexperts — Let's Talk about Sex

CH: 1.5 CECH: 1.5

The attendee should be able to:

1. Identify the different STIs a student could come in contact with.
2. Describe the different methods of birth control.
3. Describe healthy relationships.

*Presenter(s): Rajika Reed, MPH, MEd (Lehigh University)*

# ACHA 2010 ANNUAL MEETING

## SCHEDULE OF PROGRAMS AND EVENTS

### FRIDAY GENERAL SESSIONS

10:00 AM - 11:30 AM (CONT.)

#### **FR182. How to Ease the Aches of Psychosomatic Illness and Hypochondriasis for College and University Healthcare Providers**

CME: 1.5 CH: 1.5 PsyCE: 1.5 NBCC: 1.5 SW: 1.5

The attendee should be able to:

1. Explain the impact of unidentified psychosomatic illness and hypochondriasis on the college and university healthcare system.
2. Identify the most common psychosomatic illnesses seen among college and university students.
3. Describe strategies to effectively treat students with psychosomatic conditions.

*Presenter(s): Amy Alson, MD (University of Virginia)*

#### **FR190. Hot Topics: Pharmacy**

The attendee should be able to:

1. List the most current clinical issues affecting college health pharmacists.
2. Describe current funding or other business-related challenges in providing college pharmacy services.
3. Describe strategies on other campuses for managing challenging pharmacy issues.

*Presenter(s): Deirdre Younger, RPh, MS (University of Maryland)*

#### **FR194. Hot Topics: Administration**

CME: 1.5 CH: 1.5 CECH: 1.5 SW: 1.5

The attendee should be able to:

1. Identify current administrative issues in college health.
2. Identify current risks and/or threats in college health administration.
3. Discuss different approaches and/or solutions to these issues with colleagues around the country.

*Presenter(s): James Boyle (University of Tennessee-Knoxville); Katrin Wesner, MS (University of North Carolina, Wilmington)*

#### **FR196. Healthy Campus 2020: What's to Come?**

CME: 1.5 CH: 1.5 CECH: 1.5 PsyCE: 1.5 NBCC: 1.5 SW: 1.5

The attendee should be able to:

1. Explain the process and data collected from ACHA members as well as other higher education professionals for the writing of Healthy Campus 2020.
2. Discuss the needed components of Healthy Campus 2020.
3. Describe the components of successful programs across the country.

*Presenter(s): Michelle Burcin, PhD, MPH, CHES (University of South Carolina); Cynthia Burwell, EdD, CHES (Norfolk State University); Jim Grizzell, MBA, MA (California State Polytechnic University, Pomona)*

#### **FR205. Name That Bug**

CME: 1.5 CH: 1.5 CECH: 1.5 SW: 1.5

The attendee should be able to:

1. Identify important infectious disease issues in a collegiate population.
2. Define emerging infections in a college population.
3. Discuss clinical techniques that would be useful in diagnosing emerging conditions.

*Presenter(s): Robert Palinkas, MD (University of Illinois at Urbana-Champaign)*

#### **FR222. Understanding Students with Asperger's and Guidelines for Supporting their Success During the College Years**

CME: 1.5 CH: 1.5 CECH: 1.5 PsyCE: 1.5 NBCC: 1.5 SW: 1.5

The attendee should be able to:

1. Identify clinical features of Asperger's syndrome.
2. Identify challenges often faced by students with Asperger's.
3. Describe interventions aimed at assisting students with Asperger's in being successful in college.

*Presenter(s): Lorraine Wolf, PhD (Boston University)*

#### **FR226. Examination of the Male Reproductive System**

CME: 1.5 CH: 1.5

The attendee should be able to:

1. Describe the anatomy of the male reproductive system and lower urinary tract.
2. Identify a systematic approach to a complete examination of the male reproductive system and lower urinary tract.
3. Explain management of common pathologic findings.
4. Discuss how communications between provider and patient can help promote wellness and harm reduction.

*Presenter(s): David Reitman, MD, MBA (George Washington University)*

#### **FR228. Adult Presentation of Genetic Disorders**

CME: 1.5 CH: 1.5 CECH: 1.5 SW: 1.5

The attendee should be able to:

1. Explain modes of inheritance.
2. List current modalities of genetic testing.
3. Describe common genetic disorders presenting in early adulthood.
4. Identify management and counseling issues.

*Presenter(s): Reed Pyeritz, MD (University of Pennsylvania)*

#### **FR233. Travel Health in College Health**

CME: 1.5 CH: 1.5

The attendee should be able to:

1. Discuss various methods for malaria prophylaxis in the college age traveler.
2. Describe common and short-term vaccination schedules for the college traveler.
3. Discuss alternative approaches to travel vaccines and medications for students with special needs.

*Presenter(s): Gregory Juckett, MD, MPH, and Jackie Mier, BSN (West Virginia University)*

## SCHEDULE OF PROGRAMS AND EVENTS

### FRIDAY GENERAL SESSIONS

11:45 AM - 1:15 PM

#### **FR195. Dorosin Memorial Lecture: SAMHSA's Campaign for Mental Health Recovery: A Comprehensive Approach to Address Mental Health Awareness, Education, Support, and Recovery for Young Adults**

CME: 1.0 CH: 1.0 CECH: 1.0 PsyCE: 1.0 NBCC: 1.0 SW: 1.0

The attendee should be able to:

1. Discuss the impact of stigma associated with mental illness, resulting social distance and effective ways to counter stigma.
2. Describe recovery as a new orientation of the mental health system with the subsequent policy and administrative issues related to this change in orientation.
3. Explain the SAMHSA Campaign for Mental Health Recovery in terms of promoting mental health.

Presenter(s): Chris Marshall (Substance Abuse and Mental Health Services Administration)

1:45 PM - 3:15 PM

#### **FR029. A Basic Introduction to Evidence-based Practice: Barriers to Implementation and Interventions**

CME: 1.5 CH: 1.5 CECH: 1.5 SW: 1.5

The attendee should be able to:

1. Identify a rationale for introducing evidence-based practice (EBP) into the college health setting.
2. Identify web sites to begin a basic search for systematic reviews and guidelines applicable to the college health setting.
3. Discuss basic strategies to introduce EBP.

Presenter(s): Karen Dahlquist, MSN, CRNP (Philadelphia University)

#### **FR032. Expand the Pharyngitis Paradigm for Adolescents and Young Adults**

CME: 1.5 CH: 1.5

The attendee should be able to:

1. Describe the pathophysiology of adolescent/young adult pharyngitis.
2. Discuss the emergence of Fusobacterium necrophorum.

3. Discuss cognitive errors in diagnosing and treating pharyngitis.

Presenter(s): Robert Centor, MD (University of Alabama-Birmingham Department of Medicine)

#### **FR036. Improving Customer Service at Your Health Center**

CME: 1.5 CH: 1.5 CECH: 1.5 SW: 1.5

The attendee should be able to:

1. Explain how to construct and protect your health center's image on campus.
2. Discuss the development of staff who willingly deliver excellent customer service.
3. Describe how to create "heroes" among your staff members.

Presenter(s): Bob Faust (University of Central Florida)

#### **FR067. Is Peer Education Working? Practical and Diverse Approaches to Educating Students**

CME: 1.5 CH: 1.5 CECH: 1.5 SW: 1.5

The attendee should be able to:

1. Identify strategies to educate students on important college health issues.
2. Identify methods to enhance retention of peer educators.
3. Describe evaluation practices that have been utilized to measure value of peer education program.

Presenter(s): Joleen Nevers, MAEd, CHES (University of Connecticut); Elizabeth Drexler-Hines, MPH, CHES (Suffolk University); Lindsey Bickers Bock, MPH (Duke University); Beth Grampetro, MPH, CHES (The Boston Conservatory); Amy Melichar, MEd, CHES (Marquette University)

#### **FR083. Integrated Primary Care Behavioral Health Clinic at a University Health Service**

CME: 1.5 CH: 1.5 CECH: 1.5 PsyCE: 1.5 NBCC: 1.5 SW: 1.5

The attendee should be able to:

1. Define integrated healthcare.
2. Discuss advantages of offering an integrated behavioral healthcare (IBHC) model in college health.
3. Describe Syracuse University's IBHC pilot program.

Presenter(s): Cheryl Flynn, MD, MS, MA, Kelly DeMartini, MS, and Jennifer Funderburk, PhD (Syracuse University)



Photo by Anthony Sinagoga courtesy of PCVB

The Liberty Bell was moved to a new home in the Liberty Bell Center in 2003 located in Independence National Historical Park.

#### **FR092. OxyContin, Vicodin, and Heroin Abuse: What's a Clinician to Do?**

CME: 1.5 CH: 1.5 PsyCE: 1.5 NBCC: 1.5 SW: 1.5

The attendee should be able to:

1. List the common opioids used and the common patterns of use.
2. List the signs and symptoms of opioid intoxication and withdrawal.
3. Describe the treatment options for opioid abusing and dependent students.
4. Explain the role of Suboxone (buprenorphine/naloxone) as a treatment option for opioid dependent students.

Presenter(s): Peter DeMaria, MD (Temple University)

#### **FR112. Applying Research on Suicidal College Students: A Campus Case Study in the Use of a Public Health Approach to Suicide Prevention**

CME: 1.5 CH: 1.5 CECH: 1.5 PsyCE: 1.5 NBCC: 1.5 SW: 1.5

The attendee should be able to:

1. Describe the prevalence and nature of suicidal behavior on college campuses.
2. Explain elements of a public health approach to suicide prevention.
3. Discuss how one campus applied public health principles to suicide prevention program development.

Presenter(s): Chris Brownson, PhD, and Marian Trattner, MSW (University of Texas at Austin); Leah Horn, MPH, CHES (Suicide Prevention Resource Center)

# ACHA 2010 ANNUAL MEETING

## SCHEDULE OF PROGRAMS AND EVENTS

### FRIDAY GENERAL SESSIONS

1:45 PM - 3:15 PM (CONT.)

#### **FR138. Addressing the Health Needs of a Diverse and Multicultural Student Population: Panel Discussion**

CME: 1.5 CH: 1.5 CECH: 1.5 NBCC: 1.5 SW: 1.5

The attendee should be able to:

1. Identify the specific health needs of multicultural student populations.
2. Discuss the challenges associated with addressing the health needs of multicultural student populations at both traditional and minority serving institutions.
3. List effective strategies and best practice methods designed to serve diverse students.
4. Describe innovative methods for addressing students' health needs.

*Presenter(s): Lasonja Kennedy, MA, CHES, and Laura Forbes, PhD, CHES (University of Alabama at Birmingham); Kianta Key (Florida A & M University); Ether Joe, BSN, MSN (Winston-Salem State University)*

#### **FR170. Using An All-Hazards Approach: Extending the Emergency Planning Continuum**

CME: 1.5 CH: 1.5 CECH: 1.5 SW: 1.5

The attendee should be able to:

1. Identify critical components of a continuity of operations plan.
2. Identify the public health issues that can occur with different disasters and how to adapt/modify the plan accordingly.
3. Identify strategies and methods for communicating plan and providing education to students, faculty and staff.

*Presenter(s): LeAnn Obrecht, RN, LIMHP, EdD, and Cindy Shultz, RN, MSN, FNP-C (University of Nebraska-Kearney)*

#### **FR185. The "A" List: A Student Approach to Dispelling Common Misconceptions about College and Altering Destructive Behavioral Patterns**

CME: 1.5 CH: 1.5 CECH: 1.5

The attendee should be able to:

1. Identify the aspects of a health and wellness website that communicates the most effectively with the student population.
2. Describe the greater efficacy of a student-generated medium rather than an administrative-based medium in influ-

encing the conceptions and actions of the student body.

3. Discuss the role of collaborating with administration when creating and promoting the website and planning for its sustainability.

*Presenter(s): Jelena Peric and Lena Van Nimwegen (Arizona State University)*

#### **FR189. Sexual Assault: Therapeutic Considerations When Body and Beliefs Come Under Attack**

CME: 1.5 CH: 1.5 CECH: 1.5 PsyCE: 1.5 NBCC: 1.5 SW: 1.5

The attendee should be able to:

1. Describe the phases of treatment involved in treating sexual assault victims.
2. Discuss how client beliefs about themselves and the world are addressed in the treatment.
3. Identify how client religious beliefs may be included in the healing process.

*Presenter(s): William Buhrow, Jr., PsyD (George Fox University)*

#### **FR224. Assessment and Management of Lower Extremity Injuries in the College Athlete**

CME: 1.5 CH: 1.5

The attendee should be able to:

1. Identify pertinent historical data to collect from a student with a sports-related injury.
2. Discuss appropriate physical examination techniques used in assessing the injured knee and ankle.
3. Discuss appropriate therapeutic management of knee/ankle sports-related injuries and identify criteria for specialty referral.

*Presenter(s): Nicole Otto, MD (University of Pennsylvania)*

3:45 PM - 5:15 PM

#### **FR076. Using the Mixed Methods Process to Inform Programs and Research on Academic Stress and Success**

CME: 1.5 CH: 1.5 CECH: 1.5 PsyCE: 1.5 NBCC: 1.5 SW: 1.5

The attendee should be able to:

1. Describe the current research published on stress and college students' academic

success as it relates to the ACHA-National College Health Assessment (ACHA-NCHA).

2. Describe how we used mixed methods research in the context of the ACHA-NCHA to further our understanding of academic stress.
3. Identify how the research can assist in identifying more targeted interventions.
4. Identify how institutions can use mixed methods research to inform future use of survey instruments.

*Presenter(s): Katy Miller MS, CHES, and Daniel Newhart, MA (The Ohio State University)*

#### **FR084. Public Health Principles and Practices: A Platform for College Health**

CME: 1.5 CH: 1.5 CECH: 1.5 PsyCE: 1.5 NBCC: 1.5 SW: 1.5

The attendee should be able to:

1. Identify the principles and practices of public health.
2. Describe the core functions of public health.
3. Describe examples of public health initiatives of college health.

*Presenter(s): Edward Ehlinger, MD, MSPH (University of Minnesota-Minneapolis)*

#### **FR099. Practical Applications of ACHA TB Guidelines**

CME: 1.5 CH: 1.5 CECH: 1.5 SW: 1.5

The attendee should be able to:

1. Explain the ACHA Guidelines for *Tuberculosis Screening and Targeted Testing of College and University Students* content.
2. Describe how two schools of differing demographics operationalize guidelines which are open to interpretation.

*Presenter(s): Susan Even, MD (University of Missouri-Columbia); Sharon McMullen, BSN (University of Pennsylvania); Brenda Johnston, MSN (Oklahoma City University)*

**EARLY BIRD REGISTRATION DEADLINE IS APRIL 9.** Save money off your registration fees by registering prior to this date.

## FRIDAY GENERAL SESSIONS

3:45 PM - 5:15 PM (CONT.)

### FR113. Quality in College Health: Achieving AAAHC Accreditation

CME: 1.5 CH: 1.5 CECH: 1.5 PsyCE: 1.5 NBCC: 1.5 SW: 1.5

The attendee should be able to:

1. List the benefits of achieving accreditation.
2. Describe the actions necessary to prepare for accreditation.
3. Describe the accreditation survey process.
4. List the core standards that apply to all organizations seeking accreditation.
5. Describe the adjunct standards that may apply to various organizations.

*Presenter(s): Margaret Spear, MD (The Pennsylvania State University); Raymond Grundman, MSN, FNP (University of Wisconsin, Milwaukee)*

### FR145. Students' Perceptions of the Impact of Health Concerns Affecting Their Academic Performance: Are There Differences between Racial and Ethnic Groups?

CME: 1.5 CH: 1.5 CECH: 1.5 PsyCE: 1.5 NBCC: 1.5 SW: 1.5

The attendee should be able to:

1. Describe how to analyze ACHA-National College Health Assessment (ACHA-NCHA) data from their home institution to identify major differences between racial and ethnic groups' reports of health concerns and academic impediments.
2. Identify ways to assess how the experience of bias impacts perception of health concerns and academic performance.
3. Discuss how to translate research into practice with regards to the role of health services addressing health disparities using Standards of Practice for Health Promotion and the CAS standards.

*Presenter(s): Susan Hochman, MPH, and Melissa Kenzig, MSPH (Columbia University)*

### FR159. College Health Nursing — Pearls of Triage, Treatment, and Stats

CME: 1.5 CH: 1.5

The attendee should be able to:

1. Define nursing triage in the college setting.
2. Discuss treatment protocols after triage.
3. Identify tools to expedite statistical analysis of triage and treatment small school style.

*Presenter(s): Chris Rooney, BSN, BC (Millersville University)*

### FR191. Hot Topics: Mental Health

CME: 1.5 CH: 1.5 CECH: 1.5 PsyCE: 1.5 NBCC: 1.5 SW: 1.5

The attendee should be able to:

1. Describe current funding challenges to providing mental health services on campus.
2. List several challenging clinical scenarios facing college mental health professionals.
3. Describe sources of up-to-date, evidence-based information for managing challenging clinical conditions.
4. Describe strategies on other campuses for managing challenging clinical scenarios.

*Presenter(s): Robert Portnoy, PhD (University of Nebraska-Lincoln)*

### FR216. Health Care Reform Update

CME: 1.5 CH: 1.5 CECH: 1.5 PsyCE: 1.5 NBCC: 1.5 SW: 1.5

The attendee should be able to:

1. Describe the health care reform legislative process.
2. Identify legislative issues related to the delivery of health care on college campuses.
3. Identify techniques used by ACHA to advocate for college students throughout the legislative process.

*Presenter(s): M. Jacob Baggott, MLS (Southern Illinois University-Carbondale); Mary Hoban, PhD, CHES (American College Health Association)*

### FR225. Update from the DEA: Your Questions Answered on Federal Drug Laws

CME: 1.5 CH: 1.5

The attendee should be able to:

1. Explain the legality of e-prescribing controlled substances.
2. Identify trends in the implementation of prescription drug monitoring programs.
3. Discuss regulatory issues regarding controlled substance prescribing, dispensing and record keeping.

*Presenter(s): Mark Caverly (Drug Enforcement Administration)*

### FR229. Adult Survivors of Pediatric Cancer

CME: 1.5 CH: 1.5 PsyCE: 1.5 NBCC: 1.5 SW: 1.5

The attendee should be able to:

1. Discuss the contributions of pediatric oncology to the field of cancer survivorship.
2. List the late complications of childhood cancer therapy.
3. Explain the developmental changes and obstacles to transition to adult-focused medical and risk-based care.

*Presenter(s): Ann Meadows, MD, MA (Abramson Cancer Center, University of Pennsylvania)*

### FR247. Personalized Medicine: Integration of Medical Genomics into College Health Care Objectives

CME: 1.5 CH: 1.5 CECH: 1.5 SW: 1.5

The attendee should be able to:

1. Discuss the general concepts of personalized medicine and its integration into genetic counseling and health care practice.
2. Describe the general concepts of inheritance and complex diseases.
3. List the different methods used to identify genetic causes of complex disease.
4. Describe the current role and impact of personalized medicine in our healthcare system.

*Presenter(s): Michael Rackover, PAC, MS (Philadelphia University)*

# ACHA 2010 ANNUAL MEETING

## SCHEDULE OF PROGRAMS AND EVENTS

### Saturday, June 5, 2010

#### Saturday Special Events and Information

7:00 AM - 11:00 AM

Registration

7:00 AM

Continental Breakfast

10:00 AM - 12:00 PM

**Presidential Session: Communicating Science to the Public**

Paul Offit, MD (University of Pennsylvania School of Medicine).  
See Featured Events on page 7 and SA012 on page 38 for more information.

#### Saturday Meetings

8:00 AM - 10:00 AM

**BD097. ACHA Board of Directors**

1:00 PM - 3:00 PM

**BS096. 2010-2011 Program Planning Committee**

All members of the 2010 and 2011 Program Planning Committee are encouraged to attend.

4:00 PM - 5:30 PM

**BD098. ACHA Executive Committee**

### SATURDAY GENERAL SESSIONS

8:00 AM - 9:30 AM

**SA033. Primary Care Dermatology Update: Acne and Dry Skin Care**

CME: 1.5 CH: 1.5

The attendee should be able to:

1. Identify three types of acne based on appearance and how treatment decisions are affected.
2. List two changes in skin care that can decrease skin dryness.

*Presenter(s): Christina Lewis, NP, MN (University of California-Los Angeles)*

**SA053. Ethical Frameworks and Practices**

CME: 1.5 CH: 1.5 CECH: 1.5 PsyCE: 1.5 NBCC: 1.5 SW: 1.5

The attendee should be able to:

1. Discuss the ACHA Ethical Principles and Guidelines.
2. Describe the application of ethical principles and guidelines to medicine, nursing, mental health, health education and allied health care services and actual challenges and dilemmas experienced.

*Presenter(s): Victoria Judd, MD, MBA (University of Utah); Paul Myers, PhD (University of Portland)*

**SA088. The EMR rEvolution — Are You and Your Providers Ready?**

CME: 1.5 CH: 1.5 CECH: 1.5 NBCC: 1.5 SW: 1.5

The attendee should be able to:

1. Describe the components of an EMR.
2. Discuss EMR selection criteria.

3. List steps an administrator can take to help ensure provider participation and engagement.

*Presenter(s): James Yankech, MS (University of Nebraska-Lincoln)*

**SA109. Creating a Culture of Cultural Competency**

CME: 1.5 CH: 1.5 CECH: 1.5 PsyCE: 1.5 NBCC: 1.5 SW: 1.5

The attendee should be able to:

1. Define cultural competency.
2. Identify cultural competency needs.
3. Describe the components of cultural competency plans.

*Presenter(s): Lee Heerten and James Guest, MD (University of Nebraska-Lincoln)*

**SA121. Renew, Reclaim and Revitalize Your Life: Your Blueprint for Success**

CH: 1.5 CECH: 1.5

The attendee should be able to:

1. Identify your personal sources of stress.
2. Compare different coping mechanisms for managing stress.
3. Identify alternative ways for breaking the stress cycle.

*Presenter(s): Rosa Thomas, MPH (University of Tennessee)*

**SA134. Developing Systemic Campus-wide Models for Risk Reduction and Crisis Management**

CME: 1.5 CH: 1.5 CECH: 1.5 PsyCE: 1.5 NBCC: 1.5 SW: 1.5

The attendee should be able to:

1. Describe the systemic model.
2. Contrast the systemic model with more traditional models.
3. Identify sequelae of implementation of the systemic model.

*Presenter(s): Andrew Berger, PhD, Shane Owens, PhD, Jill Bandura, PhD, and Christopher Browne, PhD (Farmingdale State College)*

**SA140. The Chief Health Officer**

CME: 1.5 CH: 1.5 CECH: 1.5

The attendee should be able to:

1. Describe the typical responsibilities of a chief health officer.
2. Describe several models of a chief health officer.
3. List appropriate roles and projects of a chief health officer.
4. Discuss the components necessary for a chief health officer to be successful.

*Presenter(s): Sarah Van Orman, MD (University of Wisconsin); Robert Winfield, MD (University of Michigan)*

*Schedule subject to change without notice.*

Visit [www.acha.org/AnnualMeeting10](http://www.acha.org/AnnualMeeting10) for the latest programming and event updates and refer to the **FINAL PROGRAM** available onsite.

## SATURDAY GENERAL SESSIONS

8:00 AM - 9:30 AM (CONT.)

### SA174. Identifying, Treating, and Providing Aftercare for Healthcare Students with Substance Abuse

CME: 1.5 CH: 1.5 CECH: 1.5 PsyCE: 1.5 NBCC: 1.5 SW: 1.5

The attendee should be able to:

1. Define an organizational structure which will develop student trust that the university wants to help addicted students.
2. Describe how peer assistance and alcohol treatment programs can aid in monitoring and supporting students in substance abuse treatment and aftercare programs.
3. Identify the components that make this program successful.
4. Discuss training of faculty, staff and students to provide education and support for program.

Presenter(s): George Downs, PharmD, William Cunningham, PhD, and Paul Furtaw, PsyD (University of the Sciences in Philadelphia); Kathie Simpson, RN (SARPH- Pennsylvania Peer Assistance Program); Kevin Knipe, MSW, LSW (Department of State Bureau of Professional and Occupational Affairs)

**EARLY BIRD REGISTRATION DEADLINE IS APRIL 9.** Save money off your registration fees by registering prior to this date.

### SA193. Hot Topics: Clinical Medicine

CME: 1.5 CH: 1.5

The attendee should be able to:

1. List several challenging clinical scenarios facing college health professionals.
2. Describe sources of up-to-date, evidence-based information for managing challenging clinical conditions.
3. Describe strategies on other campuses for managing challenging clinical scenarios.
4. Describe current funding challenges to providing clinical care.

Presenter(s): Samuel Seward, Jr., MD (Columbia University)

### SA220. Healthy Campus 2020: Focus on Determinants of Health and Evidence-Based Actions

CME: 1.5 CH: 1.5 CECH: 1.5 PsyCE: 1.5 NBCC: 1.5 SW: 1.5

The attendee should be able to:

1. Explain determinants of health and action model.
2. Define evidence-based public health.
3. Describe how to use the Healthy People 2020 online database of evidence-based actions and strategies.

Presenter(s): Jim Grizzell, MBA, MA (California State Polytechnic University, Pomona); Michelle Burcin, PhD, MPH, CHES (University of South Carolina); Cynthia Burwell, EdD, CHES (Norfolk State University)

### SA242. Cops and College Health: Using an Incident Command Structure to Provide H1N1 Response

CME: 1.5 CH: 1.5 CECH: 1.5 PsyCE: 1.5 NBCC: 1.5 SW: 1.5

The attendee should be able to:

1. Define the key concepts of Incident Command System Structure.
2. Explain the primary functions of a point of distribution (POD).
3. Discuss roles and requirements needed to develop a successful POD.
4. Describe the design and layout of a POD.

Presenter(s): Donna Barry, RN, MSN, APN, FN-CSA, and Paul Cell (Montclair State University)

10:00 AM - 12:00 PM

### SA012. Presidential Session: Communicating Science to the Public

CME: 2.0 CH: 2.0 CECH: 2.0 PsyCE: 2.0 NBCC: 2.0 SW: 2.0

The attendee should be able to:

1. Explain the various sources of health and science information available in the public domain.
2. Identify strategies for disseminating accurate health and scientific information to the public.
3. Describe examples of accurate and inaccurate information about vaccines and autism and the recent H1N1 pandemic in the U.S.

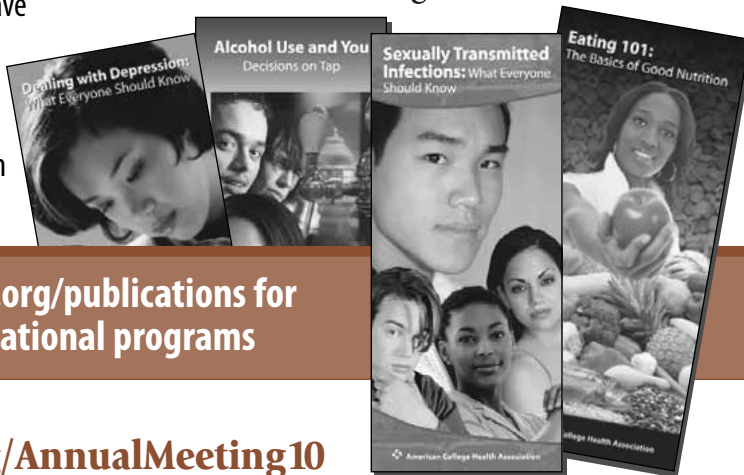
Presenter(s): Paul Offit, MD (University of Pennsylvania School of Medicine)

## Not an ACHA Member?

Join ACHA as an institutional or individual member and save up to 30% on our series of health information brochures. ACHA understands young adults' need for easy-to-read information presented in a nonjudgmental manner. Visit [www.acha.org/Membership/Membership\\_Categories.cfm](http://www.acha.org/Membership/Membership_Categories.cfm) for more information on membership benefits.



American College Health Association



Visit ACHA's online store at [www.acha.org/publications](http://www.acha.org/publications) for brochures to supplement your educational programs

# TB Screening Just Got Easier

**oxford.**  
DIAGNOSTIC LABORATORIES™

## National TB Testing Services

Offering the new generation of TB testing, the **T-SPOT®.TB** test — the blood test designed to deliver highly accurate results.

### Simple 3-Step Process



#### Collect Blood Specimen

- Uses standard collection tubes  
— No special collection tubes required
- No phlebotomy training required



#### Send the Blood Specimen(s)

- Blood specimens accepted Monday through Saturday
- Packaging and shipping materials provided by Oxford Diagnostic Laboratories



#### Report the Test Results

- Test results will be reported within 36-48 hours following collection of the specimen(s)
- Quantitative and qualitative results reported

### Get Started Today

Contact Client Services at **1-877-59 TBLAB** (1-877-598-2522)

**Accurate Simple Convenient**

[www.tbtestingservices.com](http://www.tbtestingservices.com)





# Point and Click Solutions

Specialized Systems for Student Health and Counseling

## Integrated Scheduling, Billing, Electronic Health Record and Patient Web Portal

### The Leading College Health Vendor

- Selected by the best schools in the country
- Over 130 University Sites and over 7,500 Users
- More fully deployed College Health EHR sites and users than any other vendor
- Supports Separate Protected Charts for Counseling, Disability Services and Athletic Trainers
- Scalable from 6 user sites to 450 user sites



For more information or a demonstration  
visit [www.pointnclick.com](http://www.pointnclick.com)

Point and Click Solutions, Inc.

6 Lincoln Knoll Lane, Suite 101, Burlington, MA 01803

Tel: (781) 272-9800 Fax: (781) 272-9811



Photo by Anne C. Kristensen courtesy of the PCVB

NONPROFIT  
ORGANIZATION  
U.S. POSTAGE PAID  
SUBURBAN, MD  
PERMIT NO. 2295

Many firsts occurred in historic Philadelphia, making it the perfect place for the people of college health to come together and celebrate the past, present, and future of the field!

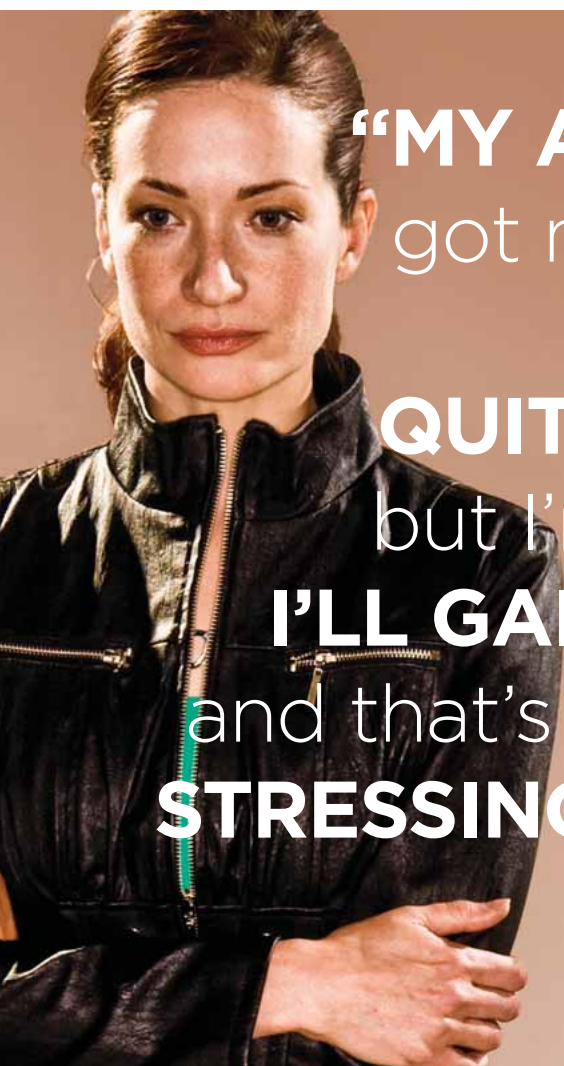
### Did you know?

The University of the Sciences in Philadelphia, originally known as the Philadelphia College of Pharmacy, is the first college of pharmacy in the United States and began in 1821 when 68 Philadelphia apothecaries met in Carpenters' Hall to establish standards and train students.

Carpenters' Hall also hosted the First Continental Congress in 1774 and was home to Franklin's Library Company, The American Philosophical Society, and the First and Second Banks of the United States. Carpenters' Hall is a part of Independence National Historical Park. Visit [www.nps.gov/inde/visiting.htm](http://www.nps.gov/inde/visiting.htm) for more information.

 American College Health Association  
891 Elkridge Landing Road, Suite 100  
Linthicum, MD 21090

[www.acha.org/AnnualMeeting10](http://www.acha.org/AnnualMeeting10)



“MY ALLERGIES  
got me thinking  
**I SHOULD  
QUIT SMOKING**  
but I'm paranoid  
**I'LL GAIN WEIGHT**  
and that's completely  
**STRESSING ME OUT!**”

You have student health issues.  
We have student health answers.  
Let us put a plan together just for  
you to cover what matters most.

Visit us at **booth 607** or on the  
web at [nationwide.com/college](http://nationwide.com/college)  
to learn more.



**Nationwide®**  
On Your Side

Nationwide Specialty Health®